



Rectory Lane, Ashted KT21 2BA

**V&H**  
HOMES  
Your local property specialist

## Rectory Lane Ashted KT21 2BA

*This attractive and characterful three bedroom semi-detached period cottage located in a sought-after road ideally located within a stone's throw of Ashted village, local shops and schools.*

Spacious Victorian Home

Semi Detached

Two Reception Rooms

Three Bedrooms

Kitchen Diner

Downstairs WC

Private Garden

Central Ashted Village Location

Off Street Parking

EPC Rating E

Rectory Lane is a highly sought-after road, moments from the village high street. The house is 0.8 miles from Ashted station, which offers links to London Waterloo and Victoria in approximately 40 minutes.





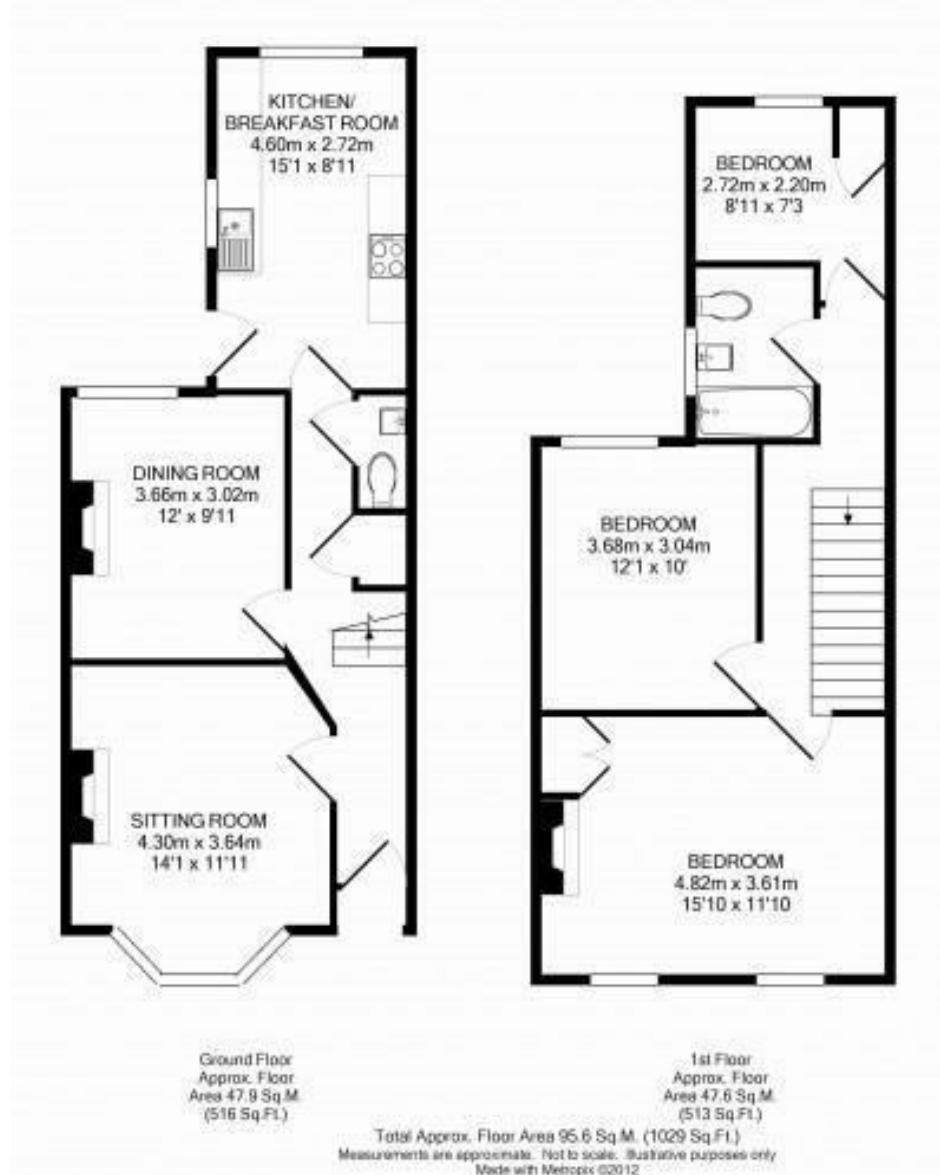
On entering the house, a hall leads to the living room with charming bay window and a cast iron fireplace. Downstairs also offers a well proportioned dining room with a feature fireplace, WC and a spacious kitchen diner benefiting from ample unit space and built-in appliances with a dining area looking out into the garden.

To the first floor, there are two double bedrooms and one single, as well as a three piece family bathroom.

Externally to the front, the property benefits from off street parking and to the rear there is a good size garden mainly laid to lawn with a paved patio area ideal for outside dining.

Viewings of this characterful home are highly recommended.





**V&H Homes**

01372 221 678

sales@vhhomes.co.uk

www.vhhomes.co.uk

