



Harriotts Close, Ashted KT21 2QL

**V&H**  
HOMES

Your local property specialist



## Harriotts Close Ashted KT21 2QL

*A substantial and versatile five-bedroom family home in a prime cul-de-sac location. Offered to the market with no onward chain.*

*Tucked away at the top of a peaceful cul-de-sac in the highly sought-after Lanes area of Ashted, this generously proportioned five-bedroom, three-bathroom detached house offers over 2,300 sq. ft. of flexible living space – ideal for modern family life.*

Substantial & Versatile Family Home

Five Double Bedrooms

Three Bathrooms

Four Reception Rooms

Annex

Over 2,300 Sq. Ft.

Large Driveway

South Facing Landscaped Garden

No Onward Chain

EPC Rating: D







This impressive property welcomes you with a large driveway providing ample off-street parking and is complemented by a beautifully landscaped south facing rear garden with multiple seating and entertaining areas.

The ground floor flows effortlessly with four reception rooms, including a stylish open-plan kitchen/dining area with vaulted ceilings and a view out to the garden, perfect for everyday family living and for entertaining. A large living room, a bright family room, and a utility area further enhance the practicality of the ground floor accommodation.

In addition, there's a versatile suite with its own entrance that can seamlessly function as part of the main house or as a private space for guests, working from home, or multigenerational living – offering a bedroom, reception room, kitchen, and bathroom.

Upstairs, the main house continues to impress with four double bedrooms, including a generous principal suite with en suite, and a well-appointed family bathroom.

Ideally positioned within easy reach of highly regarded local schools – both state and independent – as well as Ashted station for convenient London access, this is a rare opportunity to secure a truly flexible family home in a coveted and tranquil setting.

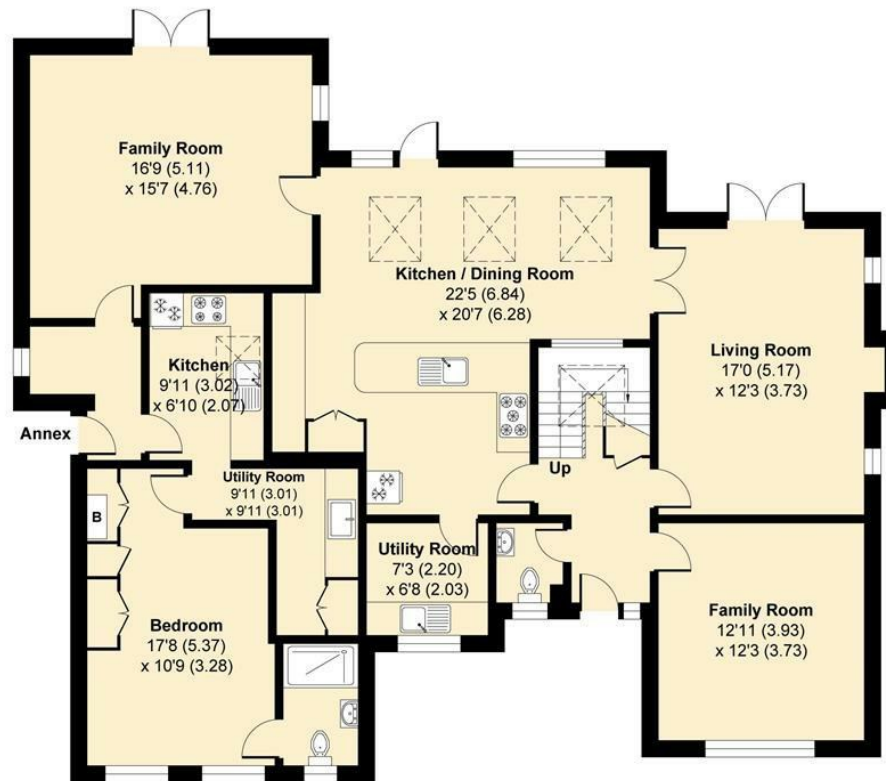




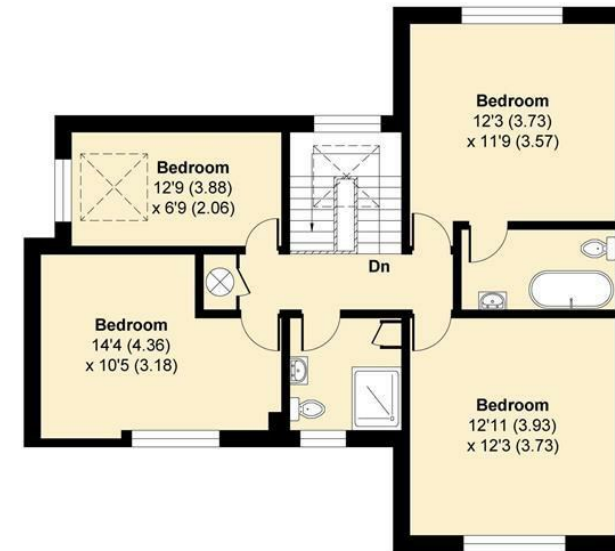
# Harriotts Close, Ashted

Approximate Gross Internal Area = 216.20 sq m / 2327.15 sq ft

For identification only - Not to scale



GROUND FLOOR



FIRST FLOOR



Floor plan produced in accordance with RICS Property Measurement 2nd Edition.  
Incorporating International Property Measurement Standards (IPMS2 Residential).  
Produced for V&H Homes.

**V&H Homes**

01372 221 678

[sales@vhhomes.co.uk](mailto:sales@vhhomes.co.uk)

[www.vhhomes.co.uk](http://www.vhhomes.co.uk)

rightmove

Zoopla

PrimeLocation.com



hometrack

**V&H**  
HOMES

Your local property specialist