



High Road, Chipstead CR5 3QQ

V&H
HOMES
Your local property specialist

High Road, Chipstead

This immaculately presented and substantial residence offers over 4,300 sq. ft. of contemporary and open plan accommodation. Situated in a peaceful countryside location on a private and expansive plot. The house provides six double bedrooms, three bathrooms and five versatile reception rooms.

Immaculately Presented

Six Double Bedrooms

Three Bathrooms

Five Reception Rooms

Double Garage

Expansive West Facing Garden

Over 4,300 Sq. Ft.

Characterful & Contemporary

Countryside Location

Close to Multiple Amenities



The property is set back on a charming country road that runs through Chipstead Village. There is an abundance of open countryside in the vicinity in addition to Chipstead Rugby Club, Golf Club and various other sporting facilities. Chipstead Theatre and the popular White Hart Pub / Restaurant are also within walking distance. Chipstead Station provides access to London and local village shops are nearby with further facilities available at Banstead or Coulsdon.





This attractive home is approached via a large driveway leading to a double garage with loft above. The expansive and secluded west facing rear garden provides a manicured lawn and a patio that runs the width of the house. There is an outdoor kitchen / BBQ area and an orchard to the back of the main garden. In addition to this, the garden provides lights around the perimeter and outdoor plug sockets.

The property has undergone extensive renovations and extensions by the current owners and is presented to a high specification and characterful finish.

A large entrance hall leads to the snug with central wood burning fireplace and outstanding open plan kitchen / breakfast room with bifold doors to the garden. The luxurious Tom Howley kitchen benefits from electric velux windows, integrated appliances, ample unit space and a central island. Doors from the snug lead to the well proportioned formal dining room. The 31'2 x 21' living room provides ample space for two seating areas, characterful beams and a fire place. To the rear of the house is the substantial open plan games room with space for a bar, billiards table and family seating area. The games room also provides bifold doors to the garden in addition to access to the large gym room. The ground floor of this fantastic home also provides a utility room and a cloakroom.

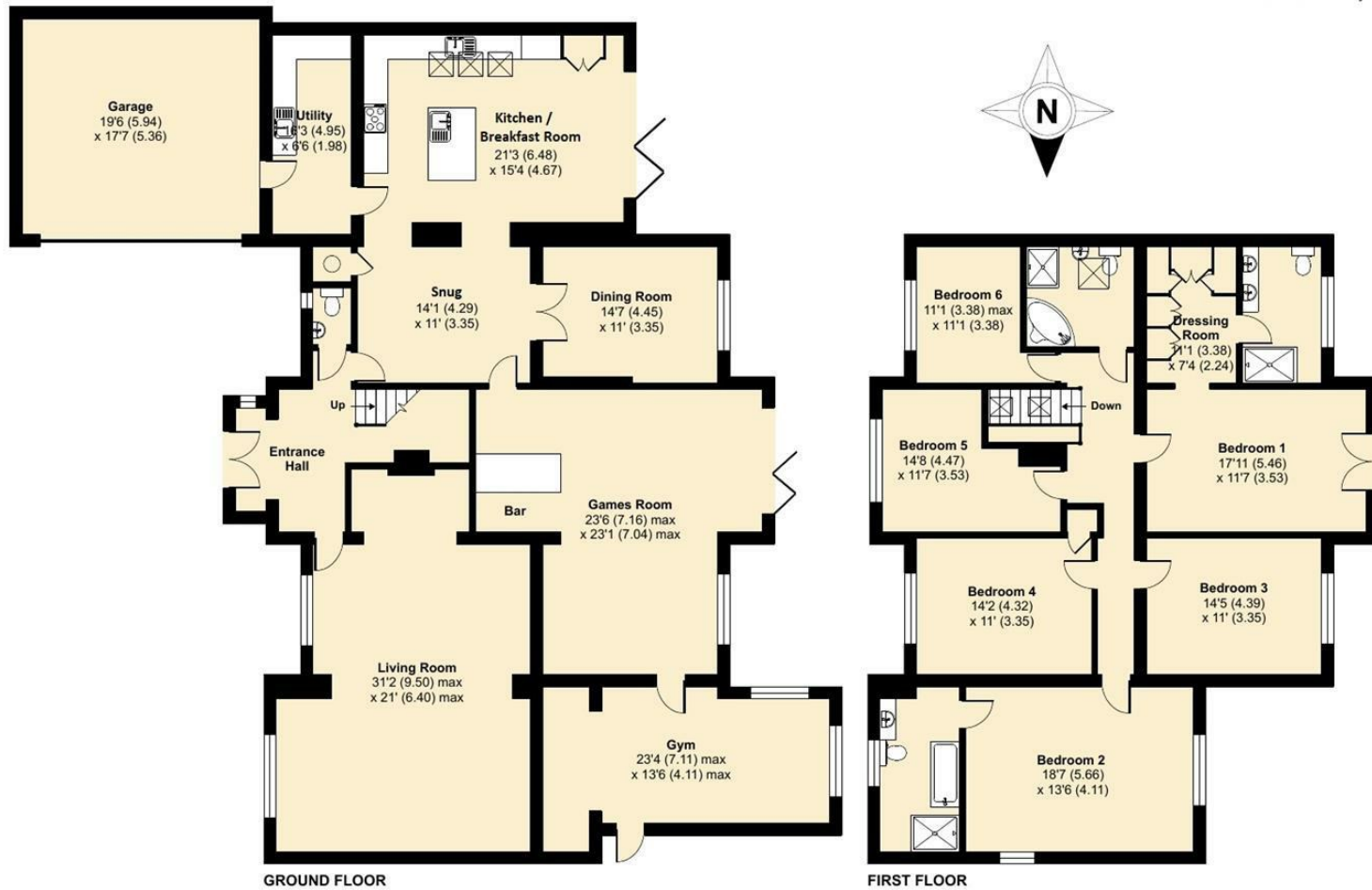
The first floor landing leads to six spacious and bright double bedrooms, of which the master suite benefits from a dressing room and en-suite wet room, and the second bedroom provides a four piece en-suite bathroom. There is also a four piece family bathroom and access to the main loft.



The Pippins, High Road, Chipstead, Coulsdon, CR5

Approximate Area = 4314 sq ft / 400.7 sq m (includes garage)

For identification only - Not to scale



Floor plan produced in accordance with RICS Property Measurement Standards incorporating International Property Measurement Standards (IPMS2 Residential). © ncheom 2022. Produced for V&H Homes. REF: 858106.



V&H Homes

01372 221 678

sales@vhomes.co.uk

www.vhomes.co.uk

