



Cressall Close, Leatherhead KT22 7DZ

V&H
HOMES

Your local property specialist

Cressall Close Leatherhead KT22 7DZ

A spacious top floor two bedroom apartment with communal grounds, plenty of on street parking and a personal storage shed. Situated in a quiet, sought after area of Leatherhead within walking distance to Leatherhead Town Centre and mainline station.

Top Floor (2nd)

Two Double Bedrooms

Fitted Kitchen

Tiled Bathroom

Large Lounge

Communal Grounds

On Street Parking

Personal Brick Built Store

No Chain

EPC Rating D





The communal entrance leads via stairs to the 2nd (top) floor.

The apartment has two double bedrooms, a well fitted kitchen with space for appliances, a tiled bathroom and a spacious lounge/dining room with lots of natural light coming from the large double glazed windows throughout the property.

There is a large, walk in eaves storage cupboard with power that can be used for storage, added appliances etc and extends to the full width of the apartment.

Externally are shared communal grounds and a personal brick built storage shed.

The apartment is offered for sale with no onward chain.





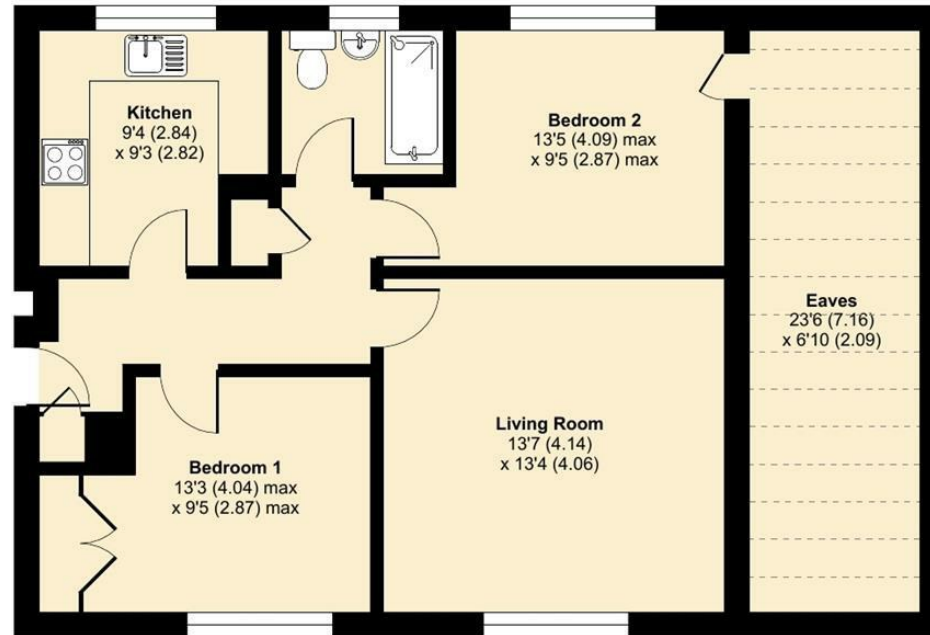
Cressall Close, Leatherhead, KT22

Approximate Area = 635 sq ft / 59 sq m

Limited Use Area(s) = 150 sq ft / 14 sq m

Total = 785 sq ft / 73 sq m

For identification only - Not to scale



SECOND FLOOR



Floor plan produced in accordance with RICS Property Measurement 2nd Edition, Incorporating International Property Measurement Standards (IPMS2 Residential). © n/checom 2024. Produced for V&H Homes. REF: 1309837



V&H Homes

01372 221 678

sales@vhhomes.co.uk

www.vhhomes.co.uk



Your local property specialist