



Ashted Woods Road, Ashted KT21 2EQ

**V&H**  
HOMES

Your local property specialist



## Ashtead Woods Road, KT21 2EQ

Premier Ashtead Location

Approximately 5,000 Sq. Ft

Newly Remodelled & Extensively Extended

Statement Family Home

Luxury Open-plan Living

Five Spacious Bedrooms

Five Stylish Bathrooms

High-end Bespoke Kitchen

Carriage Driveway

Highly Regarded Local Developer

COMING SOON! Set in one of Ashtead's most prestigious roads this newly remodelled and extensively extended, dominant five-bedroom detached residence is being delivered by a highly regarded local developer known for quality and craftsmanship. With approximately 5,000 sq. ft of exceptional living space, Shardeloes is a statement home offering a blend of timeless elegance and contemporary modern living.

Internally, the property features an impressive 43ft x 36ft open-plan kitchen, dining and reception room with sliding doors opening onto a beautifully landscaped rear garden. The kitchen with an island unit will be fitted to a high specification, complemented by a separate utility room and a pantry. The ground floor is further enhanced by a stylish living room, a study/gym, a snug, a family room, and an impressive entrance hall.

The first floor offers five generous bedrooms, including a superb master suite with its own dressing area and en-suite bathroom. Three further bedrooms feature en-suites, and a large family bathroom serves the remaining room. The layout has been meticulously designed for family functionality with premium finishes throughout.

Externally, Shardeloes boasts outstanding curb appeal, with a sweeping driveway. The large rear garden is mainly laid to lawn and features a spacious patio area, perfect for summer dining.

This is a rare opportunity to secure a landmark property on a premier Ashtead road - early reservation offers the chance to personalise some final finishes.



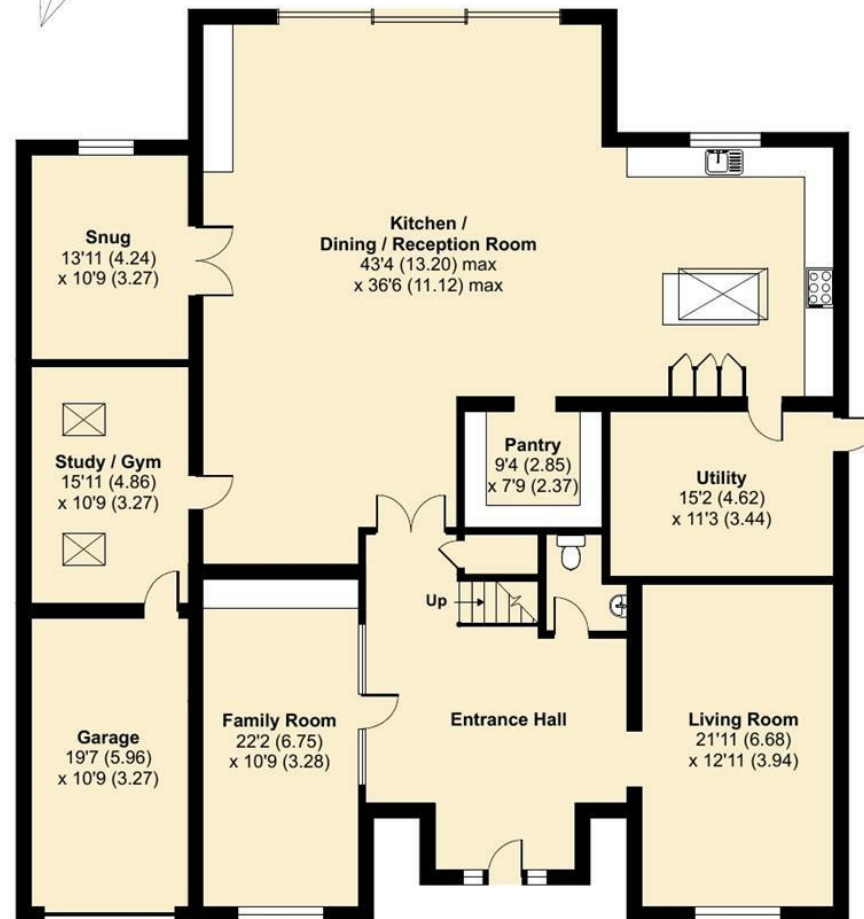
# Ashted Woods Road, Ashted, KT21

Approximate Area = 4678 sq ft / 434.5 sq m

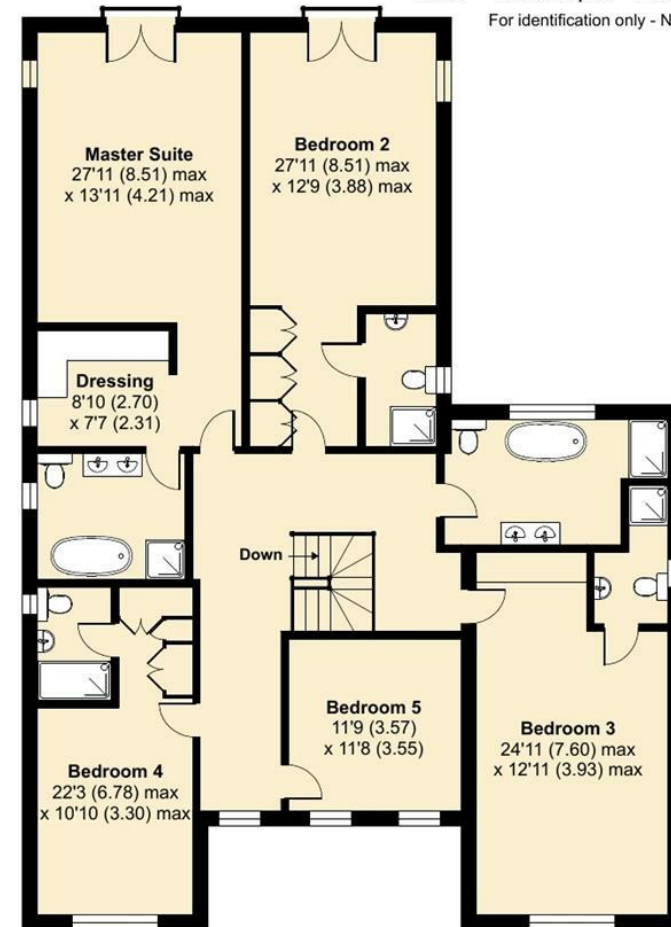
Garage = 208 sq ft / 19.3 sq m

Total = 4886 sq ft / 453.9 sq m

For identification only - Not to scale



GROUND FLOOR



FIRST FLOOR



Floor plan produced in accordance with RICS Property Measurement 2nd Edition, Incorporating International Property Measurement Standards (IPMS2 Residential). © ntechcom 2024. Produced for V&H Homes. REF: 1283672

**V&H Homes**

01372 221 678

[sales@vhhomes.co.uk](mailto:sales@vhhomes.co.uk)

[www.vhhomes.co.uk](http://www.vhhomes.co.uk)

rightmove

Zoopla

PrimeLocation.com

The Property Ombudsman

hometrack

**V&H**  
HOMES

Your local property specialist