



Mount Close, Fetcham KT22 9EF

V&H
HOMES
Your local property specialist

Mount Close Fetcham KT22 9EF

This substantial detached house situated in a private cul-de-sac is comprised of five double bedrooms, a large family bathroom, en-suite shower room, large Kitchen/breakfast room, downstairs cloakroom and separate utility room, dining room overlooking the garden, a study and a lounge with feature fire place.

Externally there is a double garage with electric door, off street parking for several cars and a large mature garden with patio area.

Detached

Five Double Bedrooms

Three Reception Rooms

End Of Chain

Study

Private Road

Double Garage

En-suite Shower Room

Council Band G

E.P.C Rating D





Fetcham village boasts a superb variety of shops and restaurants, well located for Cobham and Leatherhead with its mainline train station for links to London Waterloo, Victoria and London Bridge.

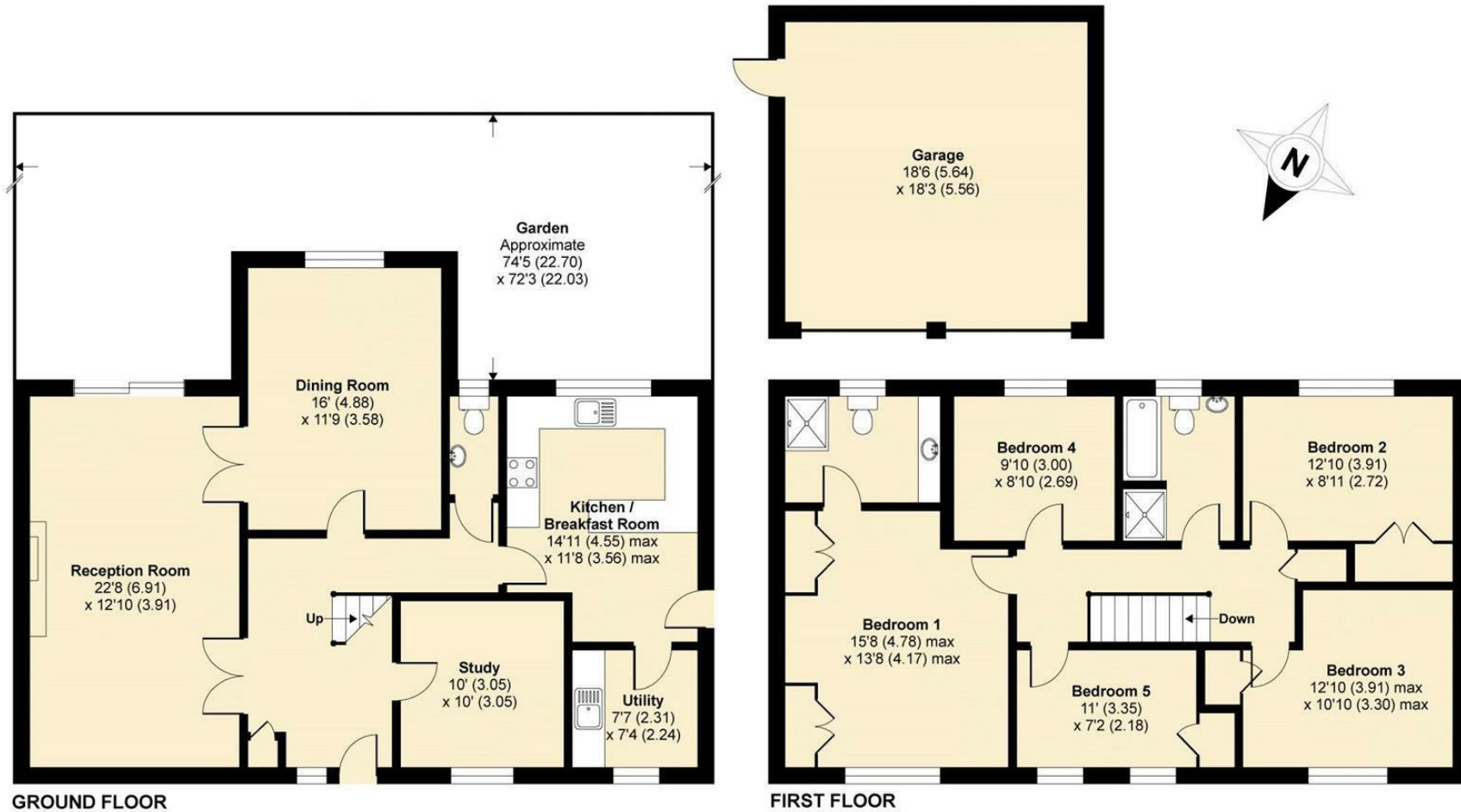
There are also a number of State and Private schools in the area including Fetcham Infant School, Oakfield Junior School, Downsend School, St Johns of Leatherhead and Parkside School in Cobham.

Please note these photos were taken prior to the current tenants moving in.



Mount Close, Fetcham, Leatherhead, KT22

APPROX. GROSS INTERNAL FLOOR AREA 2282 SQ FT 211.9 SQ METRES (INCLUDES GARAGE)



Whilst every attempt has been made to ensure the accuracy of the floor plan contained here, measurements of doors, windows and rooms are approximate and no responsibility is taken for any error, omission or misstatement. These plans are for representation purposes only as defined by RICS Code of Measuring Practice and should be used as such by any prospective purchaser. Specifically no guarantee is given on the total square footage of the property if quoted on this plan. Any figure given is for initial guidance only and should not be relied on as a basis of valuation.

Copyright nichecom.co.uk 2016 Produced for V&H Homes REF : 106078

V&H Homes

01372 221 678

sales@vhomes.co.uk

www.vhomes.co.uk

