



The Oaks Square, Epsom KT19 8AR

V&H
&
HOMES

Your local property specialist

The Oaks Square Epsom KT19 8AR

A spacious two double bedroom penthouse apartment located in the heart of Epsom Town Centre. Offered to the market with no onward chain.

FTB OR INVESTMENT

Large Kitchen/Reception

Balcony Overlooking Oaks Square

200m to Epsom Train Station

Two Double Bedrooms

Bathroom & Ensuite

Integrated Appliances

Designated Parking Space

Council Tax Band D

EPC Rating C

Located in the heart of Epsom town centre and just 200 metres from Epsom train station.



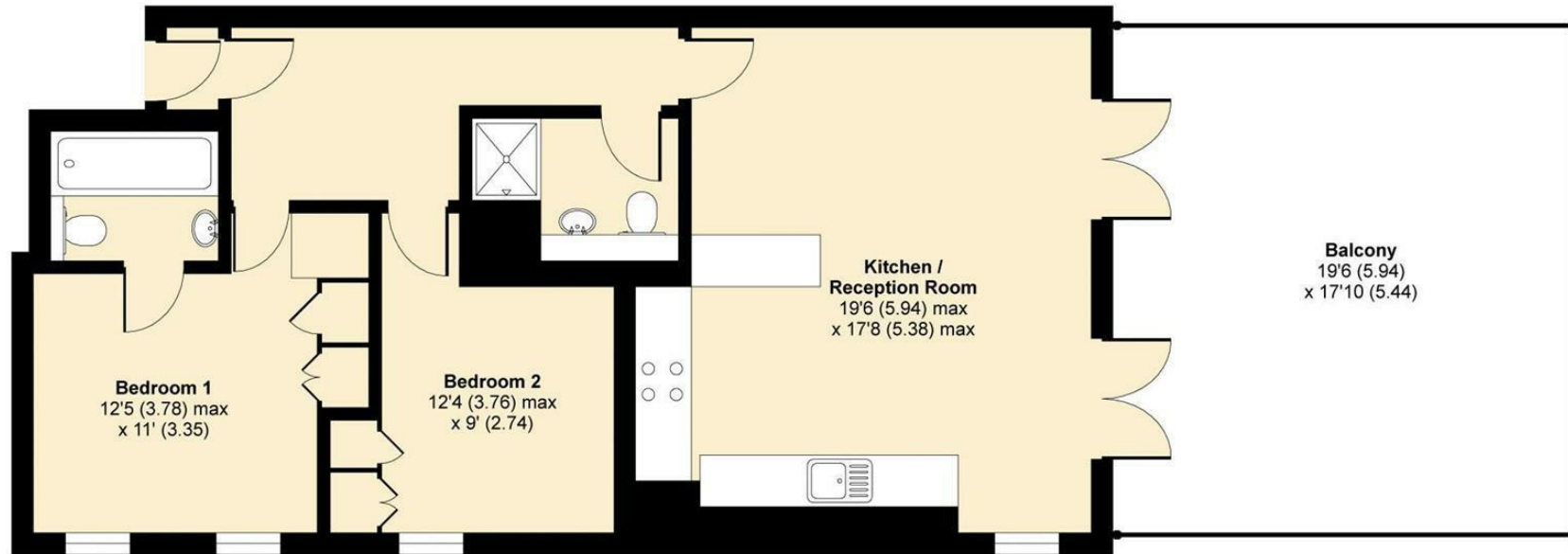


The property benefits from an open plan kitchen/living room, large roof terrace, two double bedrooms with built in wardrobes, master bedroom with en-suite bathroom, family bathroom and underground parking.



The Oaks Square, Epsom, KT19

APPROX. GROSS INTERNAL FLOOR AREA 758 SQ FT 70.4 SQ METRES



FOURTH FLOOR

Whilst every attempt has been made to ensure the accuracy of the floor plan contained here, measurements of doors, windows and rooms are approximate and no responsibility is taken for any error, omission or misstatement. These plans are for representation purposes only as defined by RICS Code of Measuring Practice and should be used as such by any prospective purchaser. Specifically no guarantee is given on the total square footage of the property if quoted on this plan. Any figure given is for initial guidance only and should not be relied on as a basis of valuation.

Copyright nichecom.co.uk 2016 Produced for V&H Homes REF : 119587

V&H Homes

01372 221 678

sales@vhomes.co.uk

www.vhomes.co.uk

rightmove

Zoopla

PrimeLocation.com

The Property Ombudsman

hometrack

V&H HOMES

Your local property specialist