



Hawks Hill Close, Leatherhead KT22 9DL

V&H
HOMES

Your local property specialist

Hawks Hill Close Leatherhead KT22 9DL

This rarely available and characterful four bedroom detached family home located in a highly sought after cul-de-sac, just half a mile from Leatherhead station. This outstanding detached house with a carriage driveway offers spacious and bright accommodation throughout alongside a large and mature garden.

Rarely Available

Four Double Bedrooms

Three Reception Rooms

Carriage Driveway

Vaulted Breakfast Room

Desirable Cul-de-sac

Private Road

Mature Garden

Garage

0.5 Miles The From Station

The house is located just 0.5 miles from Leatherhead station, which offers trains to London Waterloo and Victoria in approximately 40 minutes





On entering the house, an entrance hall leads to a spacious dual aspect living room with an attractive fireplace leading through to a study. The modern kitchen with ample cupboard space and integrated appliances leads through to a bright vaulted breakfast room overlooking the garden. In addition, the downstairs offers a spacious dining room with a bay window, a utility room and cloakroom.

On the first floor there is a family bathroom and four double bedrooms with the master bedroom enjoying a dressing room and en-suite shower room.

Externally, to the front, the house is approached by a carriage driveway with a gated entrance, which provides ample driveway parking and an integral garage. The mature private rear garden is mainly laid to lawn and secluded with mature trees and hedging. The garden benefits from a patio, perfect for al-fresco dining in the summer months and a summer house with power.



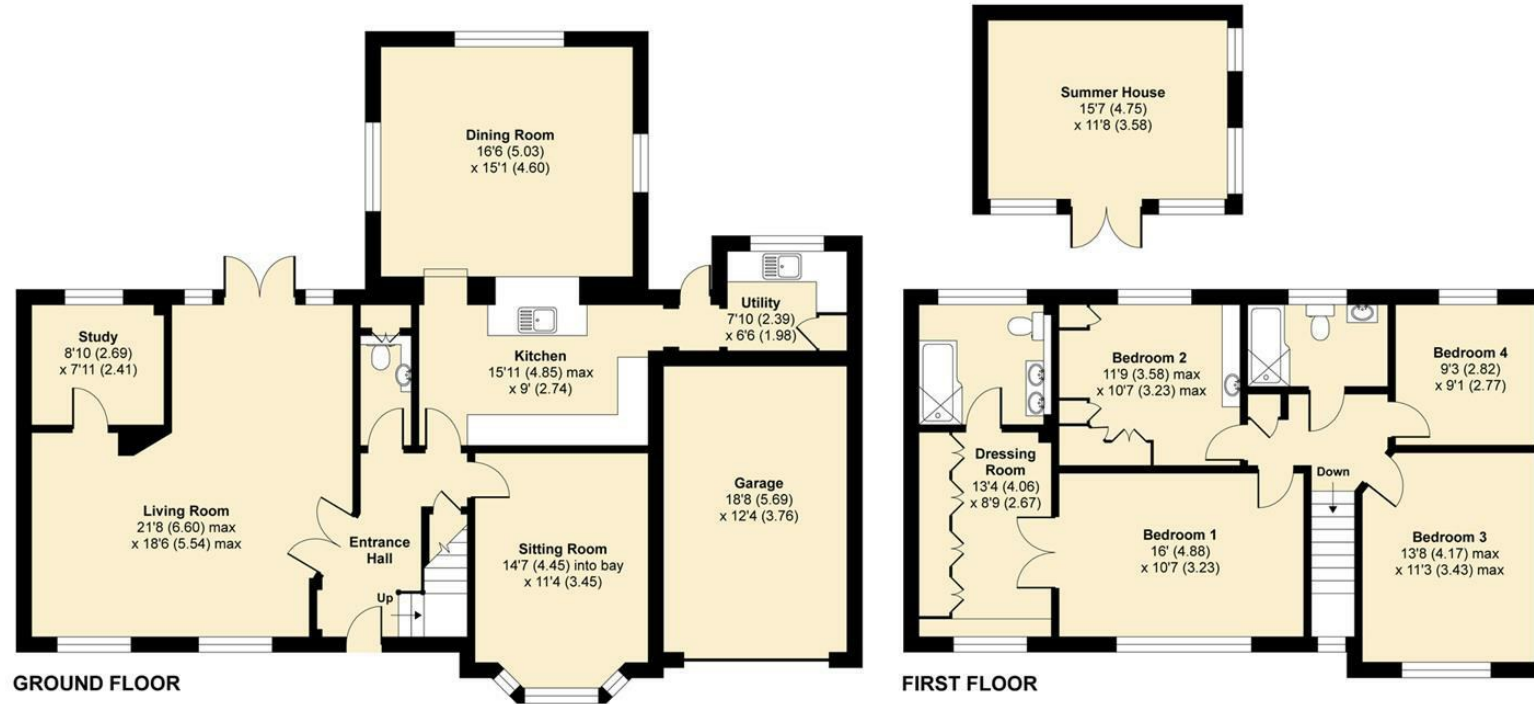
Hawks Hill Close, Fetcham, Leatherhead, KT22

Approximate Area = 2364 sq ft / 219.6 sq m (includes garage)

Outbuilding = 182 sq ft / 16.9 sq m

Total = 2546 sq ft / 236.5 sq m

For identification only - Not to scale



Floor plan produced in accordance with RICS Property Measurement Standards incorporating International Property Measurement Standards (IPMS2 Residential). ©n/checom 2021. Produced for V&H Homes. REF: 773075



V&H Homes

01372 221 678

sales@vhomes.co.uk

www.vhomes.co.uk

