



Woodlands Way, Ashted KT21 1LH

V&H
HOMES

Your local property specialist

Woodlands Way Ashted KT21 1LH

A beautifully presented double fronted four bedroom detached home situated in a quiet, leafy road on the south side of Ashted, offering easy access to Ashted Village, station, City of London Freeman's School, Rosebery Girls and The Greville Primary Schools. With a contemporary style and a seamless flow of accommodation, this family home also has a south west facing garden complete with a garden office.

Detached Four Bedroom Home

Two Bath/Shower Rooms

Two Formal Reception Rooms

Open Plan Kitchen/Dining/Family Room

Utility Room

South West Facing Garden

Snug/Gym/Boot Room

Garden Office

South Ashted Location

EPC Rating C





The ground floor accommodation comprises an open plan kitchen/dining/family room with patio doors to the garden, a cosy living room and a further formal reception room/dining room. Access from the family room leads to a versatile space currently used as a snug, gym with a shower room/wc and a fitted boot room with plenty of storage options. There is also a useful utility room off the kitchen.

Upstairs are four double bedrooms and a beautifully appointed bath/shower room.

The south west facing garden is mainly laid to lawn with a sun terrace and is privately screened with borders of hedges and bushes. There is a home office tucked away to the rear of the garden.

To the front of the property is an in-out driveway offering parking for two/three vehicles with a side access gate and door to the boot room and gym.



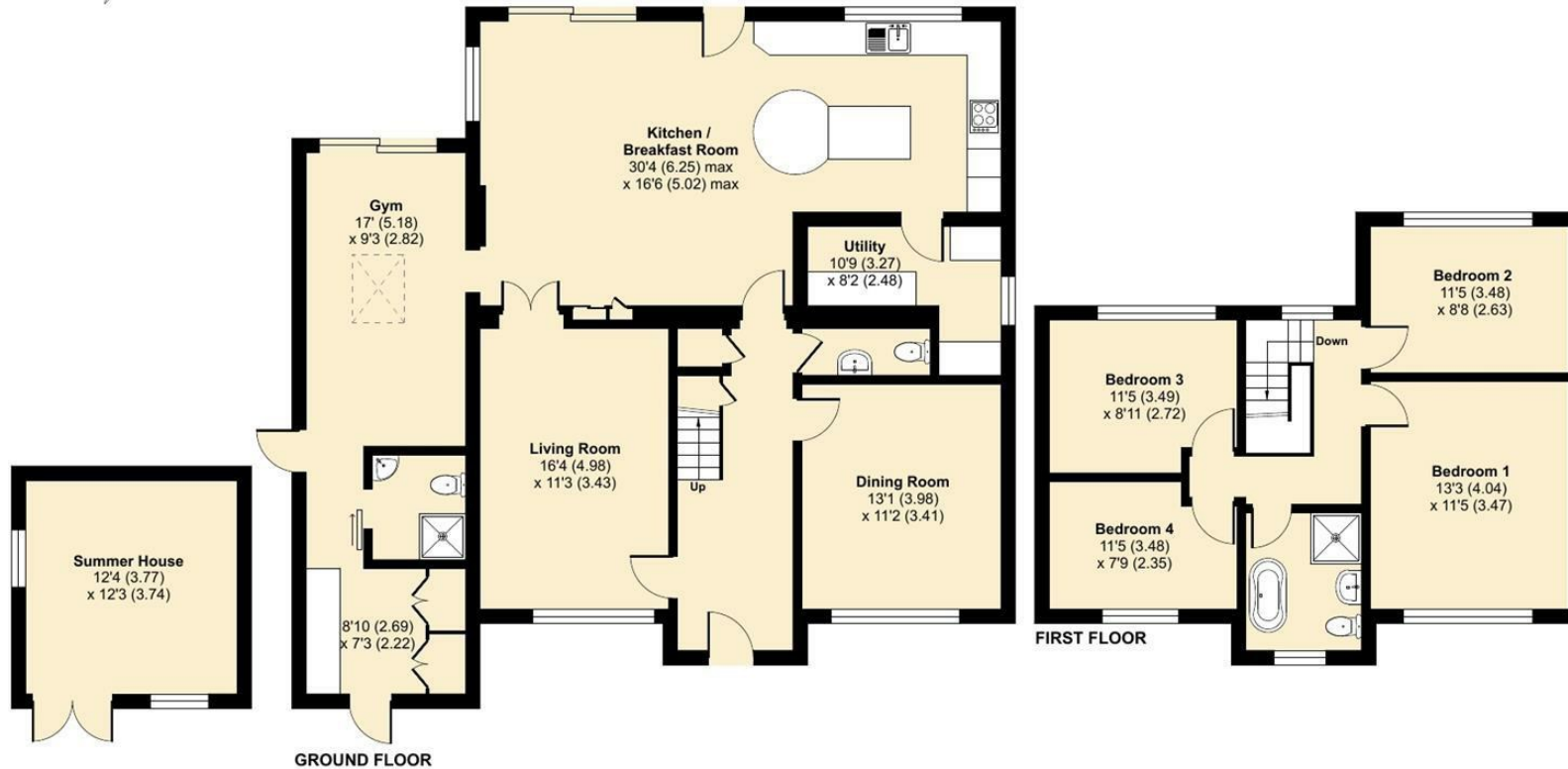
Woodlands Way, Ashted, KT21

Approximate Area = 1938 sq ft / 180 sq m

Garage = 152 sq ft / 14.1 sq m

Total = 2090 sq ft / 194.1 sq m

For identification only - Not to scale



Floor plan produced in accordance with RICS Property Measurement 2nd Edition, Incorporating International Property Measurement Standards (IPMS2 Residential). © n/checom 2024. Produced for V&H Homes. REF: 1312133



V&H Homes

01372 221 678

sales@vhhomes.co.uk

www.vhhomes.co.uk

rightmove

Zoopla

PrimeLocation.com



hometrack

V&H HOMES

Your local property specialist