



Read Road, Ashted KT21 2HX

V&H  
HOMES

Your local property specialist



## Read Road Ashted KT21 2HX

*An excellent opportunity to purchase a three bedroom semi-detached property with an ensuite shower room, a spacious ground floor bathroom, an open plan kitchen/dining room plus, REAR ACCESS TO A LARGE GARAGE. This delightful family home is situated in a quiet road within moments of Ashted Station and Barnett Wood Infants School.*

Three Bedrooms

Bathroom and Ensuite Shower

Open Plan Kitchen/Dining Room

Loft Room

South West Facing Garden

Garage & OSP

Central Ashted Location

Excellent School Catchment

No Chain

EPC E







An entrance porch leads to the bright lounge with feature fireplace, and the spacious kitchen/dining room which has fitted cupboards, space for appliances and double patio doors leading onto the rear garden. The ground floor bathroom has a four piece suite including bath and separate shower.

There are three generous bedrooms on the first floor, the master having a range of wardrobes and an en-suite shower room. There are further stairs leading to a useful loft room.

The rear garden has a seating area and is mainly laid to lawn with rear vehicle access to a large garage. Further off street parking is available to the front of the property.



# Read Road, Ashted, KT21

Approximate Area = 998 sq ft / 92.7 sq m

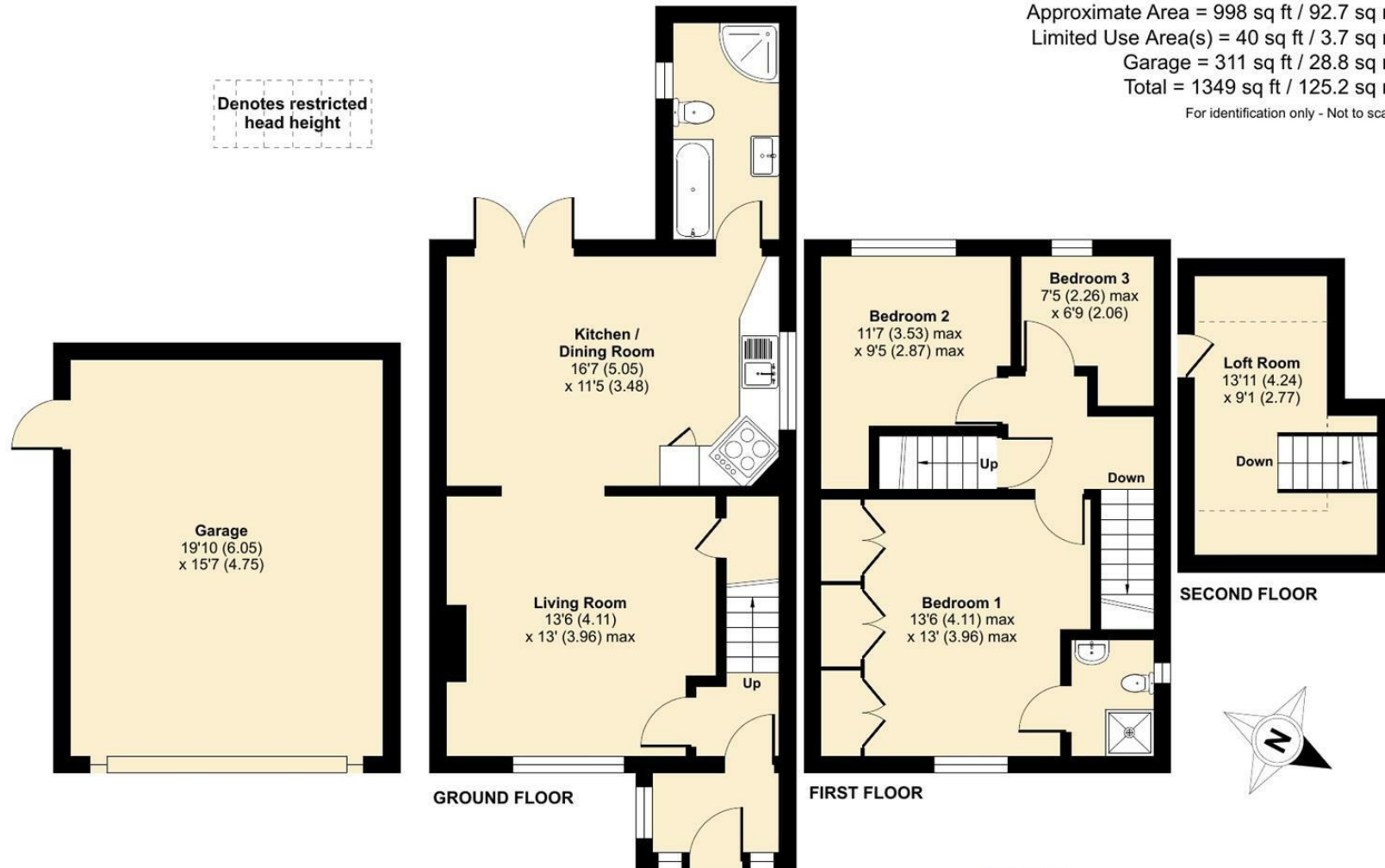
Limited Use Area(s) = 40 sq ft / 3.7 sq m

Garage = 311 sq ft / 28.8 sq m

Total = 1349 sq ft / 125.2 sq m

For identification only - Not to scale

Denotes restricted  
head height



Floor plan produced in accordance with RICS Property Measurement Standards incorporating International Property Measurement Standards (IPMS2 Residential). © nichecom 2024. Produced for V&H Homes. REF: 1129062



**V&H Homes**

01372 221 678

[sales@vhhomes.co.uk](mailto:sales@vhhomes.co.uk)

[www.vhhomes.co.uk](http://www.vhhomes.co.uk)

**rightmove**

**Zoopla**

**PrimeLocation.com**



**hometrack**

**V&H HOMES**

Your local property specialist