



Teazlewood Park, Leatherhead KT22 7JQ

V&H
HOMES

Your local property specialist

Teazlewood Park Leatherhead KT22 7JQ

An attractive, well presented contemporary three bedroom mid terrace house which has undergone a full refurbishment programme by the current owners.

Three Bedrooms

Open Plan Living

Well Presented

Modern Kitchen

Luxury Bathroom

Gas Central Heating

Double Glazing Throughout

30 ft Rear Garden

Driveway with Parking for Several Cars

EPC Rating C

A stunning family home close to local shops, amenities and sought after local schools.





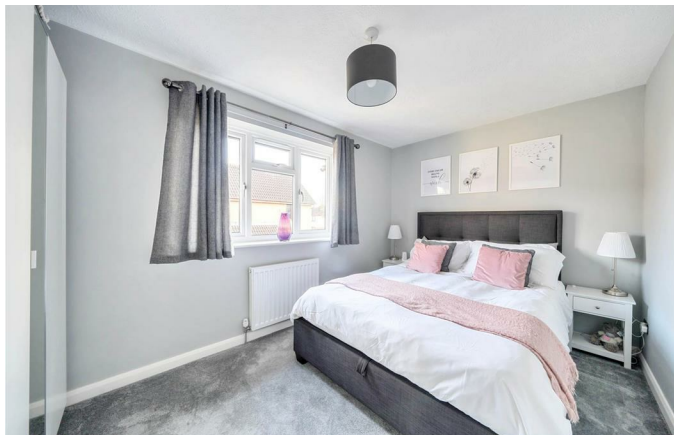
The ground floor of this excellent property is approached through an entrance porch with a laundry cupboard, leading into a bright open plan living/dining/kitchen area. The well equipped kitchen offers ample storage cupboards, a range of integrated appliances, a useful breakfast bar and doors opening out into the rear garden.

Upstairs offers three bedrooms and a modern family bathroom.

This property benefits from double glazing throughout and a new gas central heating system.

The back garden is low maintenance with a patio outside the kitchen door, plus an additional decking area and a rear access gate.

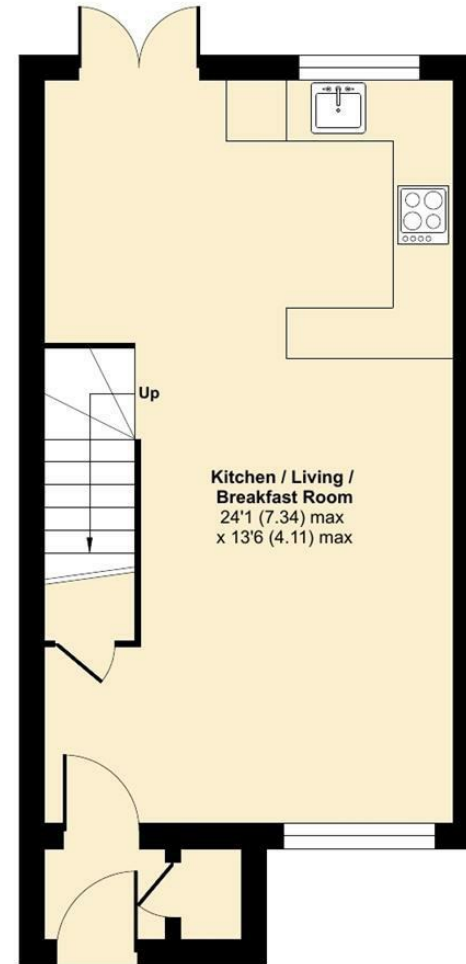
To the front there is ample parking for several cars.



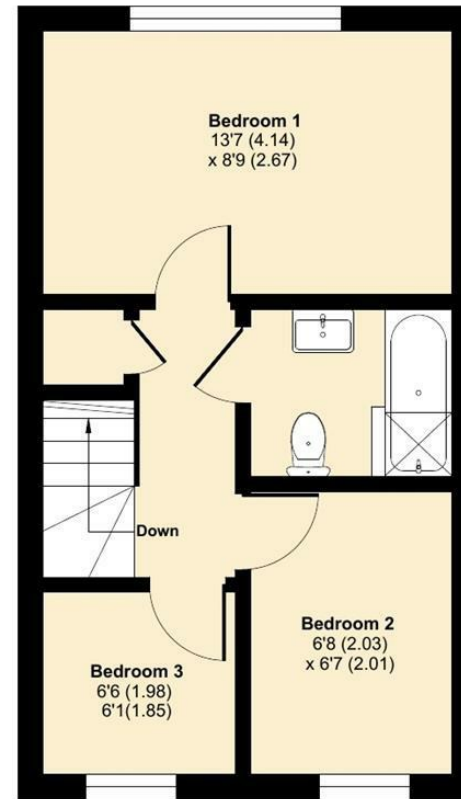
Teazlewood Park, Leatherhead, KT22

Approximate Area = 690 sq ft / 64.1 sq m

For identification only - Not to scale



GROUND FLOOR



FIRST FLOOR



Floor plan produced in accordance with RICS Property Measurement Standards incorporating International Property Measurement Standards (IPMS2 Residential). © nchecon 2024. Produced for V&H Homes. REF: 1076862



V&H Homes

01372 221 678

sales@vhomes.co.uk

www.vhhomes.co.uk



Your local property specialist