



The Street, Ashted KT21 2AH

V&H
HOMES

Your local property specialist

The Street

Ashtead KT21 2AH

A rare opportunity to acquire a charming two/three-bedroom cottage, located in the heart of Ashtead Village. This delightful property offers excellent potential to update and extend, with a south-facing walled garden, outbuilding, and off-street parking. Offered with no onward chain.

Period Cottage

Three Bedrooms

Off Street Parking

Private South Facing Garden

Central Village Location

Upstairs Bathroom

Opportunity to Modernise

EPC Rating: E





The cottage retains many period features, adding character to its well-proportioned layout. The ground floor comprises an entrance porch, a living room, and a formal dining room, all with period details. The extended kitchen includes a separate utility area and leads to a convenient downstairs cloakroom. At the rear, the sitting room overlooks the private garden.

On the first floor, you'll find two well-proportioned bedrooms, served by a light and bright bathroom with walk-in shower. The second floor provides a versatile third bedroom/study with eaves storage and views over the surrounding rooftops.

The south-facing rear garden is mainly laid to lawn, with high walls providing privacy. A flexible outbuilding offers the potential for use as a home office or additional storage. There are also patio areas at either end of the garden.

The frontage of the property offers off street parking.



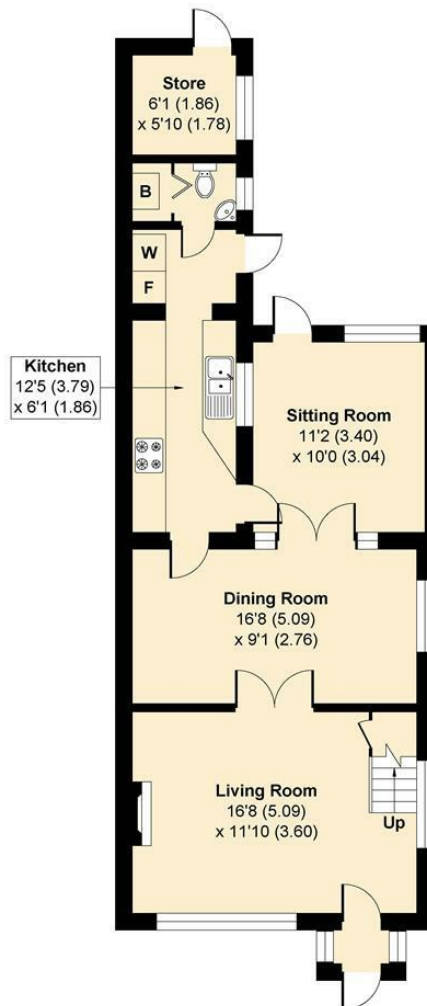
The Street

Approximate Gross Internal Area = 125.10 sq m / 1346.56 sq ft

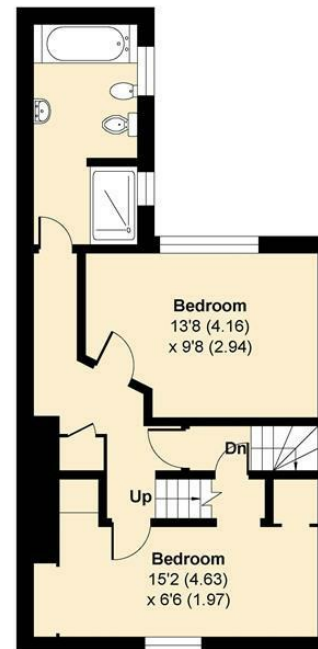
Store = 5.80 sq m / 62.43 sq ft

Total = 130.90 sq m / 1408.99 sq ft

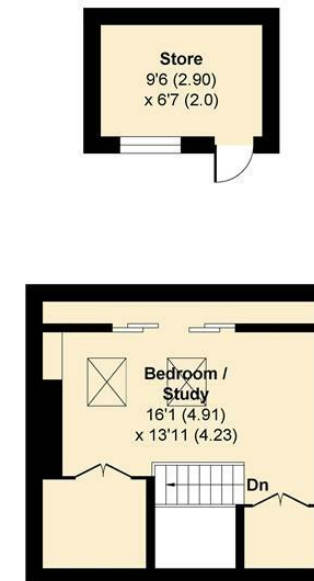
For identification only - Not to scale



GROUND FLOOR



FIRST FLOOR



Second FLOOR



Floor plan produced in accordance with RICS Property Measurement 2nd Edition. Incorporating International Property Measurement Standards (IPMS2 Residential). Produced for V&H Homes.

V&H Homes

01372 221 678

sales@vhhomes.co.uk

www.vhhomes.co.uk

rightmove

Zoopla

PrimeLocation.com

The Property Ombudsman

hometrack

V&H
HOMES

Your local property specialist