



Bowyers Close, Ashted KT21 1LF

V&H
HOMES

Your local property specialist

Bowyers Close Ashted KT21 1LF

A rare opportunity to acquire a two-bedroom bungalow, ideally situated within easy, level walking distance of Ashted Village High Street. Offered for sale with no onward chain.

Attached Bungalow

Two Double Bedrooms

Lounge/Dining Room

Fitted Kitchen

Ashted Village Location

In Need of Modernisation

Residents Parking

EPC Rating C





The property is in need of modernisation but offers excellent potential. It currently comprises a fitted kitchen and bathroom, a spacious lounge/dining room, and two generously sized double bedrooms. One of the bedrooms benefits from direct access to the rear garden, making it a versatile space that could also serve as a dining room or home office.

Outside, the rear garden is westerly facing and predominantly laid to lawn, providing a pleasant outdoor area with scope for further landscaping.

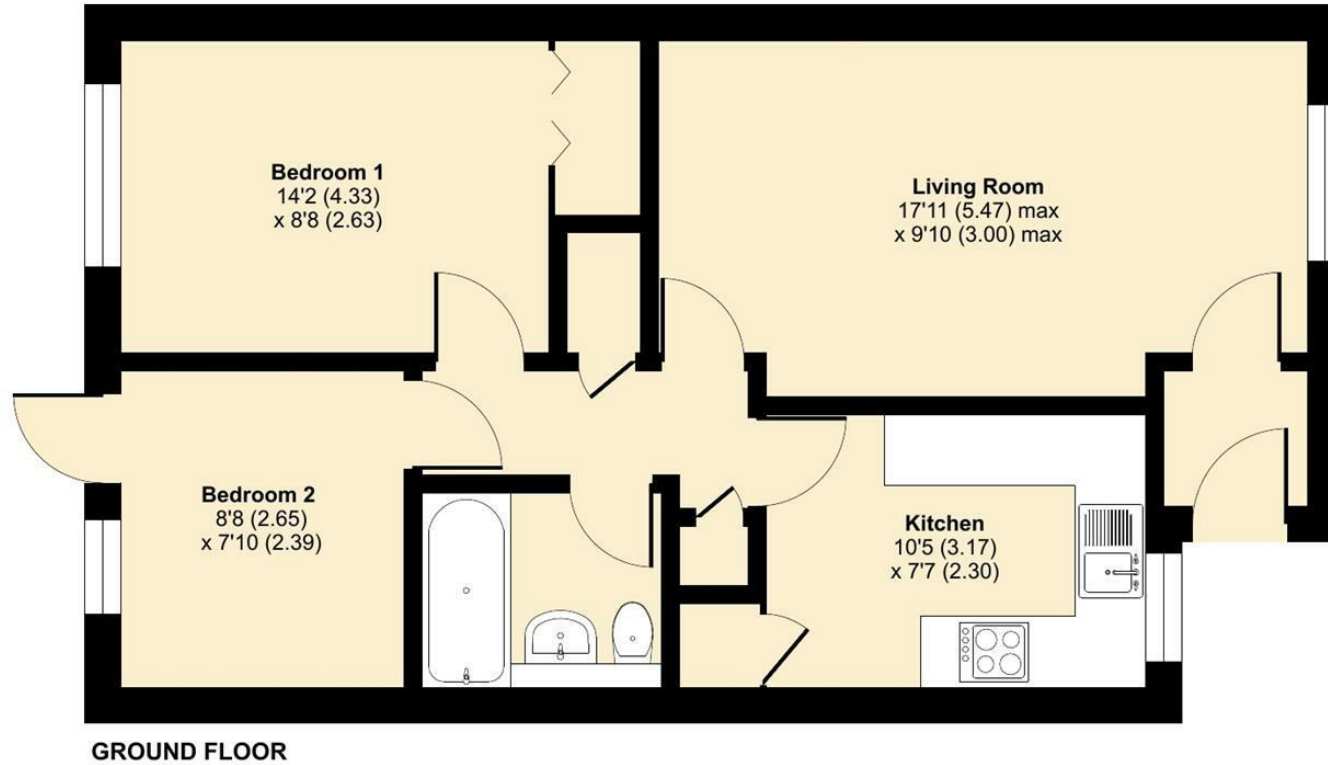
Located in Bowyers Close, a quiet cul-de-sac with on-street parking available for residents, the property enjoys a peaceful setting while remaining conveniently close to Ashted Village. Regular bus services provide easy access to nearby Epsom and Leatherhead town centres.



Bowers Close, Ashted, KT21

Approximate Area = 564 sq ft / 52.3 sq m

For identification only - Not to scale



Floor plan produced in accordance with RICS Property Measurement 2nd Edition, Incorporating International Property Measurement Standards (IPMS2 Residential). © nchecom 2026. Produced for V&H Homes. REF: 1447820

V&H Homes

01372 221 678

sales@vhomes.co.uk

www.vhomes.co.uk

rightmove 

Zoopla

 PrimeLocation.com

 The Property Ombudsman


hometrack

V&H
& HOMES

Your local property specialist