



Orchard Close, Leatherhead KT22 9JB

V&H
HOMES

Your local property specialist

Orchard Close Leatherhead KT22 9JB

A charming two bedroom semi-detached bungalow with a delightful 150 foot garden, situated in a tranquil cul-de-sac and close to local amenities.

Semi Detached Bungalow

Two Double Bedrooms

Modern Kitchen

No Onward Chain

Lounge

Family Bathroom

150 Foot Garden

Cul-De-Sac Location

Off Street Parking

EPC Rating D





This semi-detached bungalow has a cosy lounge and two double bedrooms. The well appointed kitchen is fitted with an array of cupboards and appliances, and leads to the large conservatory which has views over the garden.

Externally, the garden has mature trees and shrubs and is mainly laid to lawn. There is a shed for useful storage.

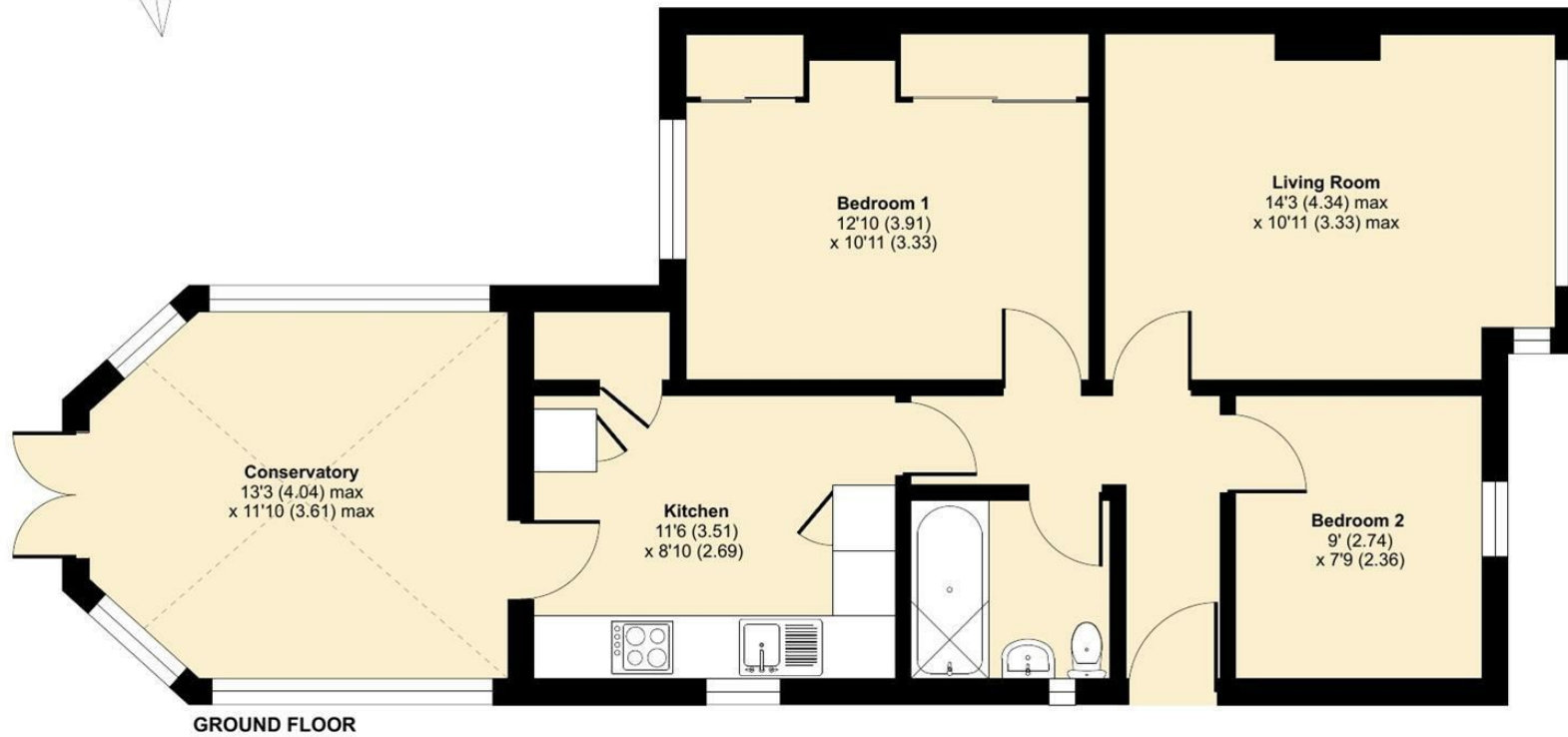
The driveway provides ample off-street parking.



Orchard Close, Fetcham, Leatherhead, KT22

Approximate Area = 752 sq ft / 69.8 sq m

For identification only - Not to scale



Floor plan produced in accordance with RICS Property Measurement Standards incorporating International Property Measurement Standards (IPMS2 Residential). © nchecon 2024. Produced for V&H Homes. REF: 1120912



V&H Homes

01372 221 678

sales@vhhomes.co.uk

www.vhhomes.co.uk



Your local property specialist