



The Ridings, Ashted KT21 2HQ

**V&H**  
HOMES

Your local property specialist



## The Ridings Ashted KT21 2HQ

*V&H HOMES brings to the market a beautifully presented and upgraded, rarely available first floor maisonette offered for sale with a private garden, ample parking, a garage and no onward chain.*

First Floor Maisonette

Two Double Bedrooms

Double Aspect Lounge / Dining Room

Newley Fitted Kitchen

New Contemporary Bathroom

Garage en Bloc

Quiet Cul-De-Sac Location

No Onward Chain

Westerly Facing Private Garden

EPC Rating: C







This spacious two double bedroom property is situated at the end of a quiet cul-de-sac consisting of only 8 dwellings and is within a stones throw of Ashted common, Ashted train station is also close by.

Accommodation comprises of entrance porch, stairs leading to first floor landing, double aspect lounge/dining room, a newly fitted kitchen with integrated appliances. and a newly fitted contemporary bathroom.

This delightful maisonette has two spacious double bedrooms, both with fitted wardrobes. There is also access to a loft giving added storage space.

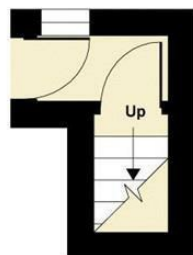
To the side of the maisonette is a good size private garden. This secluded garden is westerly facing, mainly laid to lawn with a patio area and also has a summer house.



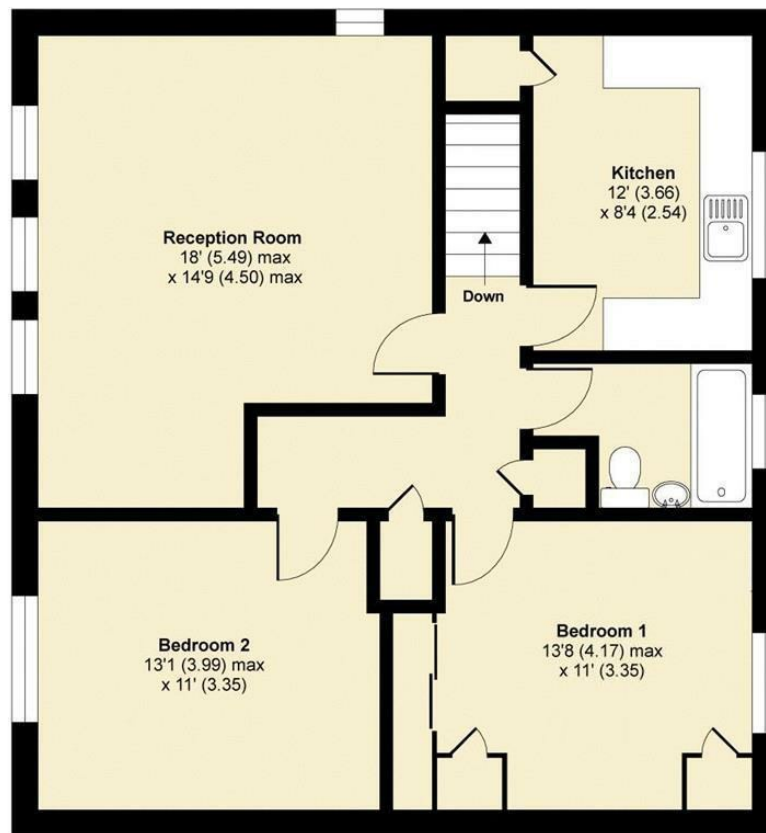
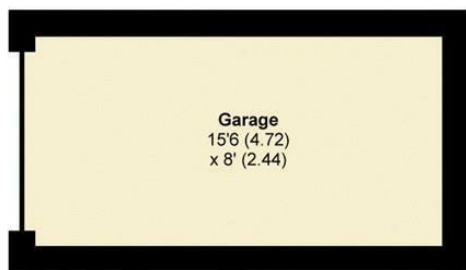


# The Ridings, Ashted, KT21

APPROX. GROSS INTERNAL FLOOR AREA 951 SQ FT 88.3 SQ METRES (INCLUDES GARAGE)



GROUND FLOOR



FIRST FLOOR

Whilst every attempt has been made to ensure the accuracy of the floor plan contained here, measurements of doors, windows and rooms are approximate and no responsibility is taken for any error, omission or misstatement. These plans are for representation purposes only as defined by RICS Code of Measuring Practice and should be used as such by any prospective purchaser. Specifically no guarantee is given on the total square footage of the property if quoted on this plan. Any figure given is for initial guidance only and should not be relied on as a basis of valuation.

Copyright nichecom.co.uk 2017 Produced for V&H Homes REF : 224046

**V&H Homes**

01372 221 678

[sales@vhhomes.co.uk](mailto:sales@vhhomes.co.uk)

[www.vhhomes.co.uk](http://www.vhhomes.co.uk)

**rightmove**

**Zoopla**

**PrimeLocation.com**

**The Property Ombudsman**

**hometrack**

**V&H HOMES**

Your local property specialist