



Petters Road, Ashted KT21 1NB

V&H
HOMES

Your local property specialist

Petters Road Ashted KT21 1NB

An extended family home offering spacious and versatile accommodation, with a superb 90ft rear garden – all within easy reach of excellent schools, Ashted's mainline station, and local shops. This thoughtfully improved property offers flexible accommodation. The ground floor features three distinct reception rooms, providing ample space for relaxing, entertaining, and working from home. Upstairs, you'll find three generously sized double bedrooms and a family bathroom.

Detached Family Home

Three Generous Double Bedrooms

Extended Kitchen, Bedroom & Study

Large Living Room & Dining Room

Downstairs WC

90 ft Rear Garden

Close to Station, Shops and Local Schools

EPC Rating: D





A generous entrance hall leads through to the kitchen / breakfast room, dining room, living room and downstairs WC. A separate room at the front of the house, with attractive bay window, lends itself to a dining room or family room. A large living room with feature fireplace has double doors leading out to the attractive garden. The property also benefits from a separate study.

Upstairs, there are three generous double bedrooms and a family bathroom.

Outside, the large garden is mainly laid to lawn and benefits from a vegetable garden at the rear, with raised beds. To the front, the property provides an integrated garage and off street parking for two or three cars.





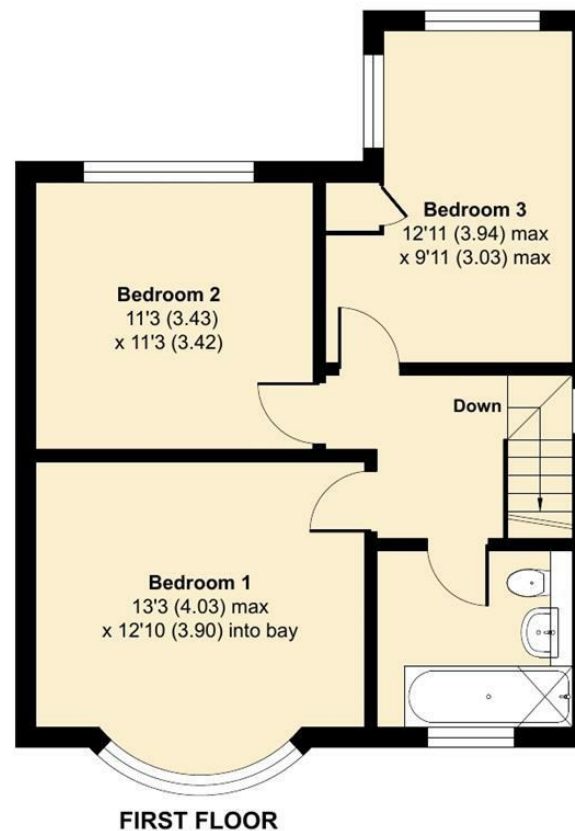
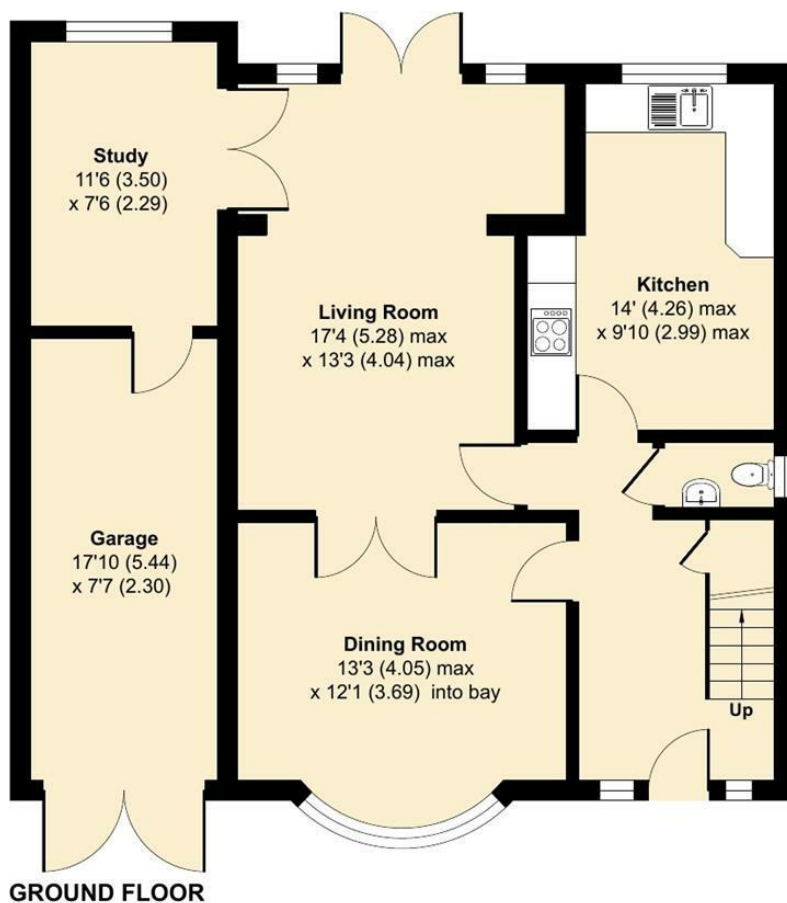
Petters Road, Ashted, KT21

Approximate Area = 1250 sq ft / 116.1 sq m

Garage = 135 sq ft / 12.5 sq m

Total = 1385 sq ft / 128.6 sq m

For identification only - Not to scale



Floor plan produced in accordance with RICS Property Measurement 2nd Edition, Incorporating International Property Measurement Standards (IPMS2 Residential). © n/checom 2025. Produced for V&H Homes. REF: 1269023



V&H Homes

01372 221 678

sales@vhhomes.co.uk

www.vhhomes.co.uk

rightmove

Zoopla

PrimeLocation.com



hometrack

V&H HOMES

Your local property specialist