



Cobham Road, Fetcham KT22 9HX

V&H
HOMES

Your local property specialist

Cobham Road
Fetcham KT22 9HX

Semi-Detached House

Three Bedrooms

Lounge

Kitchen/Dining Room

Rear Garden

Off Street parking

EPC Rating D

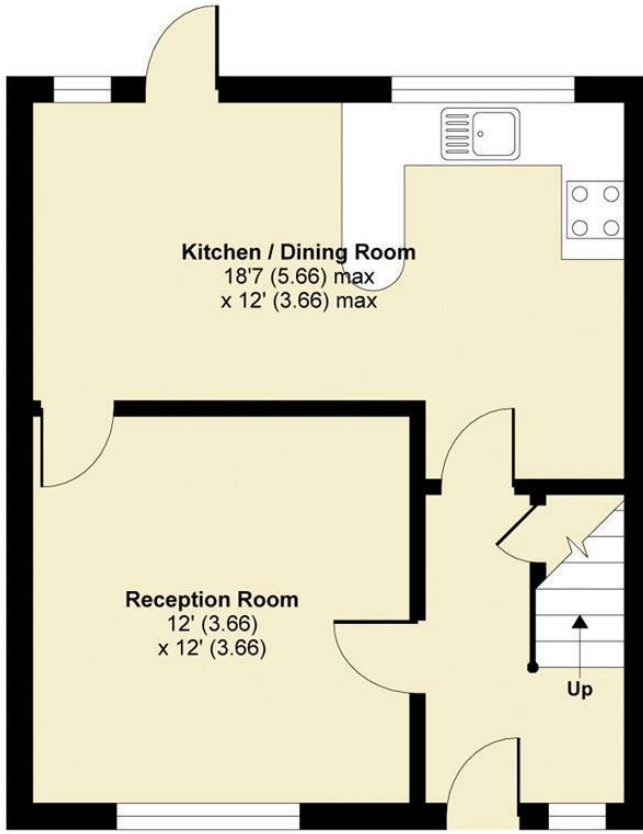
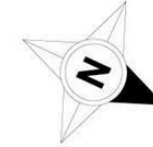
Mole Valley Council Tax Band E



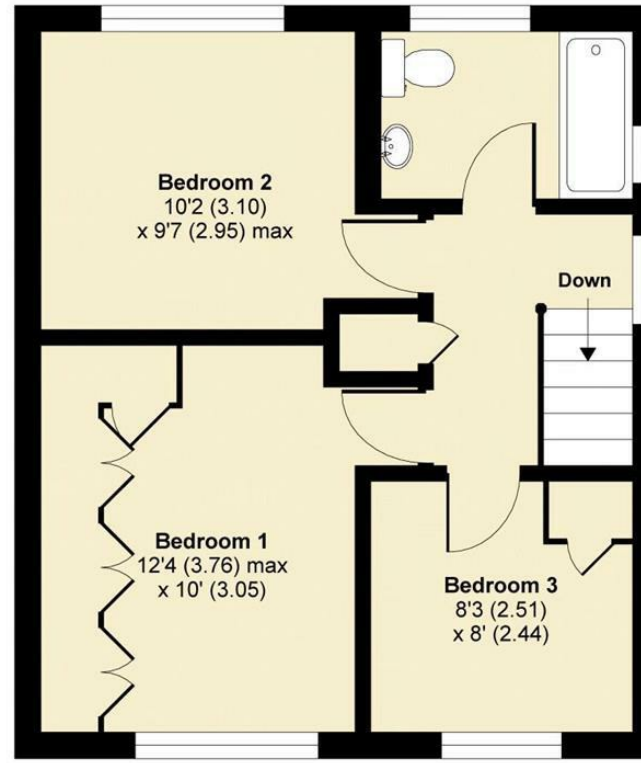


Cobham Road, Fetcham, Leatherhead, KT22

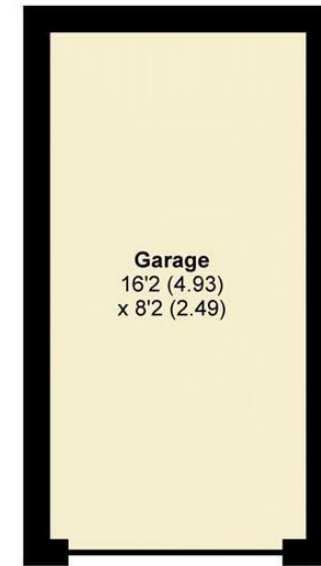
APPROX. GROSS INTERNAL FLOOR AREA 974 SQ FT 90.5 SQ METRES (INCLUDES GARAGE)



GROUND FLOOR



FIRST FLOOR



Whilst every attempt has been made to ensure the accuracy of the floor plan contained here, measurements of doors, windows and rooms are approximate and no responsibility is taken for any error, omission or misstatement. These plans are for representation purposes only as defined by RICS Code of Measuring Practice and should be used as such by any prospective purchaser. Specifically no guarantee is given on the total square footage of the property if quoted on this plan. Any figure given is for initial guidance only and should not be relied on as a basis of valuation.

Copyright nichecom.co.uk 2017 Produced for V&H Homes REF : 208447

V&H Homes

01372 221 678

sales@vhomes.co.uk

www.vhomes.co.uk



Your local property specialist