



Cobham Road, Leatherhead KT22 9JQ

V&H
HOMES

Your local property specialist

Cobham Road Leatherhead KT22 9JQ

*A charming three double bedroom split level
maisonette offering spacious accommodation
arranged over two floors.*

Split Level Maisonette

Three Double Bedrooms

Spacious Accommodation

Well Presented

Kitchen with Breakfast Bar

Modern Bathroom

Parking

Convenient Village Location

Loft Space

Double Glazed





This delightful property is situated in a convenient location in the heart of Fetcham village, set over two floors with its own private entrance.

On entering the maisonette via your own front door, stairs lead up to the first floor which offers a bright and airy lounge and a contemporary well equipped kitchen/breakfast room with ample storage units, fitted appliances and a useful storage cupboard.

In addition, on this floor there is a bedroom and a modern three piece bathroom. Stairs lead from the hallway up to two double bedrooms with air conditioning.

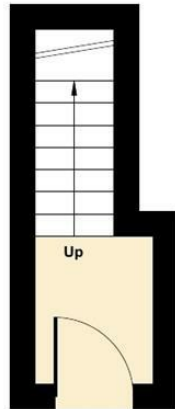
Externally, there is allocated off street parking for one car.



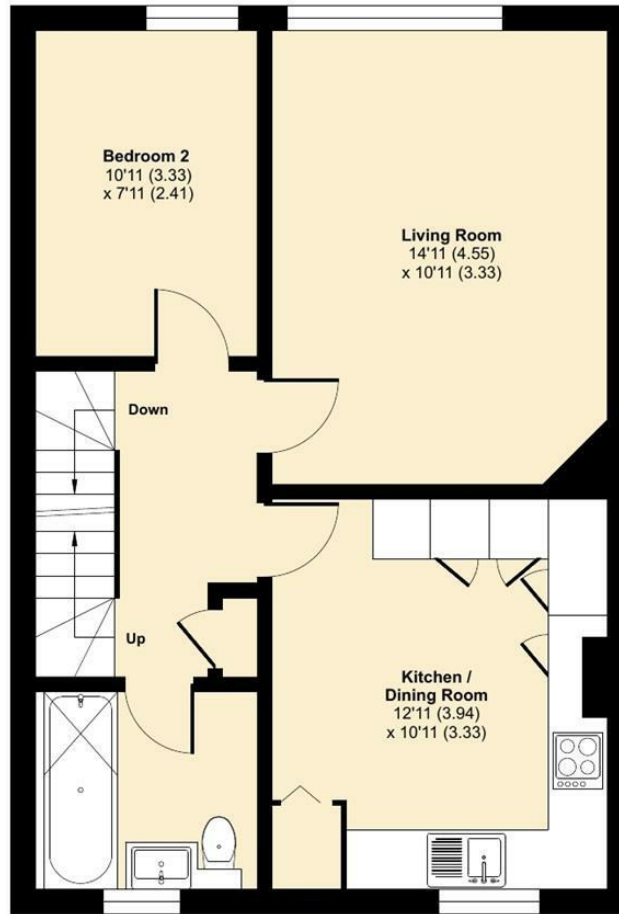
Cobham Road, Fetcham, Leatherhead, KT22

Approximate Area = 938 sq ft / 87.1 sq m

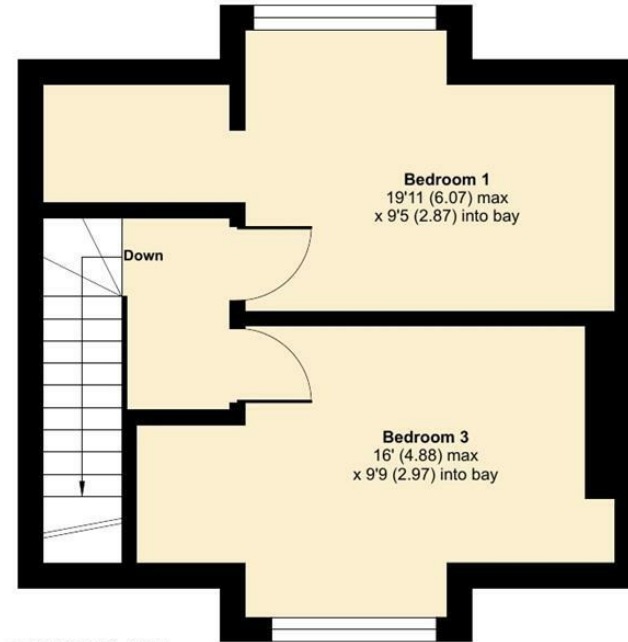
For identification only - Not to scale



GROUND FLOOR



FIRST FLOOR



SECOND FLOOR



Floor plan produced in accordance with RICS Property Measurement Standards incorporating International Property Measurement Standards (IPMS2 Residential). © nchecon 2024. Produced for V&H Homes. REF: 1088005



V&H Homes

01372 221 678

sales@vhomes.co.uk

www.vhomes.co.uk



Your local property specialist