



Maple Road, Ashted KT21 2LX

**V&H**  
HOMES  
Your local property specialist

## Maple Road Ashted KT21 2LX

*This attractive three bedroom detached period family home is located on a highly desirable central Ashted village road, within easy reach of the village and well regarded local schools.*

Detached Period Family Home

Three Bedrooms

Two Reception Rooms

Kitchen / Breakfast Room

Four Piece Bathroom

South West Facing Garden

NO ONWARD CHAIN

Near to Village & Schools

0.8 Miles to Station

Garage

The house is situated close to popular primary, secondary and private schools. Ashted station is just 0.8 miles from the property and offers trains to London Waterloo and Victoria in approximately 40 minutes.





The ground floor accommodation comprises of a living room with bay window and dining room with solid wood flooring and interconnecting glass doors. The kitchen / breakfast room provides integrated appliances, granite work surfaces and access to the garden.

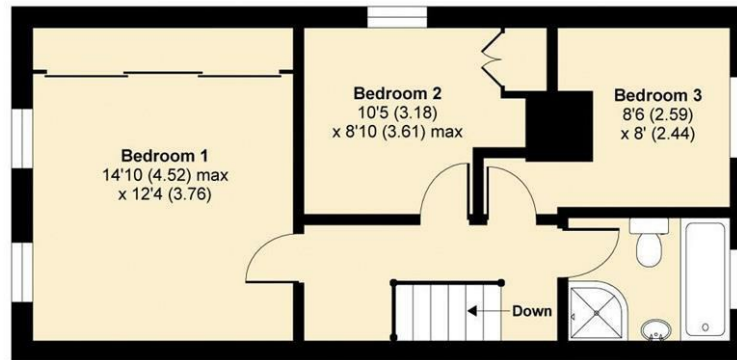
Upstairs there are three well proportioned bedrooms, two of which benefit from fitted wardrobe. There is also a bathroom with white suite and separate shower cubicle.

The property provides an attractive south west facing rear garden which benefits from a lawn, a patio and various flowers and plants.

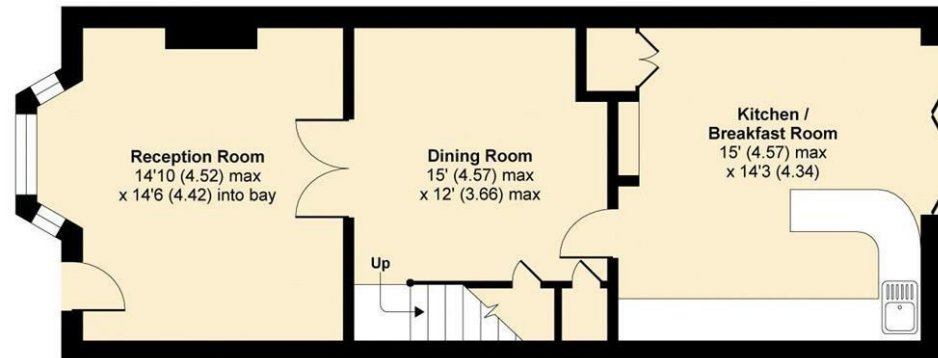


# Maple Road, Ashted, KT21

APPROX. GROSS INTERNAL FLOOR AREA 1089 SQ FT 101.2 SQ METRES



FIRST FLOOR



GROUND FLOOR



Whilst every attempt has been made to ensure the accuracy of the floor plan contained here, measurements of doors, windows and rooms are approximate and no responsibility is taken for any error, omission or misstatement. These plans are for representation purposes only as defined by RICS Code of Measuring Practice and should be used as such by any prospective purchaser. Specifically no guarantee is given on the total square footage of the property if quoted on this plan. Any figure given is for initial guidance only and should not be relied on as a basis of valuation.

Copyright nichecom.co.uk 2017 Produced for V&H Homes REF : 208203

V&H Homes

01372 221 678

sales@vhhomes.co.uk

www.vhhomes.co.uk



Your local property specialist