



The Murreys, Ashted KT21 2LU

V&H
HOMES

Your local property specialist

The Murreys Ashted KT21 2LU

A rarely available, highly sought-after and spacious three bedroom, two-bathroom home which benefits from a garage and three parking spaces. The house is located in a desirable Ashted village cul-de-sac and close to the train station.

Three Bedrooms

Two Bathrooms

Rarely Available

Garage & 3 Parking Spaces

Spacious Living Accommodation

Private Garden

Close to Village

0.8 Miles to Station

Cul-de-sac

EPC Rating: D

The house is located in a highly sought-after cul-de-sac 0.8 miles from Ashted Station which provides trains to London Waterloo and Victoria in approximately 40 minutes.





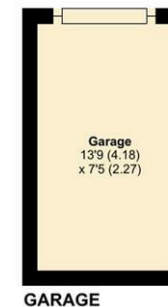
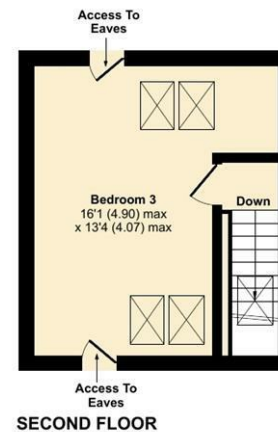
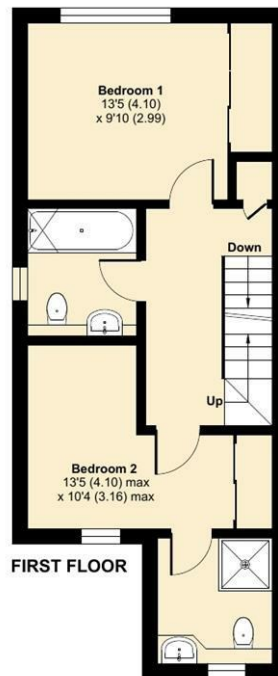
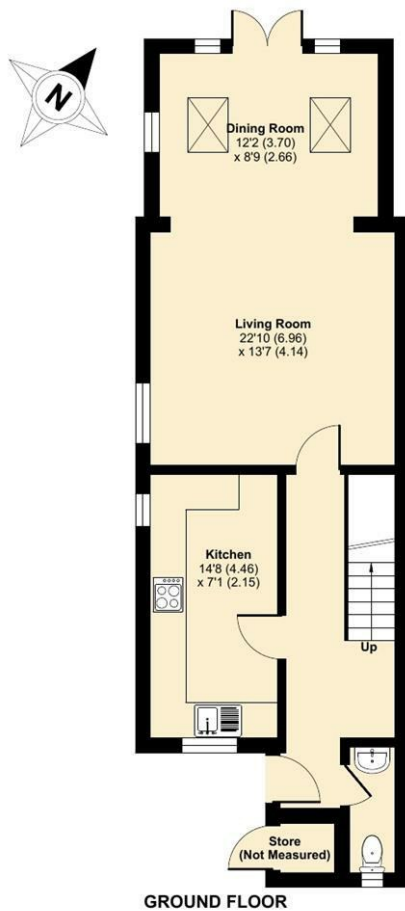
The superb accommodation comprises a modern kitchen with ample space for all appliances and an excellent range of cupboards. The open plan lounge / dining room has been extended and is an excellent size. with double aspect windows and rear skylights plus doors to the garden The ground floor of the property also benefits from a cloakroom / WC.

The first floor provides two bright bedrooms, both with fitted wardrobes. One bedroom leads through to a modern en-suite shower room, in addition to the main family bathroom. There is a third bedroom/study on the recently created top floor complete with skylight windows and eaves storage.

Externally, the property has a garage situated alongside the house with both power and light and parking available for three cars. There is a side access gate to the secluded rear garden which has a block paved terrace with borders of mature plants and trees.

Viewings of this rarely available home are highly recommended.





The Murreys, Ashted, KT21

Approximate Area = 1183 sq ft / 109.9 sq m

Garage = 102 sq ft / 9.4 sq m

Total = 1285 sq ft / 119.3 sq m

For identification only - Not to scale

Floor plan produced in accordance with RICS Property Measurement 2nd Edition, Incorporating International Property Measurement Standards (IPMS2 Residential). © nchecon 2025. Produced for V&H Homes. REF: 1347134



V&H Homes

01372 221 678

sales@vhhomes.co.uk

www.vhhomes.co.uk

rightmove

Zoopla

PrimeLocation.com



hometrack

V&H
HOMES

Your local property specialist