



The Old Street, Leatherhead KT22 9QJ

V&H
HOMES

Your local property specialist

The Old Street Leatherhead KT22 9QJ

A delightful well appointed two bedroom mid terrace character cottage, situated in a sought after location within easy reach of Fetcham village centre.

Characterful Cottage

Two Bedrooms

Two Bathrooms

Off Street Parking for Two Cars

Village Location

Well Presented Throughout

Contemporary Kitchen Diner

Conservation Area

Delightful Rear Garden

EPC Rating D

The property is located in a quiet road just under half a mile from Fetcham village centre offering a range of local shops and amenities.





Downstairs this charming home offers a welcoming sitting room with an electric log burner leading through to a spacious bright contemporary kitchen/dining room fitted with a range of integrated appliances and finished with granite worktops. The attractive airy glassed roof dining area overlooks the rear garden and benefits from French doors opening out onto a patio.

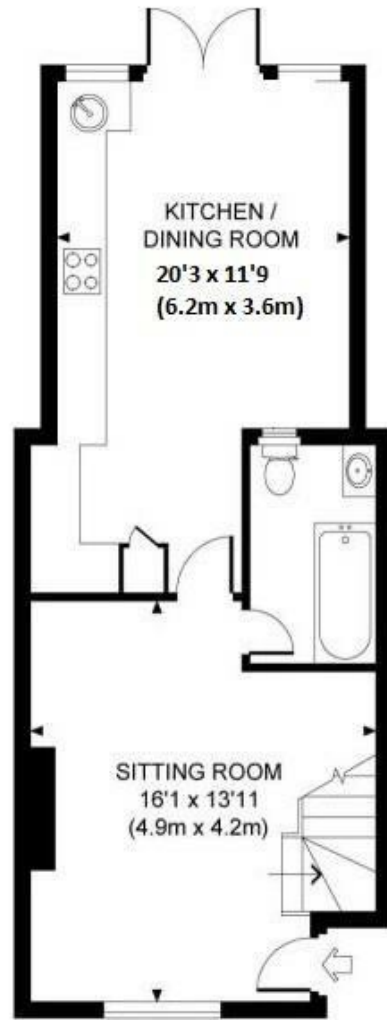
Completing the ground floor accommodation is a three piece family bathroom with a roll top bath.

Stairs lead from the sitting room upstairs to two double bedrooms including one with an ensuite shower room.

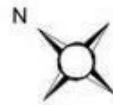
Outside to the front the garden is landscaped with parking for two cars.

To the rear is a delightful garden offering an array of well stocked flower and shrub beds, ideal for al fresco dining.

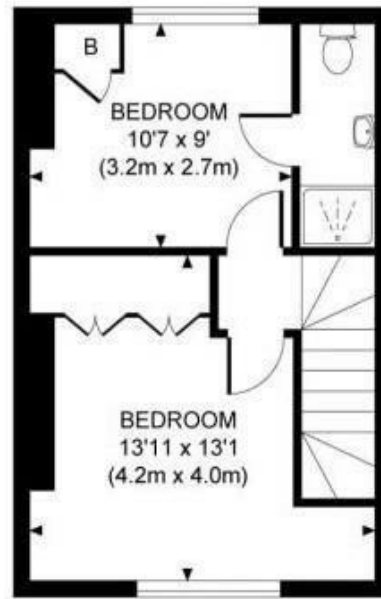




GROUND FLOOR



Approximate Gross Internal Area
776 sq ft / 72.1 sq m



FIRST FLOOR

V&H Homes

01372 221 678

sales@vhhomes.co.uk

www.vhhomes.co.uk



Your local property specialist