



Floral Court, Ashted KT21 2JL

V&H
HOMES

Your local property specialist

Floral Court Ashted KT21 2JL

A superb and spacious first floor maisonette which is over 900 sq ft and benefits from both front and rear balconies, two double bedrooms and two bathrooms. Offered to the market with a share of freehold and a long lease of over 900 years.

Two Double Bedrooms

Two Bathrooms

Two Balconies

Well Maintained Gardens

Residents Parking

0.6 Miles From Station

Share of Freehold

907 Sq Ft

Lease over 900 Years

Large Loft





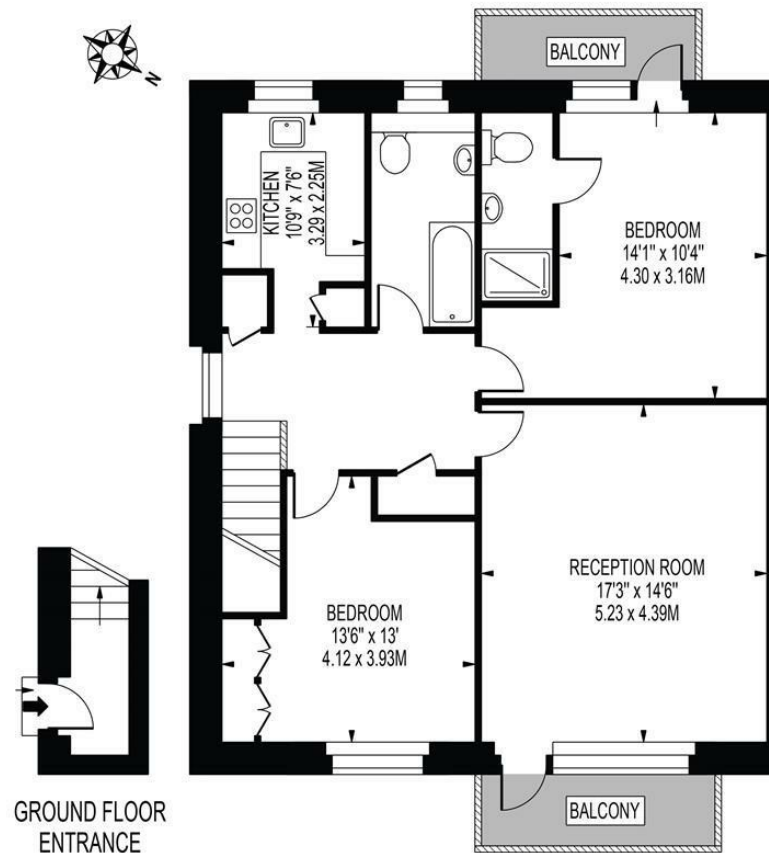
On entering the apartment via your own front door, a useful entrance hall leads to the spacious and bright living / dining room with a balcony. There is a fitted kitchen with ample storage and work space as well as two spacious double bedrooms, the master of which benefits from a en-suite shower room and a balcony. There is also a separate family bathroom and a large insulated loft.

This superb maisonette offers a share of the freehold, a lease of over 900 years, access to residents parking and a well maintained communal garden.



FLORAL COURT

APPROXIMATE GROSS INTERNAL FLOOR AREA: 907 SQ FT - 84.22 SQ M



FIRST FLOOR

FOR ILLUSTRATION PURPOSES ONLY

THIS FLOOR PLAN SHOULD BE USED AS A GENERAL OUTLINE FOR GUIDANCE ONLY AND DOES NOT CONSTITUTE IN WHOLE OR IN PART AN OFFER OR CONTRACT. ANY INTENDING PURCHASER OR LESSEE SHOULD SATISFY THEMSELVES BY INSPECTION, SEARCHES, ENQUIRIES AND FULL SURVEY AS TO THE CORRECTNESS OF EACH STATEMENT. ANY AREAS, MEASUREMENTS OR DISTANCES QUOTED ARE APPROXIMATE AND SHOULD NOT BE USED TO VALUE A PROPERTY OR BE THE BASIS OF ANY SALE OR LET.

V&H Homes

01372 221 678

sales@vhhomes.co.uk

www.vhhomes.co.uk

rightmove

Zoopla

PrimeLocation.com

The Property Ombudsman

hometrack

V&H
HOMES
Your local property specialist