



Wishford Court, Ashted KT21 1RR

V&H
HOMES

Your local property specialist

Wishford Court Ashted KT21 1RR

A spacious, two bedroom, two bathroom end of terrace house in Wishford Court, Ashted. This charming home is just 0.2 miles from Ashted Village High Street and is close to outstanding schools. Offered to the market with no onward chain.

Two Bedroom House

Two Bathrooms

Conservatory

Private Road

Ground Floor WC

Garage

Allocated Parking Space

Rear Garden

Moments from Ashted Village

No Onward Chain

The house is 0.7 miles from Ashted station, which provides frequent services to London Waterloo and Victoria in approximately 40 minutes.





The house comprises two bedrooms, one of which benefits from an en-suite, a family bathroom, a further downstairs W.C, a kitchen, and a bright and spacious living room leading to a conservatory.

The rear garden is well secluded and benefits from a lawn and patio.

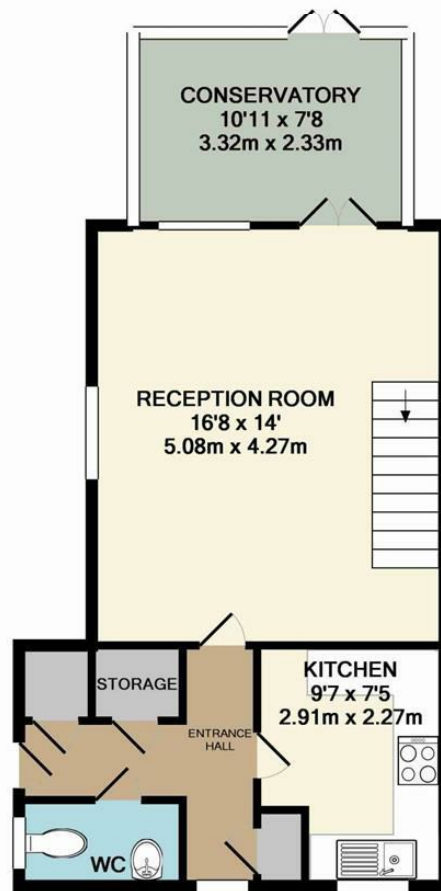
The property also benefits from a garage and an allocated parking space.

Situated in a development off a private road moments away from Ashted High Street, this property provides convenient and practical accommodation.

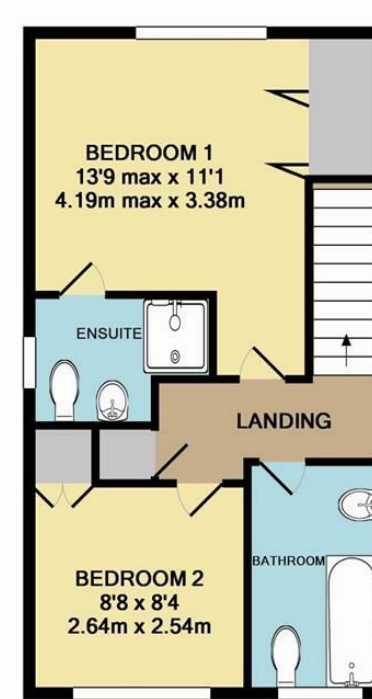




Garage



Ground Floor



1st Floor

Total Approx. Floor Area 850 Sq.Ft. (79.0 Sq.M.)

Whilst every attempt has been made to ensure the accuracy of the floor plan contained here, measurements of doors, windows, rooms and any other items are approximate and no responsibility is taken for any error, omission, or mis-statement. This plan is for illustrative purposes only and should be used as such by any prospective purchaser. The services, systems and appliances shown have not been tested and no guarantee as to their operability or efficiency can be given

Made with Metropix ©2016

V&H Homes

01372 221 678

sales@vhomes.co.uk

www.vhomes.co.uk



Your local property specialist