



Beaconsfield Road, Epsom KT18 6HD

**V&H**  
HOMES

Your local property specialist

Beaconsfield Road  
Epsom KT18 6HD

*This stylish two-bedroom first-floor maisonette is set in the heart of Langley Vale, offering contemporary open-plan living, a fantastic private garden, and off-street parking.*

Two double bedrooms

First floor maisonette

Private landscaped garden

Off street parking for 2 cars

Modern bathroom

Open plan kitchen/living room

Countryside views

Brick built shed with power

EPC rating: C





The spacious kitchen and living area are filled with natural light, creating a welcoming space for relaxation and entertaining.

Both bedrooms are generously sized doubles, and the modern bathroom is finished to a high standard.

Outside, the beautifully landscaped garden provides a perfect retreat, featuring decking and a useful outbuilding. Off-street parking for two cars via Langley Close adds convenience.

With stunning countryside views and a superb location, this property is a must-see. Early viewing is highly recommended!



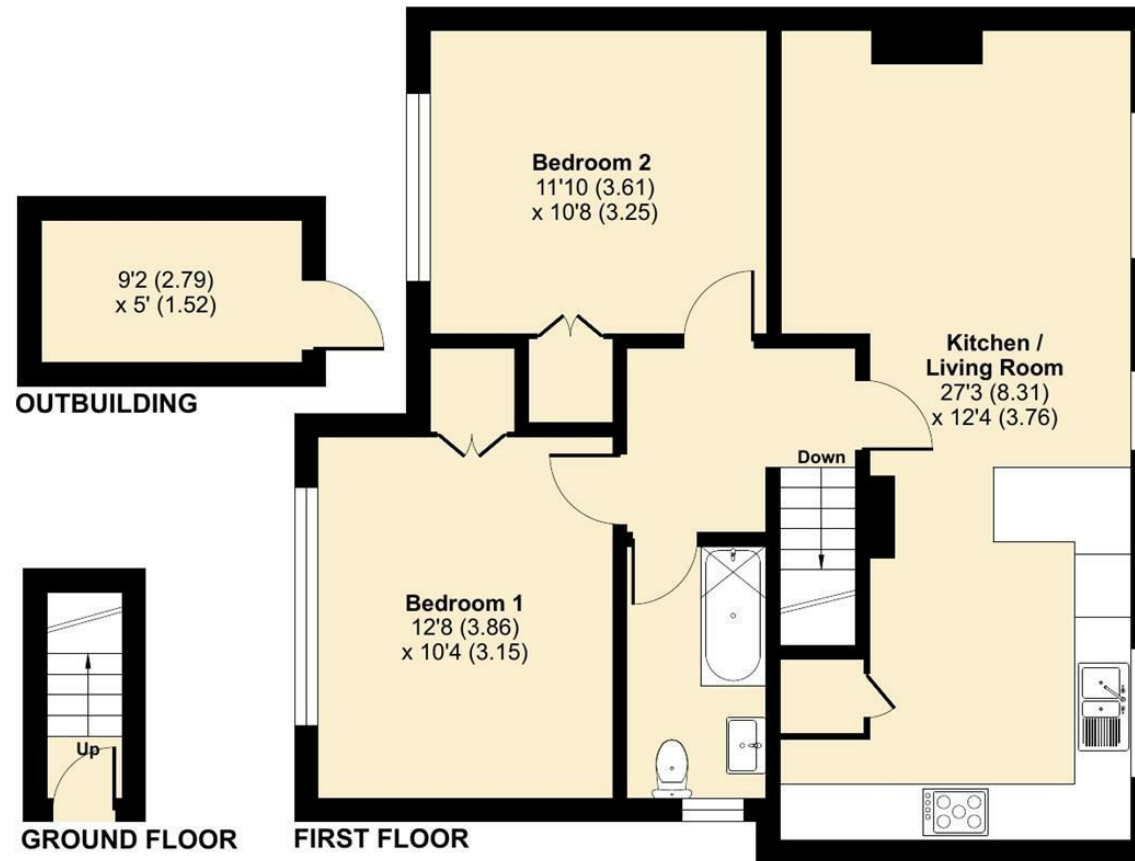
# Beaconsfield Road, Epsom, KT18

Approximate Area = 752 sq ft / 69.8 sq m

Outbuilding = 46 sq ft / 4.2 sq m

Total = 798 sq ft / 74 sq m

For identification only - Not to scale



Floor plan produced in accordance with RICS Property Measurement 2nd Edition, Incorporating International Property Measurement Standards (IPMS2 Residential). © ntechcom 2025. Produced for V&H Homes. REF: 1238354

## V&H Homes

01372 221 678

[sales@vhomes.co.uk](mailto:sales@vhomes.co.uk)

[www.vhomes.co.uk](http://www.vhomes.co.uk)



Your local property specialist