



Oaks Close, Leatherhead KT22 7SJ

**V&H**  
HOMES

Your local property specialist

## Oaks Close Leatherhead KT22 7SJ

*A well-presented split-level maisonette offering flexible accommodation with 2/3 bedrooms, two bath/shower rooms all in good decorative order, with allocated parking, located just a stone's throw from Leatherhead Train Station.*

Split-level maisonette

2/3 bedrooms

Modern kitchen

Family bathroom

Private balcony

Loft conversion

En-suite bedroom

Parking space

0.2 Miles To Leatherhead Station





A personal front door is accessed via an external staircase, to the first floor entrance. Accommodation comprises of a modern fitted kitchen, family bathroom, double bedroom, and a lounge with access to a private balcony. There is an second bedroom/study leading to a loft conversion, which provides an additional double bedroom with an ensuite. The property further benefits from a parking space and access to a communal garden.

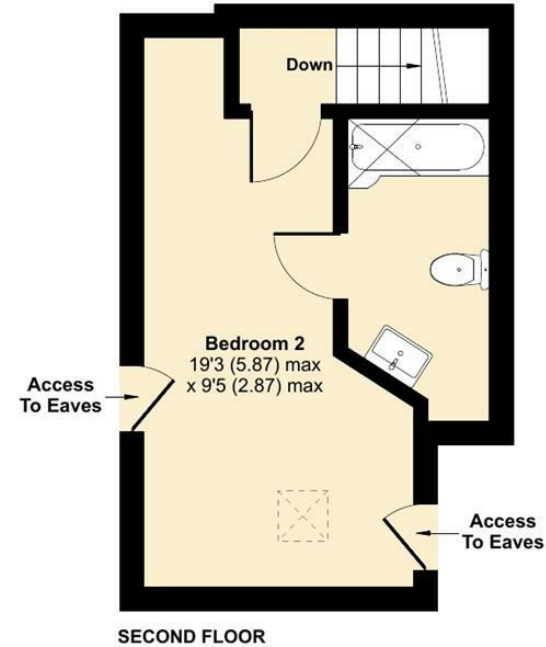
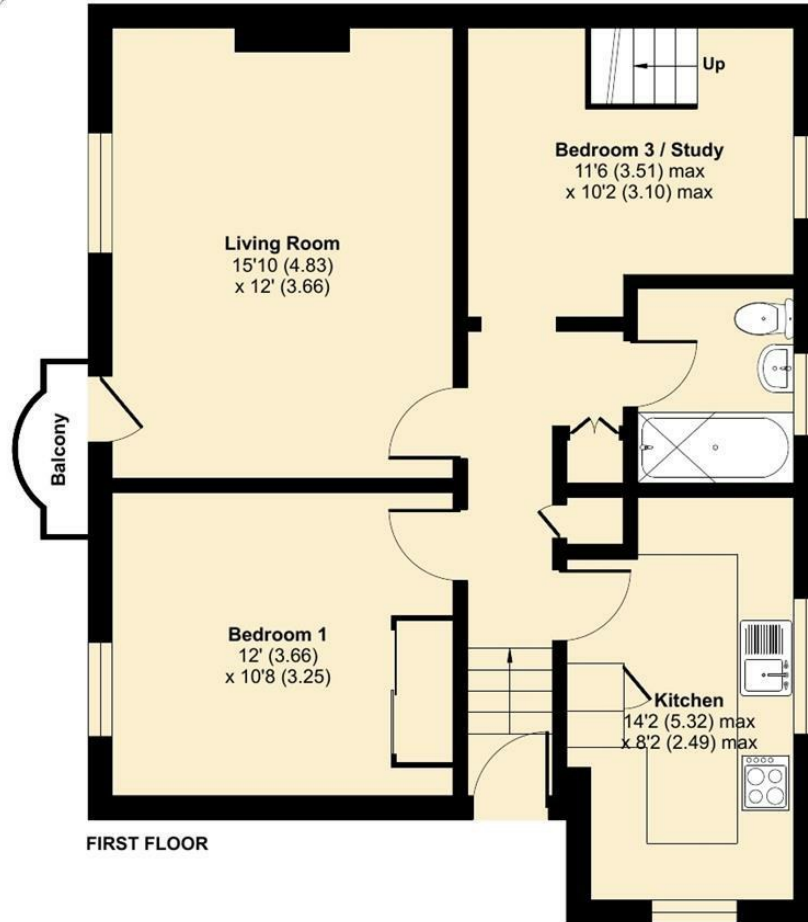
Just a two-minute walk from the train station, this property is perfect for commuters. No chain.



# Oaks Close, Leatherhead, KT22

Approximate Area = 897 sq ft / 83.3 sq m

For identification only - Not to scale



Floor plan produced in accordance with RICS Property Measurement Standards incorporating International Property Measurement Standards (IPMS2 Residential). © nchecon 2024. Produced for V&H Homes. REF: 1195932



**V&H Homes**

01372 221 678

[sales@vhomes.co.uk](mailto:sales@vhomes.co.uk)

[www.vhomes.co.uk](http://www.vhomes.co.uk)



Your local property specialist