

V&H  
&  
HOMES



26 Harriotts Lane, Ashtead  
Ashtead

V&H  
&  
HOMES

£950,000

# 26 Harriotts Lane

Ashted, Ashted

Council Tax band: G

Tenure: Freehold

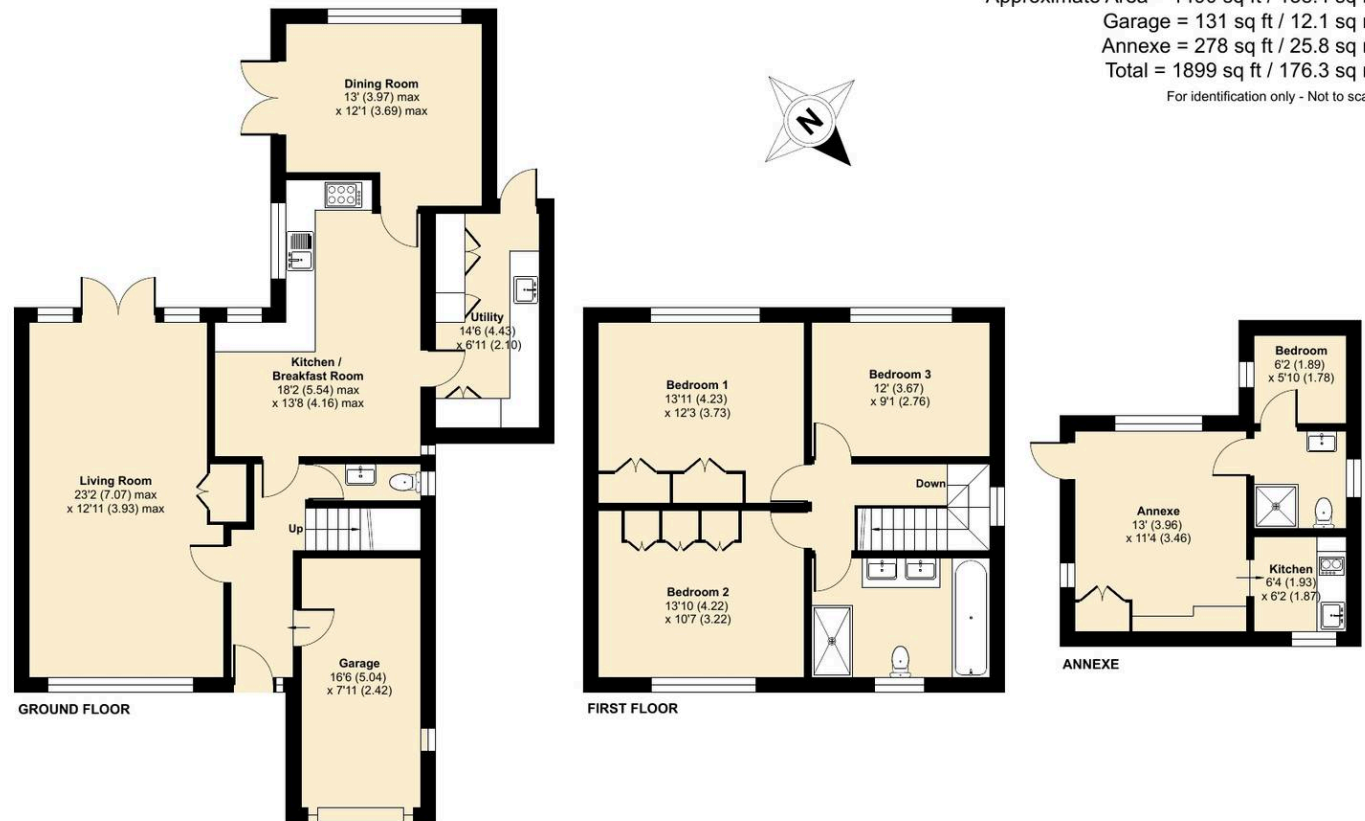
Approximate Area = 1490 sq ft / 138.4 sq m

Garage = 131 sq ft / 12.1 sq m

Annexe = 278 sq ft / 25.8 sq m

Total = 1899 sq ft / 176.3 sq m

For identification only - Not to scale



Floor plan produced in accordance with RICS Property Measurement 2nd Edition.

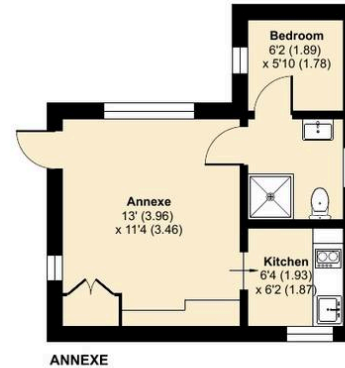
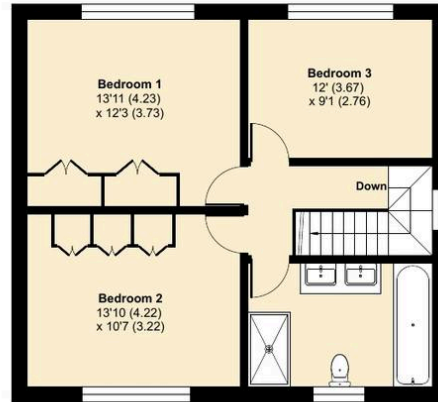
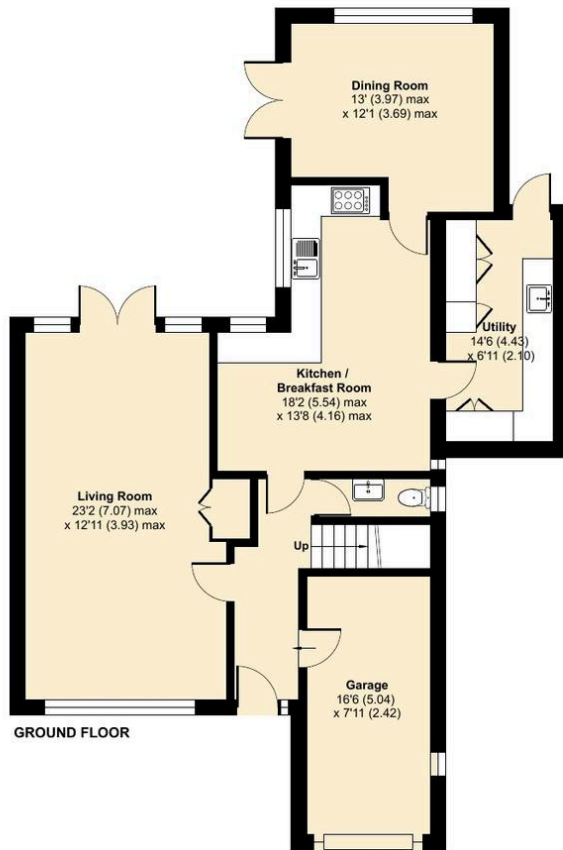


# Harriotts Lane, Ashtead, KT21

Approximate Area = 1490 sq ft / 138.4 sq m  
Garage = 131 sq ft / 12.1 sq m  
Annexe = 278 sq ft / 25.8 sq m  
Total = 1899 sq ft / 176.3 sq m  
For identification only - Not to scale

## 26 Harriotts Lane

Ashtead, Ashtead



Floor plan produced in accordance with RICS Property Measurement 2nd Edition, incorporating International Property Measurement Standards (IPMS2 Residential). © nctecom 2026. Produced for V&H Homes. REF: 1439768



