

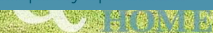


FLORAL COURT

Floral Court, Ashted KT21 2JL

V&H
HOMES

Your local property specialist



Floral Court Ashted KT21 2JL

A spacious multiple aspect second floor apartment affording far reaching views, a triple aspect lounge/dining room with both front and rear balconies, two double bedrooms, a modern fitted kitchen and bathroom.

Two Double Bedrooms

Lounge / Dining Room

Kitchen & Bathroom

Two Balconies

Communal Grounds

Garage Available

0.6 Miles From Ashted Station

EPC Rating: C

Council Tax Band: D



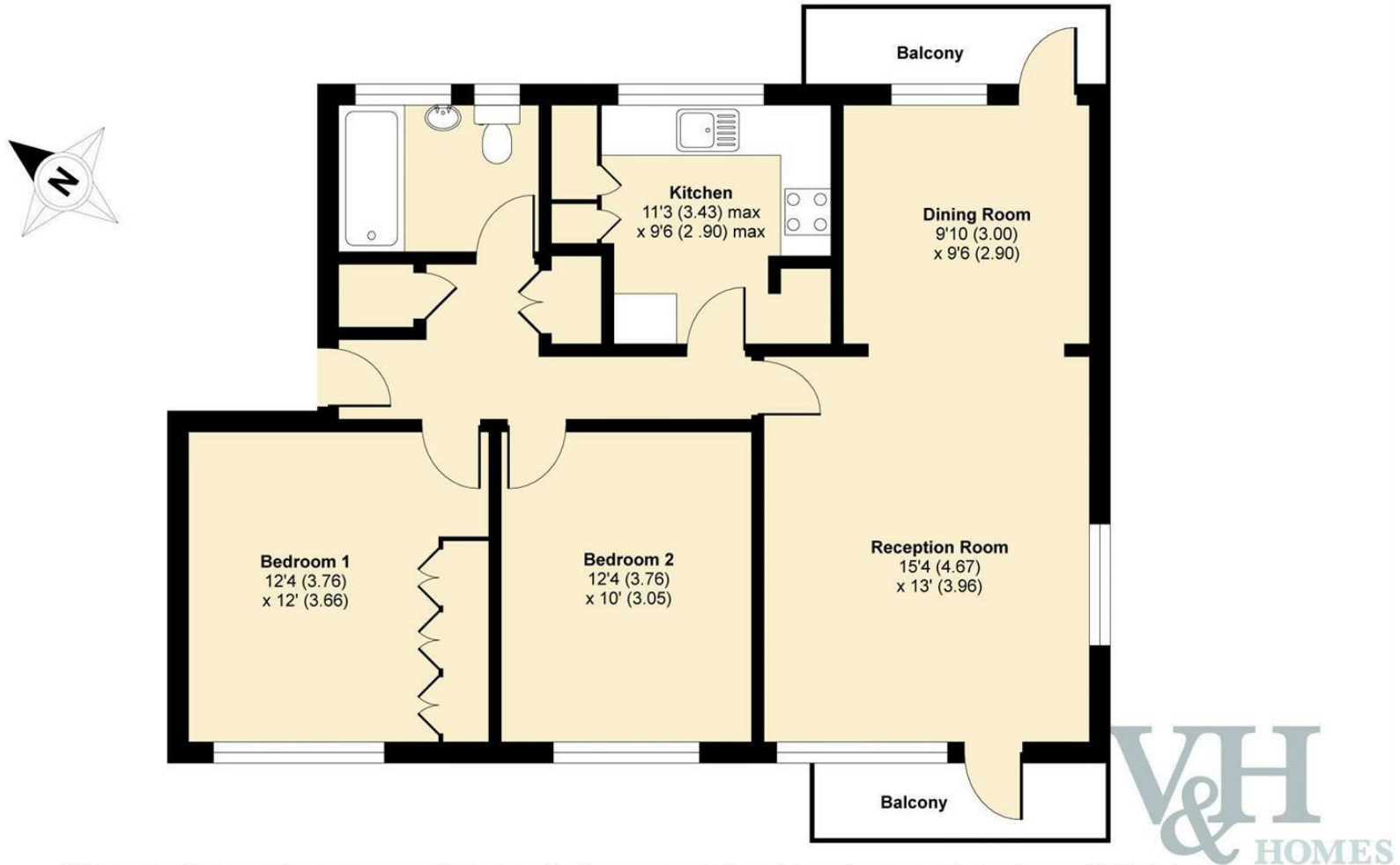


This property is situated within close proximity of Ashted Train Station, Ashted Recreation Ground and local shops, cafe's and restaurants.



Floral Court, Ashted, KT21

APPROX. GROSS INTERNAL FLOOR AREA 834 SQ FT 77.5 SQ METRES



Whilst every attempt has been made to ensure the accuracy of the floor plan contained here, measurements of doors, windows and rooms are approximate and no responsibility is taken for any error, omission or misstatement. These plans are for representation purposes only as defined by RICS Code of Measuring Practice and should be used as such by any prospective purchaser. Specifically no guarantee is given on the total square footage of the property if quoted on this plan. Any figure given is for initial guidance only and should not be relied on as a basis of valuation.

Copyright nichecom.co.uk 2017 Produced for V&H Homes REF : 211220

V&H Homes

01372 221 678

sales@vhhomes.co.uk

www.vhhomes.co.uk

rightmove

Zoopla

PrimeLocation.com

The Property Ombudsman

hometrack

V&H HOMES

Your local property specialist