



Oxshott Road, Leatherhead KT22 0EG

V&H
HOMES

Your local property specialist

Oxshott Road
Leatherhead KT22 0EG

This beautifully presented four bedroom detached family house offers bright and spacious accommodation arranged over three floors, offering spacious flexible living on a generous westerly facing plot.

Detached House

Four Double Bedrooms

Over 2440 sq.ft of Accommodation

Arranged Over Three Floors

Lounge Overlooking Beautiful Garden

Contemporary Kitchen/Dining/Living Room

Cloakroom & Study

Integrated Garage

West Facing Garden



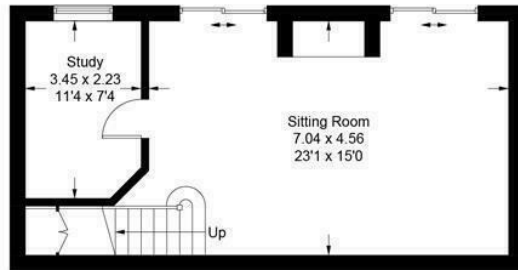


On the ground floor a welcoming entrance hall leads through to a spacious contemporary kitchen/living/dining room enjoying views across the rear garden. The kitchen is equipped with an array of fitted units, integrated appliances, and a central island. This floor also benefits from a utility room, a WC and internal access through to a double garage.

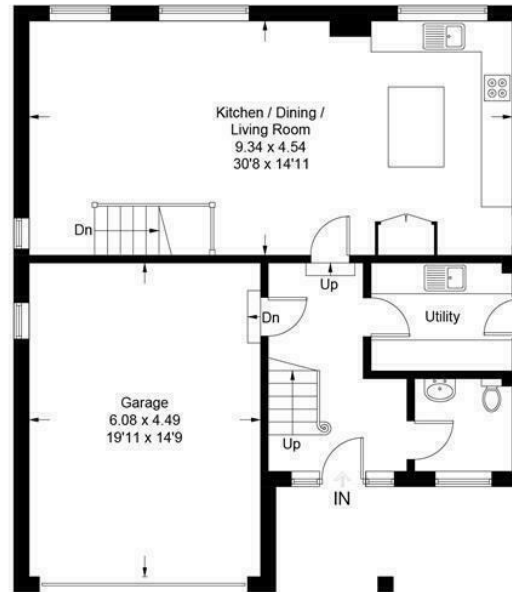
Stairs lead down to the sitting room with an attractive brick fireplace, two sliding doors to a large rear patio and a separate study. Externally there is a large westerly garden with a spacious patio ideal for al-fresco dining in the summer months.

On the first floor the principal bedroom has a range of fitted wardrobes and an ensuite bathroom. There are three further double bedrooms each with fitted wardrobes and a family bathroom.

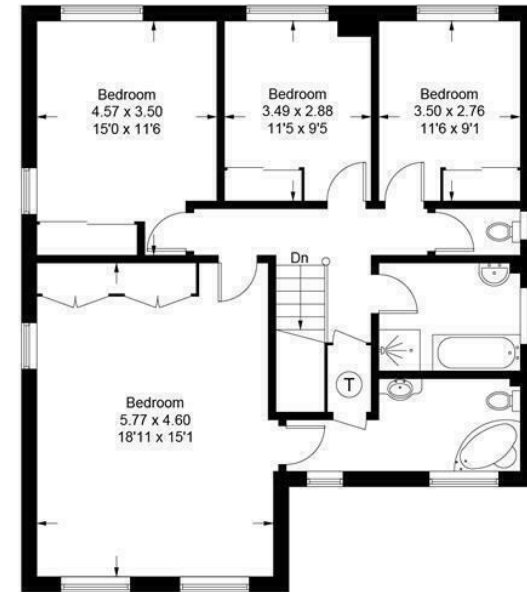




Lower Ground Floor



Ground Floor



First Floor

This plan is for layout guidance only. Not drawn to scale unless stated. Windows and door openings are approximate. Whilst every care is taken in the preparation of this plan, please check all dimensions, shapes and compass bearings before making decisions reliant upon them. (ID985688)
www.bagshawandhardy.com © 2023

V&H Homes

01372 221 678

sales@vhhomes.co.uk

www.vhhomes.co.uk

