



53 - 59 Leatherhead Road, Ashted KT21 2TP

V&H
HOMES

Your local property specialist

53 - 59 Leatherhead Road
Ashted KT21 2TP

V&H Homes are pleased to offer for sale this spacious, contemporary and bright, one bedroom retirement apartment, located within the popular Churchill Retirement Living development in Ashted.

Churchill Retirement Living

Top Floor Apartment

One Double Bedroom

Lift to all Floors

On Site Communal Parking

Guest Suite

Landscaped Garden

Owners Lounge

Secure Entry System

EPC Rating B





This superb accommodation comprises an entrance hall, a bright and airy living room, one double bedroom with a fitted wardrobe, a contemporary fitted kitchen equipped with an array of fitted units and appliances, and a modern shower room.

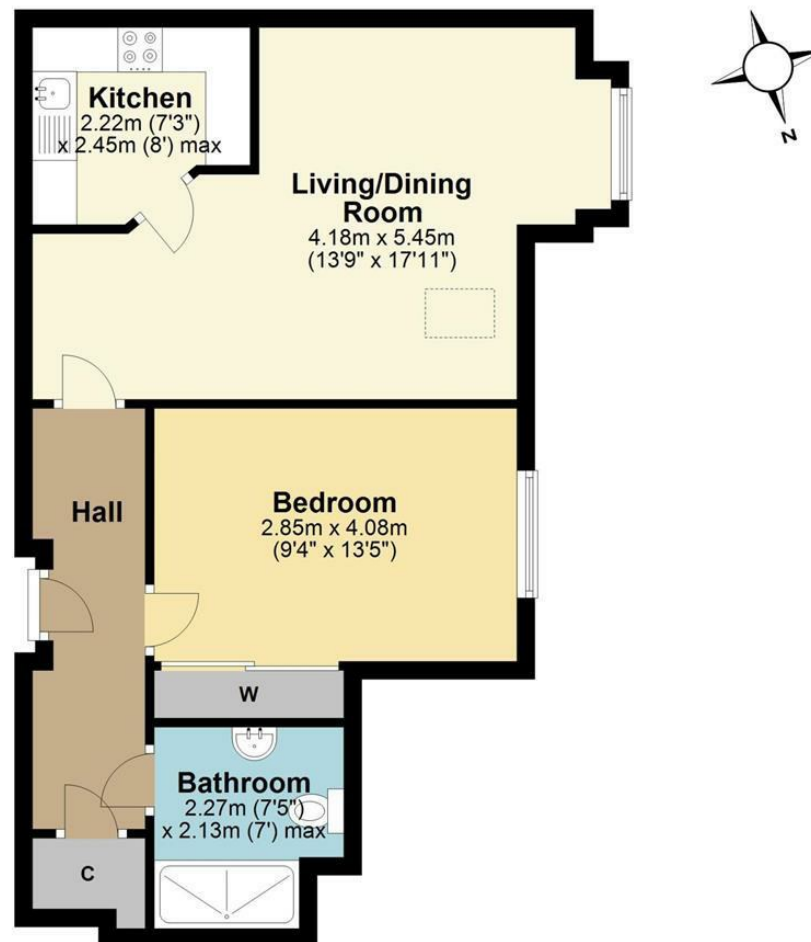
This well presented apartment is located on the top floor and is served by a lift to all floors.

The apartment offers an independent, active, safe and secure lifestyle in their retirement. A fully furnished guest suite is also available for visitors and the outside comprises a landscaped garden, terraced communal area leading on from the communal lounge and on site parking.



Second Floor

Approx. 50.5 sq. metres (543.4 sq. feet)



Total area: approx. 50.5 sq. metres (543.4 sq. feet)

Whilst every attempt has been made to ensure the accuracy of the floor plan contained here, measurements of doors, windows, rooms and any other item are approximate and no responsibility is taken for any error, omission, or misstatement. This plan is for illustrative purposes only and should only be used as such by any prospective purchaser.
Plan produced using PlanUp.

V&H Homes

01372 221 678

sales@vhhomes.co.uk

www.vhhomes.co.uk

rightmove 

Zoopla

 PrimeLocation.com

 The Property Ombudsman


hometrack

V&H
HOMES

Your local property specialist