



Barnett Wood Lane, Ashted KT21 2LW

SKINNERS LANE

V&H
HOMES

Your local property specialist

Barnett Wood Lane Ashted KT21 2LW

This beautifully presented and spacious ground floor Edwardian conversation apartment benefits from two double bedrooms, two bathrooms and a private garden. Centrally located near to Ashted station and the village centre and comes with share of freehold.

Stunning Ground Floor Edwardian Apartment

Share of Freehold

Two Double Bedrooms

Two Bathrooms

Private Rear Garden

No Chain

Allocated & Visitors Parking

0.4 Miles to Station

0.8 Miles to Ashted Village

EPC Rating: E

This spacious apartment is just 0.4 miles from Ashted station which provides trains to London Victoria & Waterloo in approximately 40 minutes. The village centre, with its restaurants and amenities, is also just 0.8 miles from the property.





This well located apartment boasts character features and offers a 19ft reception room which provides ample space to be used as a living room and a dining room. From the reception room double patio doors lead out onto a private southerly facing rear garden.

The contemporary dual aspect kitchen provides integrated appliances, overlooks the garden and is accessed via the reception room.

The master bedroom suite is substantial and benefits from a bay window and a recently renovated en-suite shower room. The second double bedroom is dual aspect and provides easy access to the modern family bathroom.

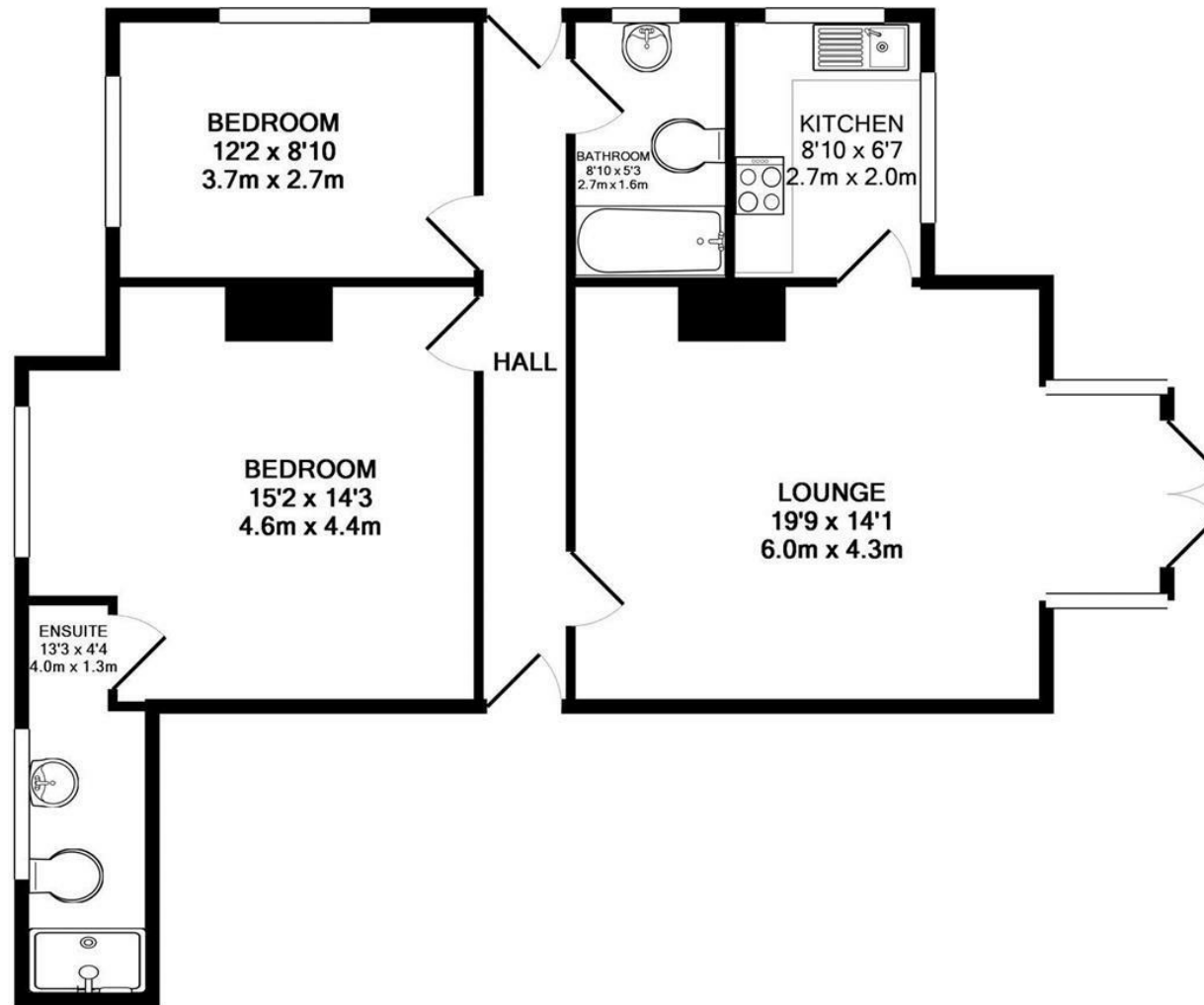
This pet friendly property benefits from allocated and visitors parking, access to communal gardens and a phone entry system.

Charges: An agreed £100 per month paid into the freeholder account that is managed by the freeholders (apartment owners) to cover communal maintenance and repairs.

Lease Length: 125 years from 25.01.17

Council Tax Band: A





V&H Homes

01372 221 678

sales@vhhomes.co.uk

www.vhhomes.co.uk

FLAT 1

TOTAL APPROX. FLOOR AREA 766 SQ.FT. (71.2 SQ.M.)

Measurements are approximate. Not to scale. Illustrative purposes only
Made with Metropix ©2015

