



Grove Road, Ashted KT21 1BE

V&H
HOMES

Your local property specialist

Grove Road Ashted KT21 1BE

V&H Homes are delighted to present this charming two double bedroom semi-detached character cottage, offered to the market with no onward chain and ideally positioned within the heart of Ashted Village.

Semi Detached House

Two Double Bedrooms

Two Reception Rooms

Garden Room/Home Office

Potential To Extend STPP

Period Features

Central Ashted Location

EPC Rating D





The ground floor offers a beautifully balanced layout, featuring a welcoming front-aspect lounge rich in character, alongside a centrally positioned dining room that enjoys a pleasant outlook over the side return and garden beyond. To the rear, a thoughtfully fitted kitchen provides both functionality and style, with direct access into a light-filled conservatory, seamlessly connecting the indoor space with the garden. Additional under-stairs storage enhances practicality.

Upstairs, the property continues to impress with a generous principal bedroom to the front aspect, a second well-proportioned double bedroom, and a spacious family bathroom. Access to the loft is conveniently provided via the landing, offering further potential subject to the usual consents.

Externally, the rear garden is a true highlight, being private and beautifully maintained, featuring a manicured lawn, patio seating area and a superb garden office, ideal for modern home working. Side gated access adds further convenience.

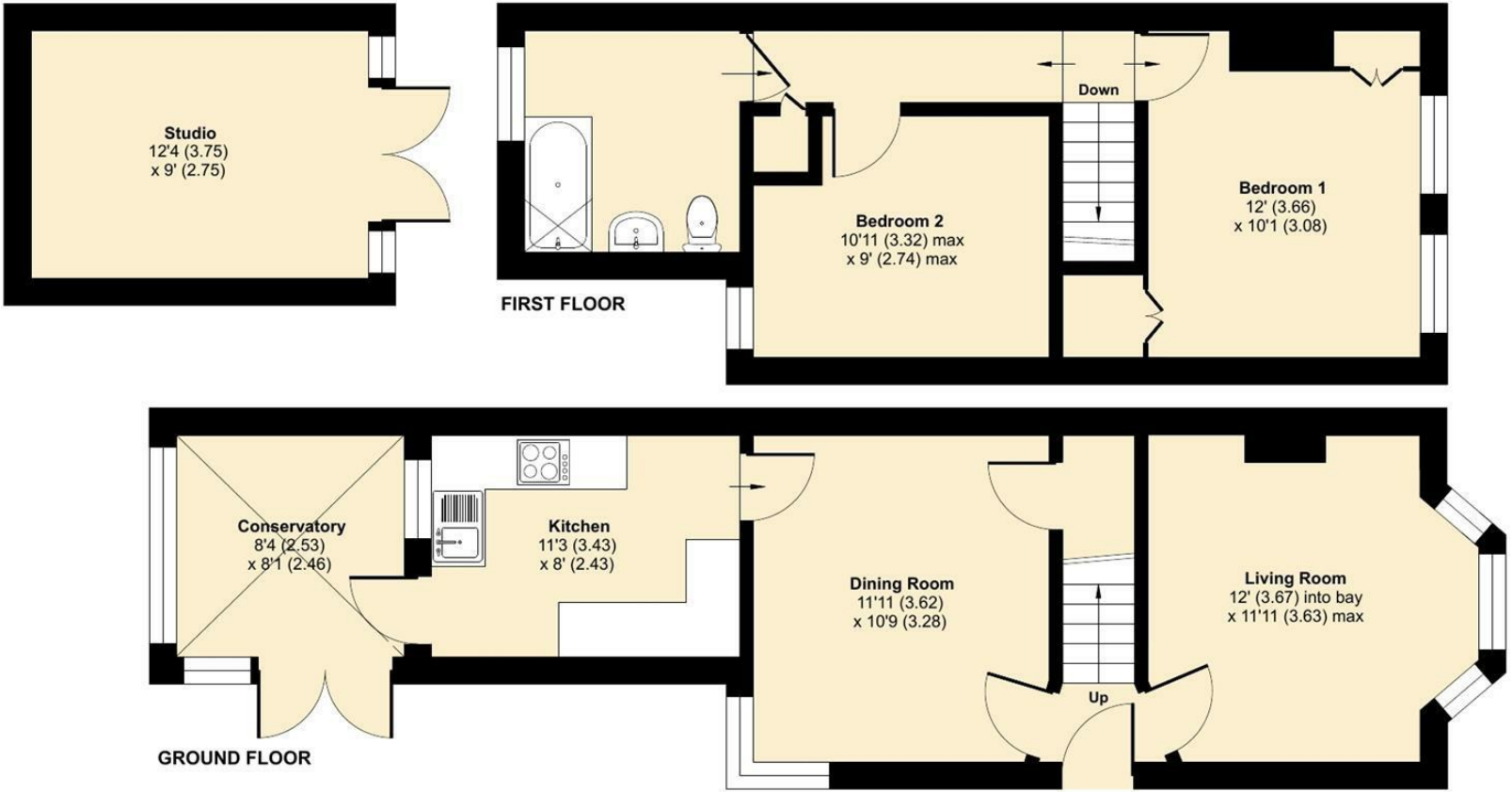
Perfectly positioned on the edge of Ashted Village, Grove Road enjoys immediate access to a vibrant selection of independent amenities, including cafés, traditional pubs, a bookshop, artisan food stores and a popular Marks and Spencer. The area also benefits from excellent transport links and highly regarded local schools, making it a sought-after setting for a variety of buyers.



Grove Road, Ashted, KT21

Approximate Area = 829 sq ft / 77 sq m
Outbuilding = 111 sq ft / 10.3 sq m
Total = 940 sq ft / 87.3 sq m

For identification only - Not to scale



Floor plan produced in accordance with RICS Property Measurement 2nd Edition, Incorporating International Property Measurement Standards (IPMS2 Residential). © ntechcom 2026. Produced for V&H Homes. REF: 1453340

V&H Homes

01372 221 678
sales@vhhomes.co.uk
www.vhhomes.co.uk

