



Park Lane, Ashted KT21 1DW

V&H
HOMES

Your local property specialist

Park Lane, Ashted

Highbury Cottage is in an outstanding location, on the desirable South side of Ashted, moments from the village centre and the station. This charming detached house benefits from three bedrooms, two bathrooms and a south-west facing and private garden.

South Ashted

Charming Detached House

Three Bedrooms

Three Reception Rooms

Bathroom & Shower room

South-West Facing Garden

Moments from Village Centre

0.8 Miles to Ashted Station

Utility Room

Cloakroom

Park lane is one of the most sought after roads in Ashted. Highbury Cottage is just 0.6 miles from Ashted Station, which offers trains to London Waterloo and Victoria in approximately 40 minutes.





On entering the house, a welcoming hall leads to a spacious dining room with central fireplace, which is semi-open plan to the large living room with French doors to the garden. The ground floor also benefits from a well proportioned kitchen with ample storage cupboards, good work space and room for appliances in addition to a breakfast table. The kitchen leads through to a utility room with further cupboards. There is also a study and a useful cloakroom / WC.

Stairs from the hall lead to the first floor which offers two bright double bedrooms, one large single bedroom and a family bathroom. In addition, the master bedroom has the benefit of an en-suite shower.

The house also provides a large and boarded loft.

Externally and to the front, the property is surrounded by high hedging which offers superb privacy. There is also driveway parking. The beautiful south-westerly mature rear garden is very private and mainly laid to lawn, with a mixture of trees and shrubs. There is also a large patio area, perfect for alfresco dining entertaining.

Viewings of this superbly located home are advised.



Highbury Cottage, Park Lane, Ashted, KT21

Approximate Area = 1539 sq ft / 142.9 sq m

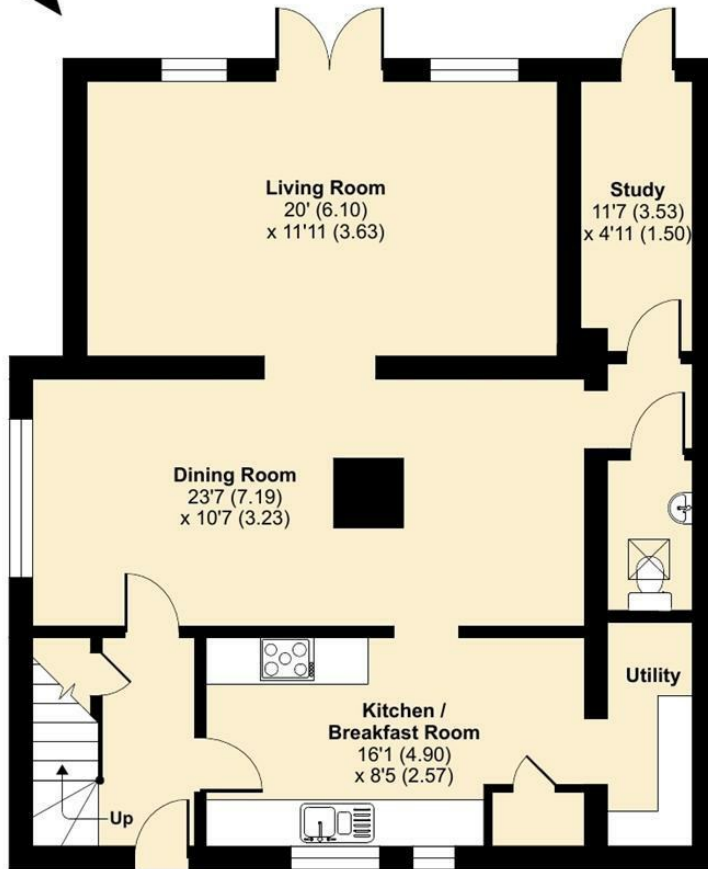
Limited Use Area(s) = 36 sq ft / 3.3 sq m

Total = 1575 sq ft / 146.3 sq m

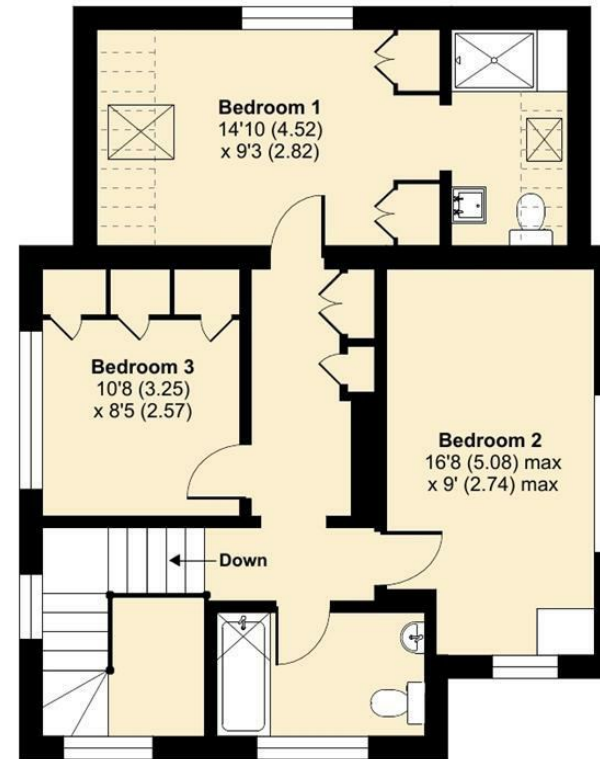
For identification only - Not to scale



Denotes restricted
head height



GROUND FLOOR



FIRST FLOOR



Floor plan produced in accordance with RICS Property Measurement Standards incorporating International Property Measurement Standards (IPMS2 Residential). © nichecom 2022. Produced for V&H Homes. REF: 837517



V&H Homes

01372 221 678

sales@vhhomes.co.uk

www.vhhomes.co.uk

rightmove

Zoopla

PrimeLocation.com



V&H
HOMES

Your local property specialist