



Epsom Road, Leatherhead KT22 8TB

V&H
HOMES

Your local property specialist

Epsom Road
Leatherhead KT22 8TB

Ground Floor Apartment

Two Double Bedrooms

Ensuite Shower Room

Family Bathroom

Secure Underground Parking for Two Cars

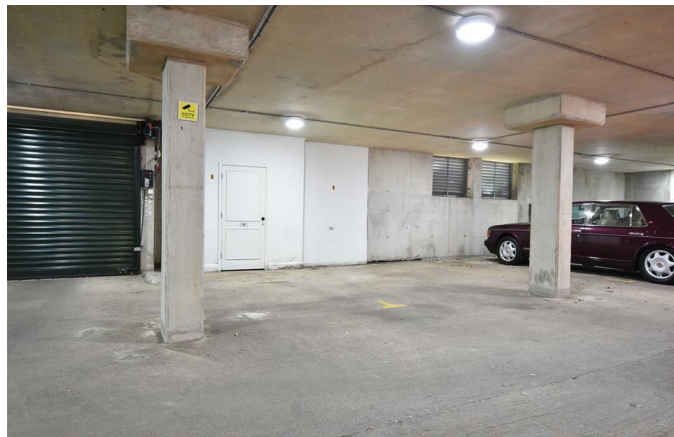
Communal Gardens

Unfurnished

EPC Rating: C

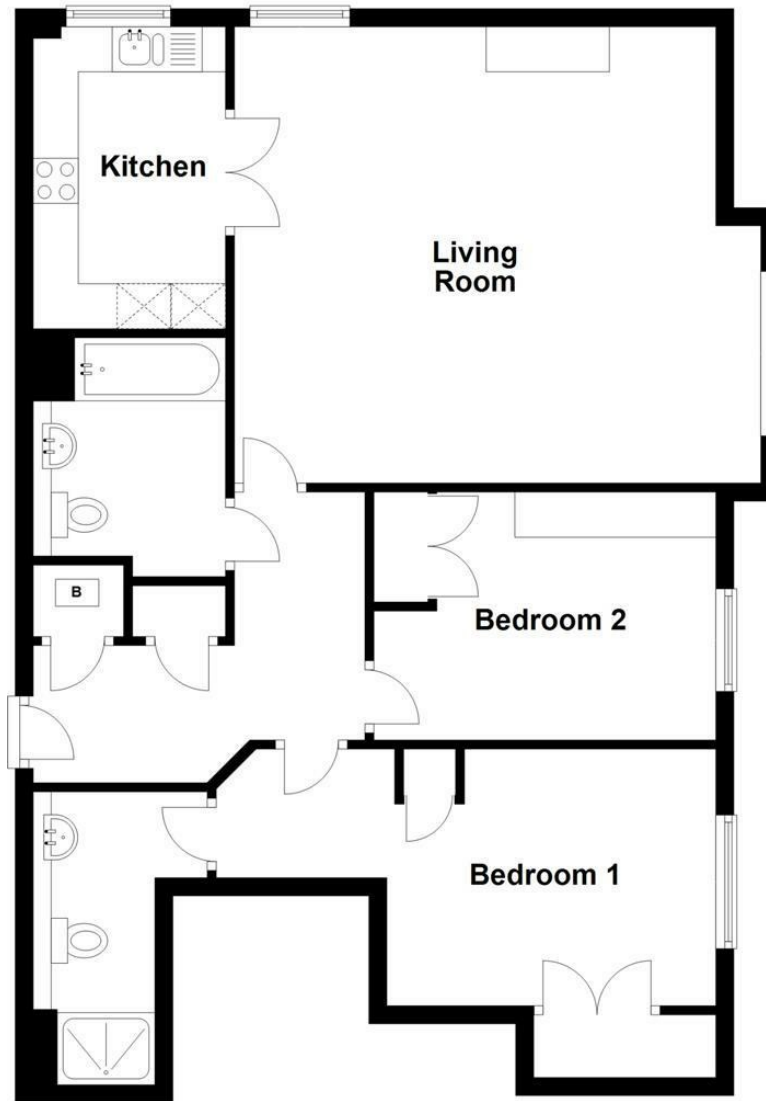
Council Tax Band E





Ground Floor

Approx. 82.9 sq. metres (892.8 sq. feet)



V&H Homes

01372 221 678

sales@vhhomes.co.uk

www.vhhomes.co.uk

