



**V&H**  
HOMES  
Your local property specialist  
01372 236 896  
www.vh-homes.co.uk

Skinner's Lane, Ashted KT21 2NR

**V&H**  
HOMES

Your local property specialist



## Skidders Lane Ashted KT21 2NR

*A light and bright Victorian end of terrace family home, offering extensive living accommodation including three double bedrooms, three reception rooms, a fitted kitchen/breakfast room, ground floor cloakroom and a first floor family bathroom with separate shower cubical.*

End of Terrace House

Three Double Bedrooms

Kitchen/Breakfast Room

Two Receptions

Rear Garden & Garage

Off Street Parking

EPC Rating E

Council Tax Band E





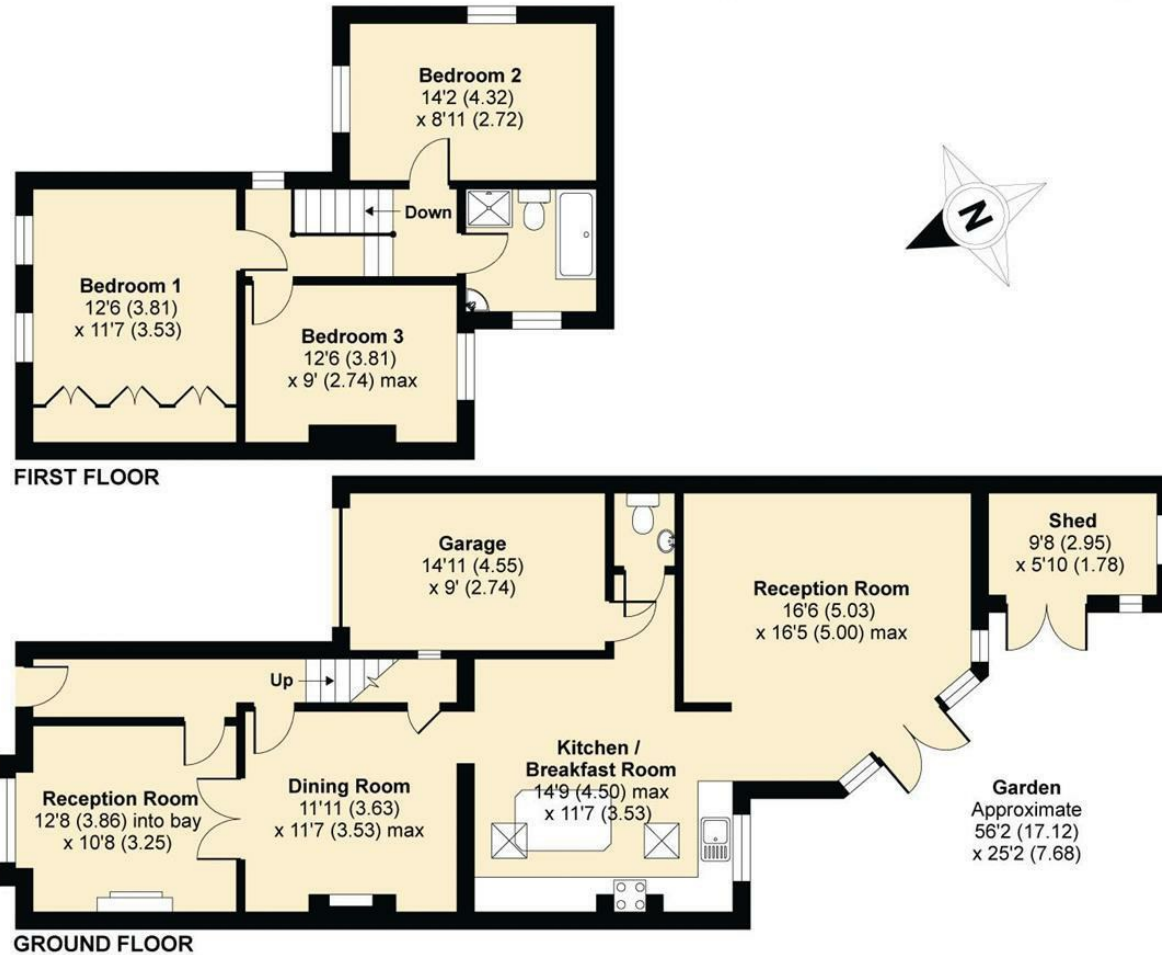


Externally there is a rear garden and a garage with off street parking. Located in a highly desirable area of Ashted and only 600m from the mainline station.



# Skidders Lane, Ashted, KT21

APPROX. GROSS INTERNAL FLOOR AREA 1540 SQ FT 143 SQ METRES (EXCLUDES SHED & INCLUDES GARAGE)



Whilst every attempt has been made to ensure the accuracy of the floor plan contained here, measurements of doors, windows and rooms are approximate and no responsibility is taken for any error, omission or misstatement. These plans are for representation purposes only as defined by RICS Code of Measuring Practice and should be used as such by any prospective purchaser. Specifically no guarantee is given on the total square footage of the property if quoted on this plan. Any figure given is for initial guidance only and should not be relied on as a basis of valuation.

Copyright nichecom.co.uk 2016 Produced for V&H Homes REF : 113288

V&H Homes

01372 221 678

sales@vhomes.co.uk

www.vhomes.co.uk

rightmove

Zoopla

PrimeLocation.com

The Property Ombudsman

hometrack

V&H HOMES

Your local property specialist