



Petters Road, Ashted KT21 1NB

V&H
HOMES

Your local property specialist

HOMES

Petters Road
Ashted KT21 1NB

Detached House

Flexible Accommodation

Four Bedrooms (one to ground floor)

Two Bathrooms

Off Street Parking

Rear Garden

Summer House

EPC Rating: D

Council Tax Band E

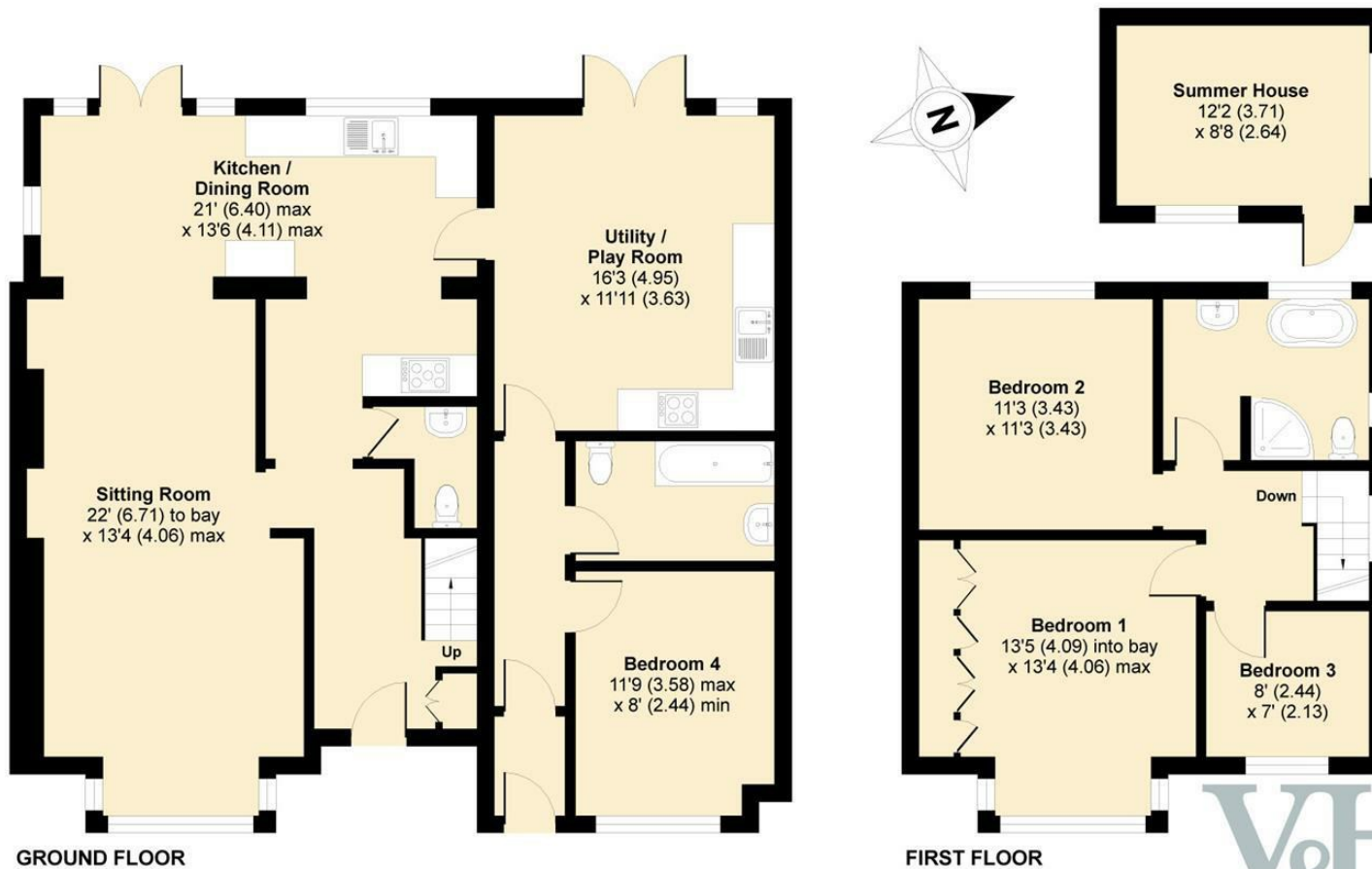
Available 6th September





Petters Road, Ashted, KT21

APPROX. GROSS INTERNAL FLOOR AREA 1647 SQ FT 153 SQ METRES (EXCLUDES SUMMER HOUSE)



Whilst every attempt has been made to ensure the accuracy of the floor plan contained here, measurements of doors, windows and rooms are approximate and no responsibility is taken for any error, omission or misstatement. These plans are for representation purposes only as defined by RICS Code of Measuring Practice and should be used as such by any prospective purchaser. Specifically no guarantee is given on the total square footage of the property if quoted on this plan. Any figure given is for initial guidance only and should not be relied on as a basis of valuation.

Copyright nichecom.co.uk 2018 Produced for V&H Homes REF : 314286

V&H Homes

01372 221 678

sales@vhomes.co.uk

www.vhomes.co.uk

rightmove

Zoopla

PrimeLocation.com

The Property Ombudsman

hometrack

V&H HOMES

Your local property specialist