



Tithe Barn Close, Kingston Upon Thames KT2 6RZ

V&H
HOMES

Your local property specialist

Tithe Barn Close Kingston Upon Thames KT2 6RZ

A spacious four bedroom town house over three floors with off street parking and a paved rear garden. Offered for sale with NO CHAIN.

Tithe Barn Close is a quiet residential road centrally located for Kingston Town Centre and mainline railway station.

Four Bedroom Town House

First Floor Lounge

Kitchen/Dining Room

Off Street Parking & Estate Permits Available

Paved Rear Garden

Family Bathroom

2nd Floor WC

No Chain

Approximately 500 yards to Station

EPC Rating D

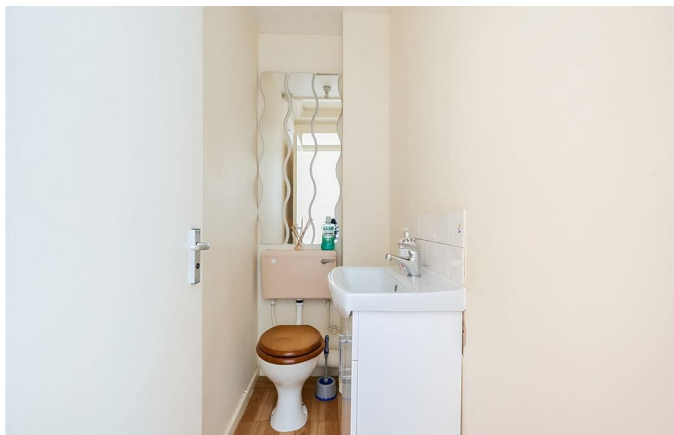




The current layout has a large fitted kitchen and a reception room/bedroom on the ground floor, a lounge and bedroom plus a family bathroom on the first floor and a further two double bedrooms and a wc on the second floor. All rooms are spacious and offer a flexible layout for multi generational families.

There is off street parking for one vehicle to the front of the property and a paved garden with a rear access gate.

Tithe Barn Close is a quiet residential road and is located perfectly to enjoy everything Kingston has to offer with the town centre and Kingston Train Station both just over 500 yards away.



Tithe Barn Close, Kingston Upon Thames, KT2

Approximate Area = 1104 sq ft / 102.5 sq m

For identification only - Not to scale



Floor plan produced in accordance with RICS Property Measurement Standards incorporating International Property Measurement Standards (IPMS2 Residential). © nichecom 2024. Produced for V&H Homes. REF: 1194543



V&H Homes

01372 221 678

sales@vhhomes.co.uk

www.vhhomes.co.uk



Your local property specialist