



Overdale, Ashted KT21 1PU

V&H
HOMES

Your local property specialist

Overdale Ashtead KT21 1PU

An immaculately presented and extended four bedroom semi-detached family home located on a highly sought after and quiet residential road. Conveniently located close to Ashtead Common, the station and excellent local schools.

Large Semi-Detached Home

Four Bedrooms

Spacious Kitchen / Dining Room

Two Further Reception Rooms

Utility Room

Mature Garden

Parking For Multiple Cars

Close to Ashtead Common

Excellent Local Schools

0.4 miles to Ashtead Station

Overdale is located in Lower Ashtead, close to the railway station and shops, including a Tesco Express. There are excellent local schools, including the City of London Freeman's and The Greville Primary School.





On entering the house, a welcoming entrance hall leads to a spacious kitchen/dining room which includes ample work surfaces, shaker style cupboards and a range of integrated appliances. The kitchen area opens into a spacious and bright vaulted dining room with Velux windows and French doors leading out into the garden. The ground floor of this superb house also offers a living room with charming bay window and a working fire place, an additional versatile reception room with French doors to the back garden, a useful utility room, a WC and a bedroom.

To the first floor, the landing leads to three further bedrooms including two double bedrooms with fitted wardrobes and a spacious and modern four piece family bathroom.

Externally and to the front, the property provides driveway parking for two cars. To the rear, the well maintained and mature landscaped garden is mainly laid to lawn and benefits from a patio, perfect for al-fresco dining in the warmer months.

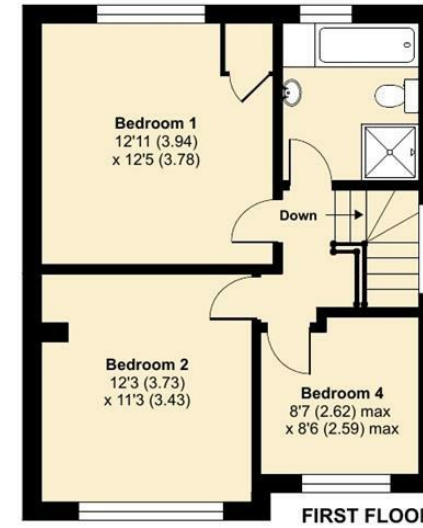
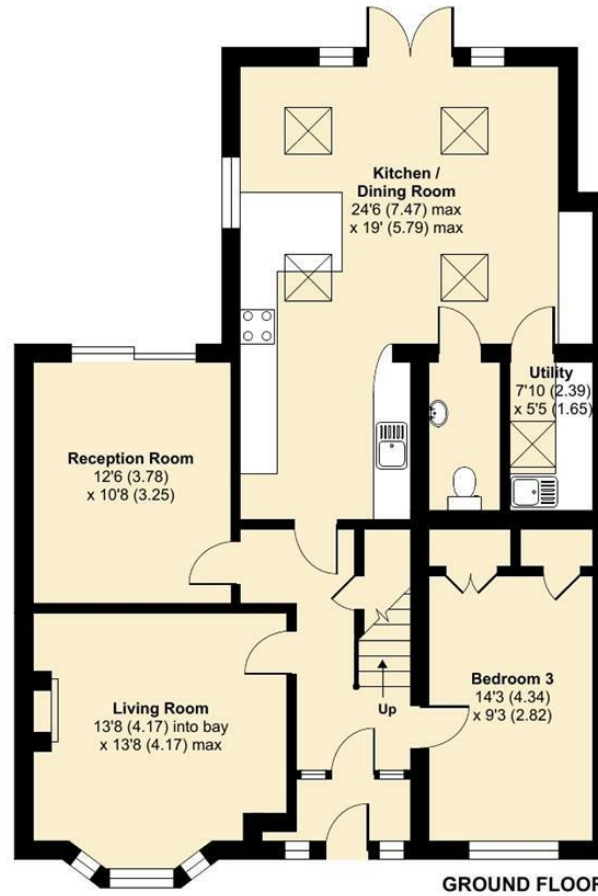




Overdale, Ashted, KT21

Approximate Area = 1590 sq ft / 147.7 sq m

For identification only - Not to scale



Floor plan produced in accordance with RICS Property Measurement Standards incorporating International Property Measurement Standards (IPMS2 Residential). © nchecon 2022. Produced for V&H Homes. REF: 814041



V&H Homes

01372 221 678

sales@vhhomes.co.uk

www.vhhomes.co.uk

