



Chalk Lane, Epsom KT18 7BS

V&H
HOMES

Your local property specialist

Chalk Lane Epsom KT18 7BS

A magnificent ground floor apartment forming part of the listed manor house 'Diston Mansion', which was built c1700 in central Epsom. Offered for sale with no chain.

'Diston Mansion' Apartment

Ground Floor

Oak Flooring

Original Sash Windows

Remote Controlled Blinds

Over 1,000 Square Feet

Underground Parking Bay

Secure Bike Store

Peppercorn Ground Rent

Long 997 Year Lease

The Woodcote Grove mansion, named 'Mount Diston', was built in the Dutch colonial style and was commissioned by Josiah Diston c1700. The Epsom-born businessman, who remained local until his death in 1737, sat in the House of Commons for the Whigs and was also a director of the Bank of England.





This exquisite apartment retains many original features including high ceilings, decorative cornicing, sash windows and large panelled internal doors. The apartment has been transformed into a spacious, light, triple aspect living space, with the bedroom and adjacent bathroom coming off of an internal hallway. The communal gardens can be accessed from the bedroom via a personal external stone staircase.

The high specification kitchen has been designed to offer a sleek finish with Miele and Siemens integrated appliances. The stunning bathroom offers a luxurious four piece suite.

All windows have been fitted with remote controlled blinds that allow natural daylight to flood the apartment whilst offering complete privacy.

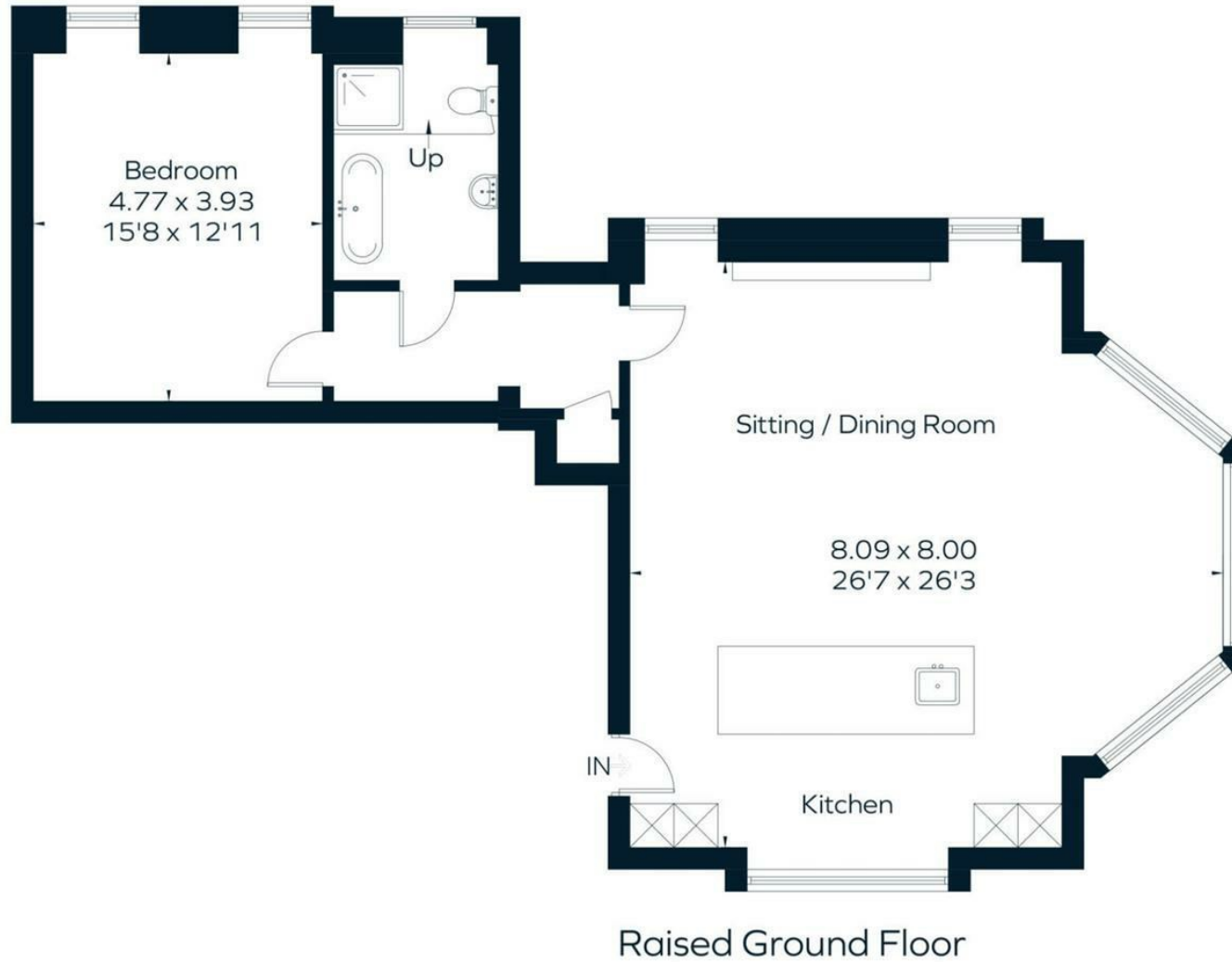
This one bedroom apartment is conveyed with an underground parking space and has further visitor parking and secure bike storage. The communal entrance hall is paved with vein marble with the grand staircase leading to the upper floor apartments.

Communal grounds and views over heathland ensure a tranquil location close to the convenience of Epsom Town Centre and Train Station.

Diston Mansions is offered for sale with a 997 year lease, peppercorn ground rent and the prospect of a share of the freehold in due course.



Approximate Area = 94.1 sq m / 1013 sq ft



Surveyed and drawn in accordance with the International Property Measurement Standards (IPMS 2: Residential)
fourwalls-group.com 316566

V&H Homes

01372 221 678

sales@vhhomes.co.uk

www.vhhomes.co.uk



Your local property specialist