



Floral Court
Ashtead



£360,000

Floral Court

Ashted

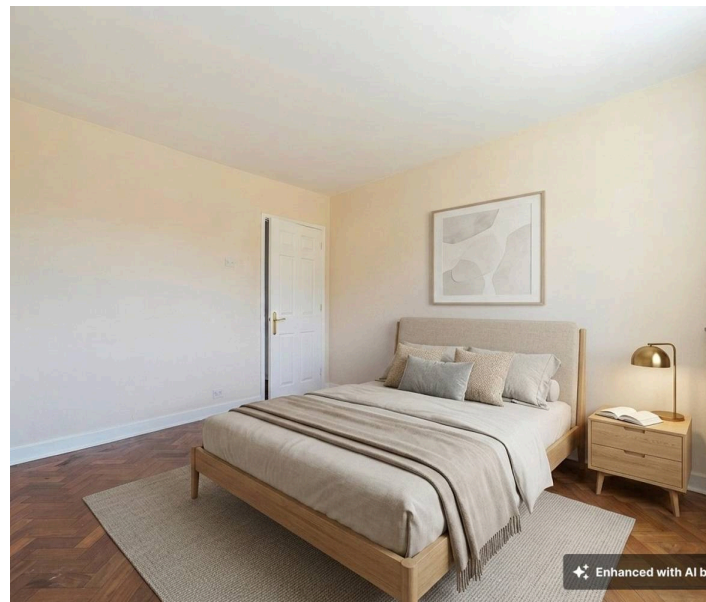
Council Tax band: D

Tenure: Share of Freehold

EPC Energy Efficiency Rating: C

EPC Environmental Impact Rating: D

- Ground Floor Apartment
- Two Double Bedrooms
- Open Plan Living/Dining Room
- Gas Central Heating
- Communal Gardens
- Residents Parking
- Garage





Set within the highly desirable Floral Court development in the heart of Ashted, this beautifully presented ground floor flat offers an excellent opportunity for first time buyers, downsizers, or investors alike. Benefitting from a share of freehold, the property combines spacious accommodation with the convenience of single level living in a peaceful yet well connected location.

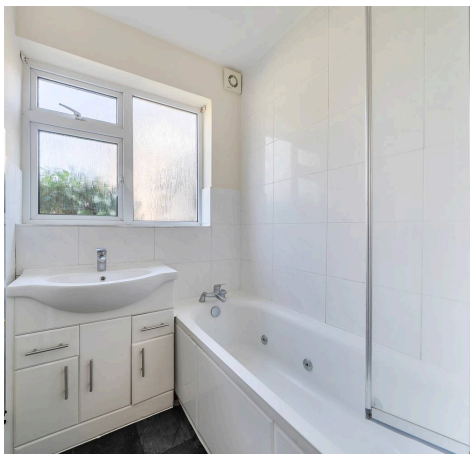
The apartment welcomes you with an inviting entrance hall leading through to a generously proportioned reception room, offering ample space for both relaxing and entertaining. Large windows allow plenty of natural light to flood the accommodation, creating a warm and airy feel throughout.

The kitchen is thoughtfully arranged with a range of fitted units and practical workspace, perfectly suited to modern day living. The bedroom accommodation is well proportioned and complemented by a well appointed bathroom finished with a white suite and a separate toilet.

Being positioned on the ground floor, the property enjoys easy accessibility along with attractive views over the well maintained communal surroundings. Floral Court is a quiet and popular development, ideally situated within easy reach of Ashted Village, local shops, cafés, and excellent transport links.

Offered with a share of freehold and located within one of Ashted's most sought after residential settings, this charming apartment presents an outstanding opportunity to enjoy village living at its finest.

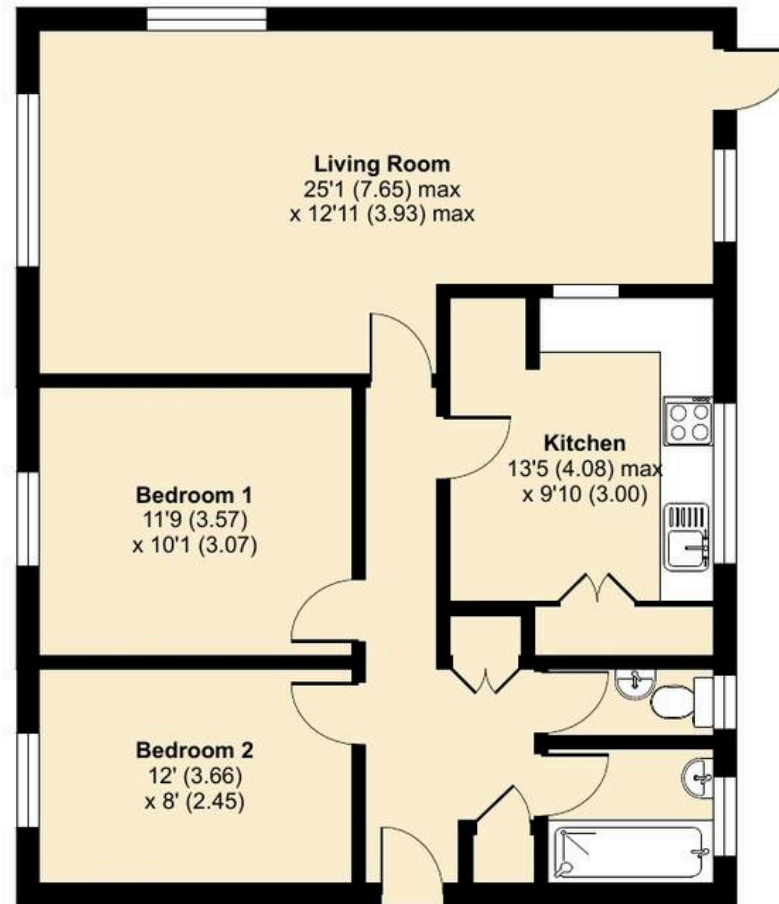
Please be aware the property has ben virtually staged



Floral Court, Ashted, KT21

Approximate Area = 801 sq ft / 74.4 sq m

For identification only - Not to scale



GROUND FLOOR



Floor plan produced in accordance with RICS Property Measurement 2nd Edition, Incorporating International Property Measurement Standards (IPMS2 Residential). © nichecom 2026. Produced for V&H Homes. REF: 1468257

