



Challenge Court, Leatherhead KT22 7UP

V&H
HOMES

Your local property specialist

Challenge Court Leatherhead KT22 7UP

A contemporary and spacious two bedroom, two bathroom, executive apartment with a southerly facing balcony and allocated parking.

Luxury Apartment

Two Bedrooms

Two Modern Bathrooms

Open Plan Living Dining Room

Contemporary Kitchen

Southerly Facing Balcony

Secured Gate Access

Parking Space

0.7 Miles to Station

High EPC Rating: B

This property is equidistant to both Ashted Village & Leatherhead Town centre with access to restaurants, shops and cafes. Challenge Court is just 0.7 miles to Leatherhead station which provides trains to London Waterloo and Victoria in approximately 45 minutes.





On entering the apartment, there is a generous entrance hall with a useful built in storage cupboard. The property offers a bright open plan and spacious living / dining room with doors opening out onto a private southerly facing balcony. In addition, there is a modern fitted kitchen equipped with an array of fitted cupboards and integrated appliances.

The master bedroom benefits from an en-suite bathroom. There is also a second bedroom and a second bathroom.

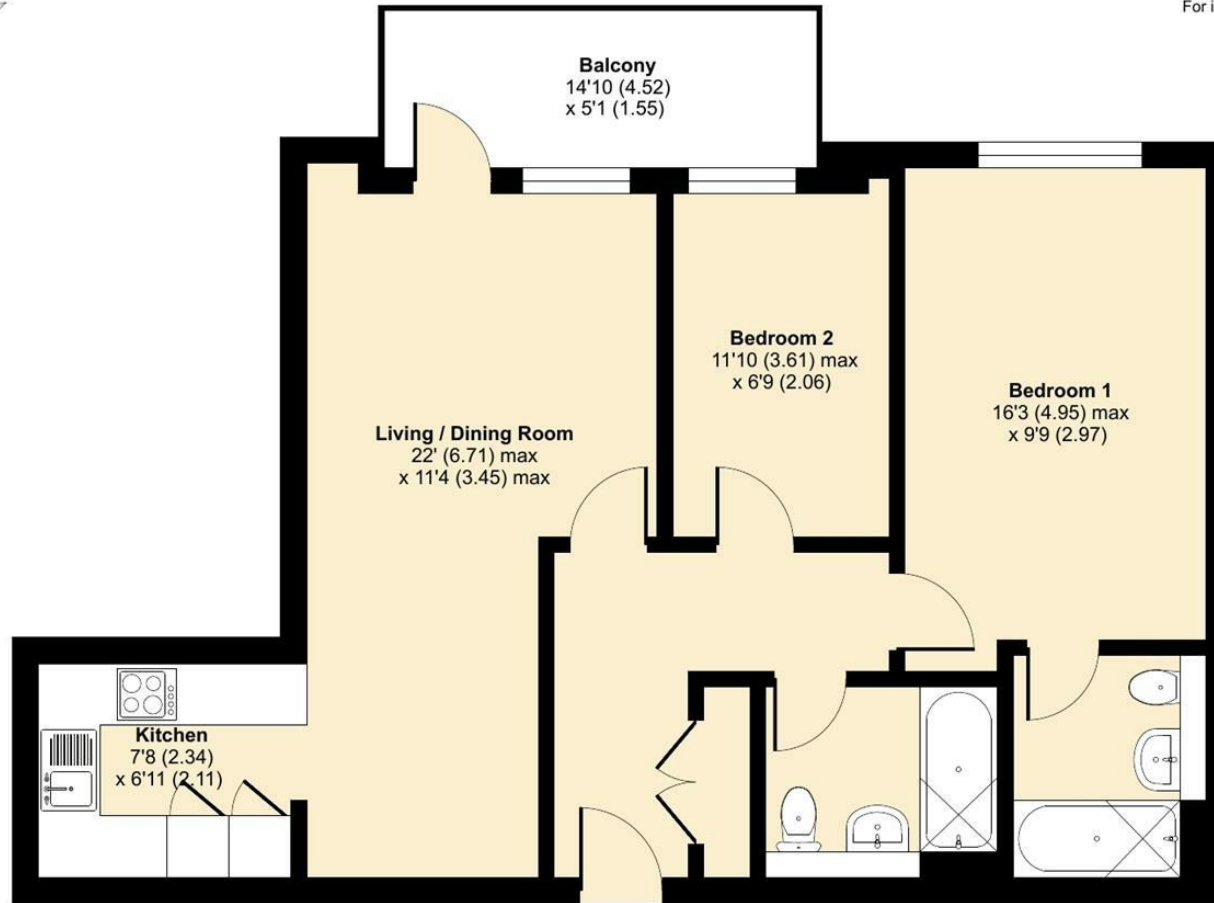
The apartment would be an excellent home or investment.



Challenge Court, Leatherhead, KT22

Approximate Area = 714 sq ft / 66.3 sq m

For identification only - Not to scale



SECOND FLOOR



Floor plan produced in accordance with RICS Property Measurement Standards incorporating International Property Measurement Standards (IPMS2 Residential). © nchecon 2023. Produced for V&H Homes. REF: 954095



V&H Homes

01372 221 678

sales@vhhomes.co.uk

www.vhhomes.co.uk



Your local property specialist