



Read Road, Ashted KT21 2HS

Your local property specialist



Read Road  
Ashted KT21 2HS

*This extended three-bedroom family home is perfectly positioned on a quiet road just moments from Ashted Station and Barnett Wood Infant School.*

Extended family home

Open plan kitchen/dining/family room

Downstairs WC

Spacious living room

Three generous bedrooms

Driveway parking

Home office

EPC Rating: D







At the heart of the home is a spacious open-plan kitchen/dining/family room, ideal for modern living, complemented by a separate living room and downstairs WC.

Upstairs, you'll find two double bedrooms, a large single, and a family bathroom.

Outside, the long garden leads to a versatile office outbuilding, perfect for home working. A private driveway provides off-street parking.

Located in a highly sought-after area close to schools, amenities, and transport links - this home is not to be missed.



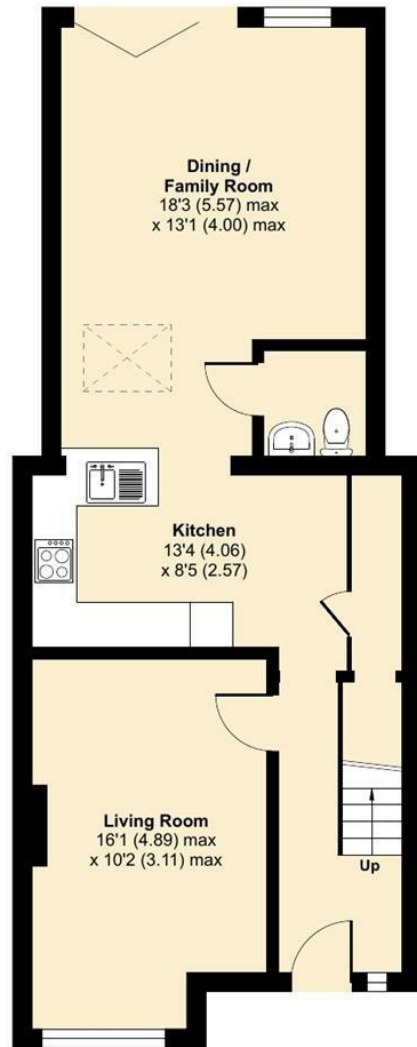
# Read Road, Ashted, KT21

Approximate Area = 983 sq ft / 91.3 sq m

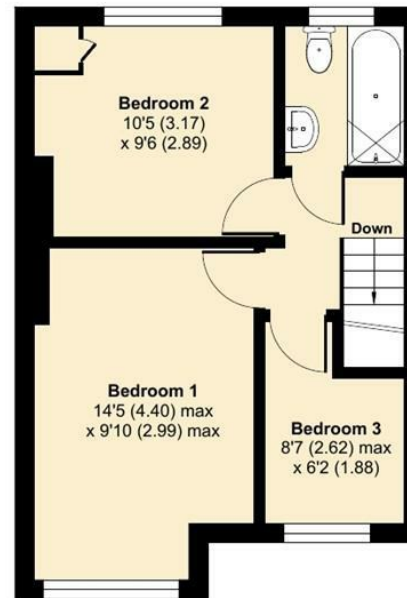
Outbuilding = 103 sq ft / 9.6 sq m

Total = 1086 sq ft / 100.9 sq m

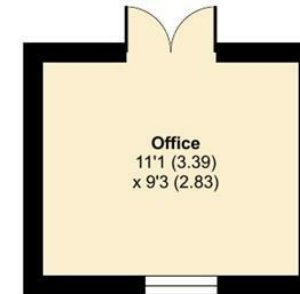
For identification only - Not to scale



GROUND FLOOR



FIRST FLOOR



OUTBUILDING



Floor plan produced in accordance with RICS Property Measurement 2nd Edition, Incorporating International Property Measurement Standards (IPMS2 Residential). © ntechcom 2025. Produced for V&H Homes. REF: 1240027



V&H Homes

01372 221 678

sales@vhomes.co.uk

www.vhomes.co.uk



Your local property specialist