



West Farm Avenue, Ashted KT21 2LG

**V&H**  
HOMES

Your local property specialist



## West Farm Avenue Ashted KT21 2LG

*This substantial and attractive four double bedroom detached home is located on a highly sought after and leafy residential road in Lower Ashted. This spacious and bright house has been well cared for and offers excellent potential to extend (STPP). Offered to the market with no onward chain.*

Detached Family House

Four Double Bedrooms

Two Reception Rooms and Conservatory

Downstairs Cloakroom

Large South West Facing Mature Garden

Garage and Off Street Parking

Sought After Lower Ashted Road

No Onward Chain

Potential to Extend (STPP)

EPC Rating E







On entering the house via a welcoming entrance hall, there are two generous reception rooms. The living room has doors to a south west facing conservatory with views out to the garden. The dining room also has French doors out to the garden. The kitchen benefits from a range of built in appliances, and excellent storage. The ground floor of this large detached home also provides a useful porch off the kitchen, and a cloakroom / WC.

To the first floor, the landing leads to four spacious and bright double bedrooms, and a family bathroom with a walk in shower.

Externally, this attractive house benefits from a garage and driveway parking for two cars. The expansive and private rear garden is mainly laid to lawn and surrounded by mature hedging and trees.

This lovely home has been well cared for and offers the opportunity to extend (STPP).



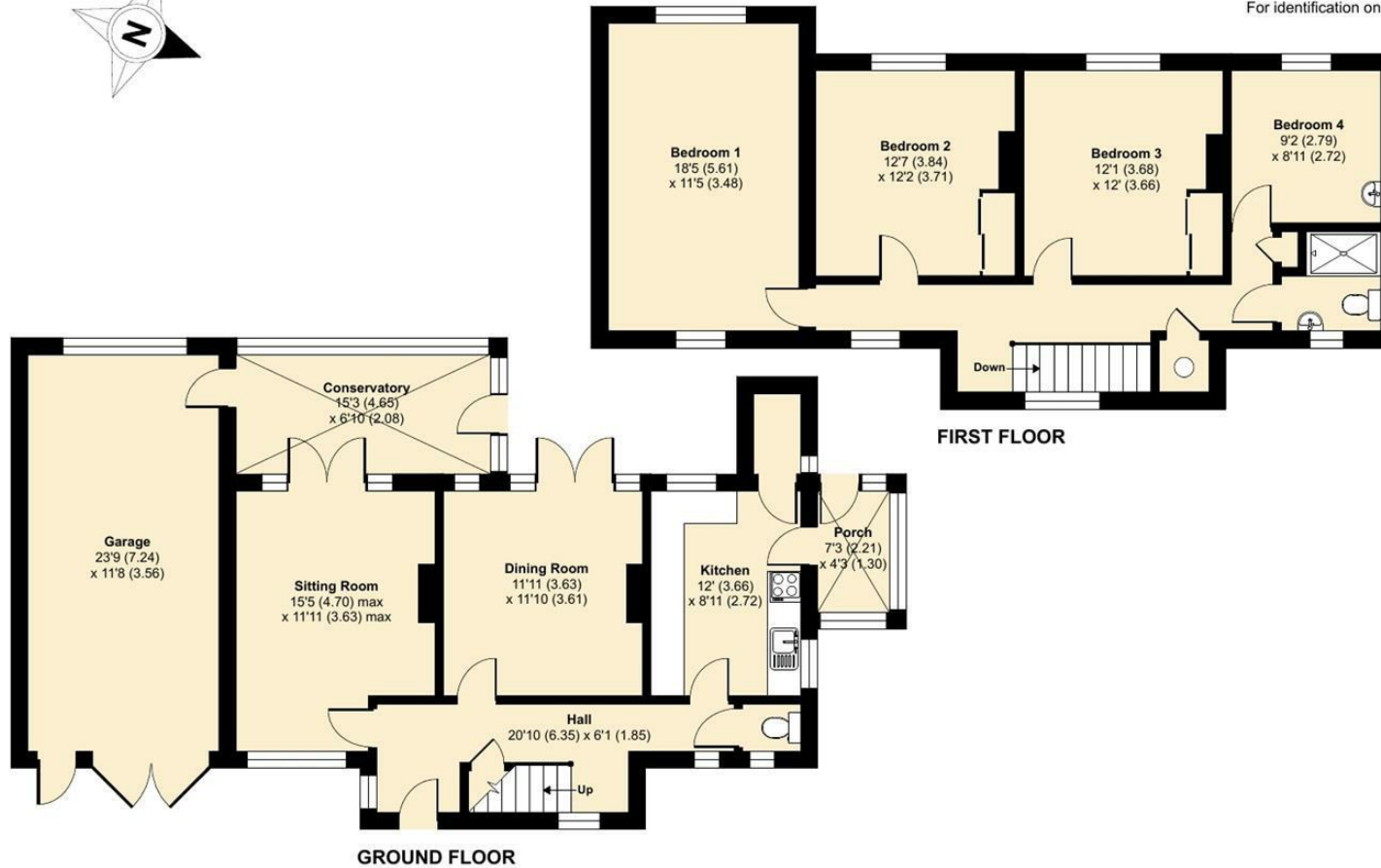
# West Farm Avenue, Ashted, KT21

Approximate Area = 1585 sq ft / 147.2 sq m

Garage = 274 sq ft / 25.5 sq m

Total = 1859 sq ft / 172.7 sq m

For identification only - Not to scale



Floor plan produced in accordance with RICS Property Measurement 2nd Edition, incorporating International Property Measurement Standards (IPMS2 Residential). © ntechcom 2024. Produced for V&H Homes. REF: 1217871



**V&H Homes**

01372 221 678

[sales@vhhomes.co.uk](mailto:sales@vhhomes.co.uk)

[www.vhhomes.co.uk](http://www.vhhomes.co.uk)



Your local property specialist