



Richmond Way, Fetcham

V&H
&
HOMES

Richmond Way

Fetcham, Leatherhead

Council Tax band: F

Tenure: Freehold

EPC Energy Efficiency Rating: C

EPC Environmental Impact Rating:

- Detached Family Home
- Five Bedrooms
- Three Reception Rooms
- Two Bathrooms
- Utility Room
- South West Facing Garden
- Off Street Parking
- Garage

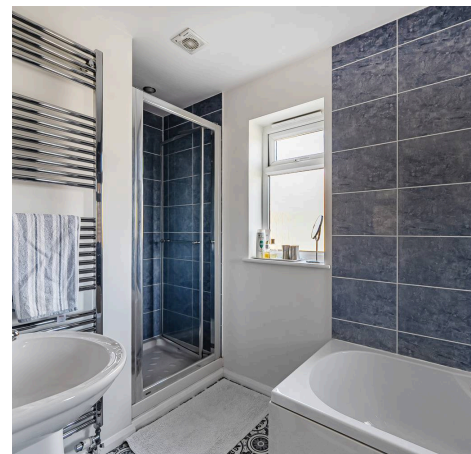




This impressive detached family home offers a wealth of space and versatile accommodation, making it an ideal choice for growing families or those seeking ample room for entertaining and relaxation.

The property features five generously sized bedrooms, providing flexible options for family members, guests, or home office use. The ground floor boasts three well-proportioned reception rooms, each designed to cater to a variety of lifestyles, whether you are hosting formal gatherings, enjoying casual family time, or setting up a dedicated playroom or study. The modern kitchen is complemented by a practical utility room, offering convenient additional workspace and storage. Two bathrooms serve the household, ensuring comfort and functionality for busy mornings and evening routines.

The home benefits from off street parking and a garage, providing secure storage and easy access for vehicles or outdoor equipment. Thoughtfully designed to maximise natural light and flow, this property combines comfort with practicality in a sought-after location. With its blend of spacious interiors and versatile layout, this detached house presents a superb opportunity for buyers looking to settle in a well-appointed and welcoming environment.



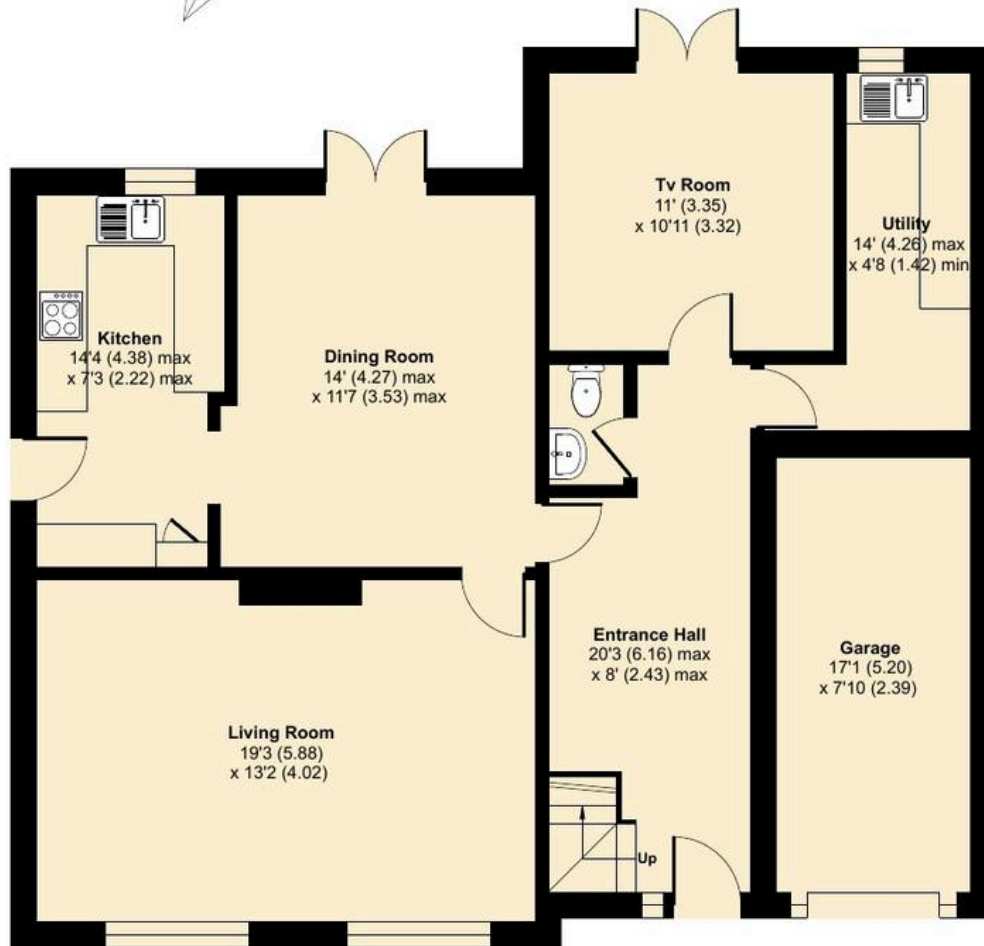
Richmond Way, Fetcham, Leatherhead, KT22

Approximate Area = 1733 sq ft / 161 sq m

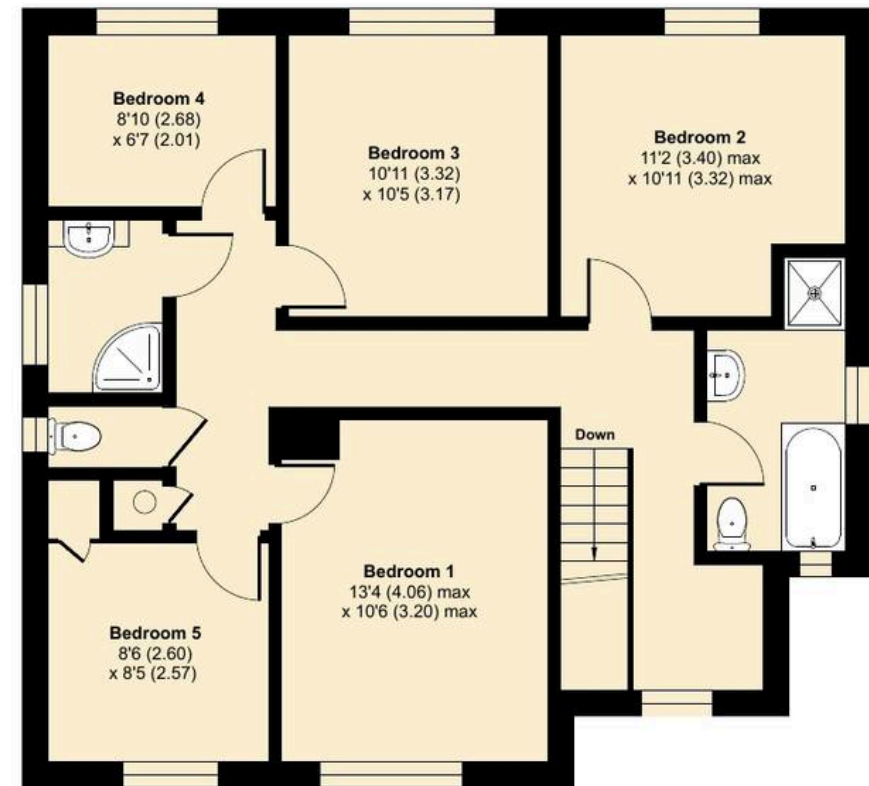
Garage = 126 sq ft / 11.7 sq m

Total = 1859 sq ft / 172.7 sq m

For identification only - Not to scale



GROUND FLOOR



FIRST FLOOR



Floor plan produced in accordance with RICS Property Measurement 2nd Edition, Incorporating International Property Measurement Standards (IPMS2 Residential). © nichecom 2026. Produced for V&H Homes. REF: 1480510

V&H
HOMES