



Ewell By Pass, Epsom KT17 2PP

V&H  
HOMES

Your local property specialist



## Ewell By Pass Epsom KT17 2PP

*In a great location, just set back from Ewell By Pass, in Epsom, this charming first-floor maisonette offers a delightful blend of comfort and modern living. Spanning an impressive 721 square feet, the property boasts two generously sized bedrooms, perfect for relaxation or accommodating guests. The spacious reception room provides an inviting space for entertaining or unwinding after a long day.*

*One of the standout features of this home is the brand new fitted kitchen with breakfast bar, which is both stylish and functional, making it a joy to cook and entertain. The property also includes a well-appointed bathroom, ensuring all your needs are met with ease.*

Stunning First Floor Maisonette

2 Large Double Bedrooms

Spacious Garden with Decking and BBQ Area

Brand New Kitchen with Breakfast Bar

Convenient Location

Long Lease over 950 Years

Large White Family Bathroom

Exceptionally Well Presented

Great Investment / First Time Buy

EPC Rating: D

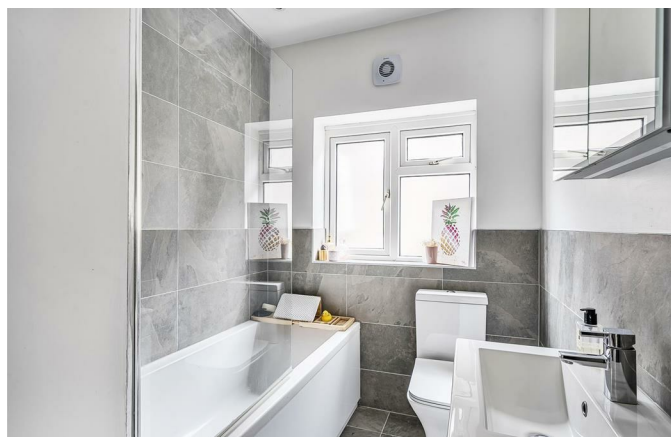
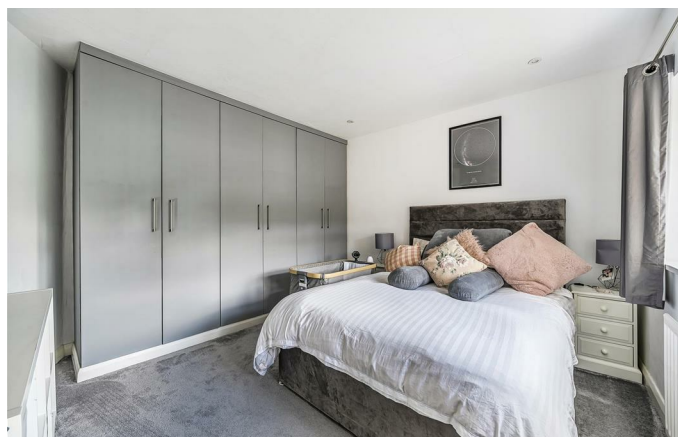






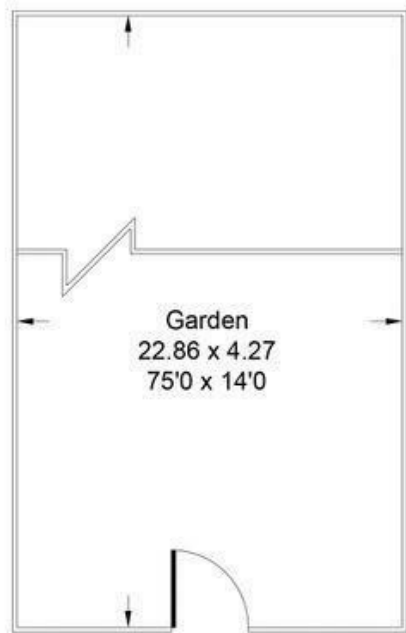
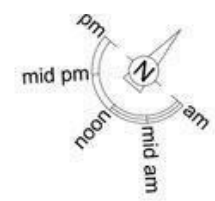
Step outside to discover a lovely garden that features both patio and decking areas, ideal for enjoying the outdoors, whether it be for a morning coffee or an evening gathering with friends. The low service charge adds to the appeal, making this property not only a comfortable home but also a sensible investment.

Built in the late 1920s, this maisonette combines period charm with modern amenities, making it a perfect choice for first-time buyers or those looking to downsize. Don't miss the opportunity to make this delightful property.



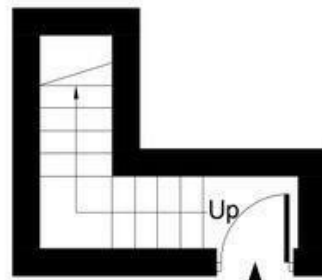
# Ewell By Pass, KT17

Approximate Gross Internal Area  
70.5 sq m / 759 sq ft

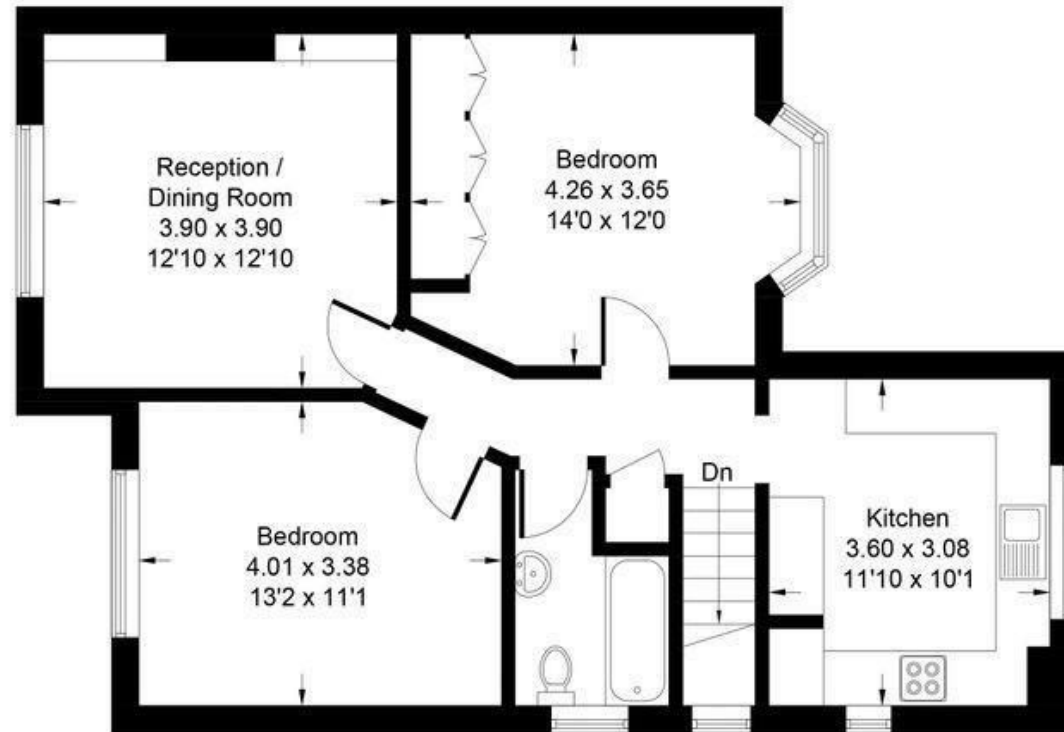


Garden  
22.86 x 4.27  
75'0 x 14'0

(Not Shown In Actual  
Location / Orientation)



Ground Floor



First Floor

V&H Homes

01372 221 678

[sales@vhhomes.co.uk](mailto:sales@vhhomes.co.uk)

[www.vhhomes.co.uk](http://www.vhhomes.co.uk)

rightmove

Zoopla

PrimeLocation.com



hometrack

V&H  
HOMES

Your local property specialist