



Ashworth House, Ashted KT21 2AD

V&H
HOMES

Your local property specialist

Ashworth House, Ashtead KT21 2AD

A luxury and contemporary apartment offering a high specification open plan living space and a bright double bedroom. Located on the first floor of a highly sought after development in Ashtead Village.

Contemporary One Bedroom Apartment

Open Plan Lounge/Kitchen/Dining Area

Fully Integrated Kitchen

Video Entry System

Gated Secure Allocated Parking

Modern Bathroom

Bike Store

0.7 Miles To Ashtead Station

Council Tax Band: C

EPC Rating: C

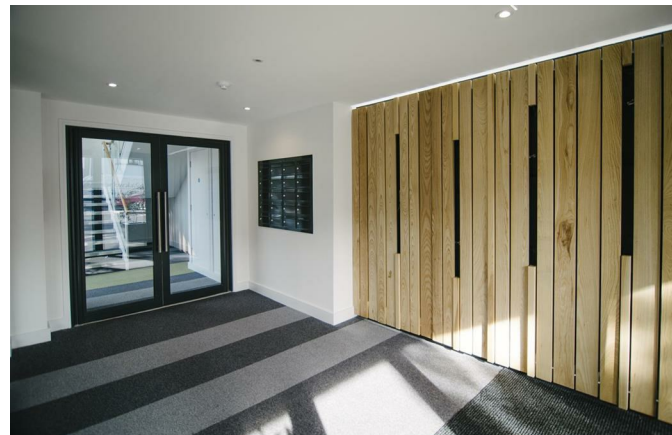




On entering the apartment, there is a bright lounge / dining room which is open plan to the kitchen. The contemporary kitchen is equipped with a range of integrated appliances including a fridge / freezer, washing machine and dishwasher. In addition, there is a double bedroom with large fitted wardrobes and a luxurious modern shower room.

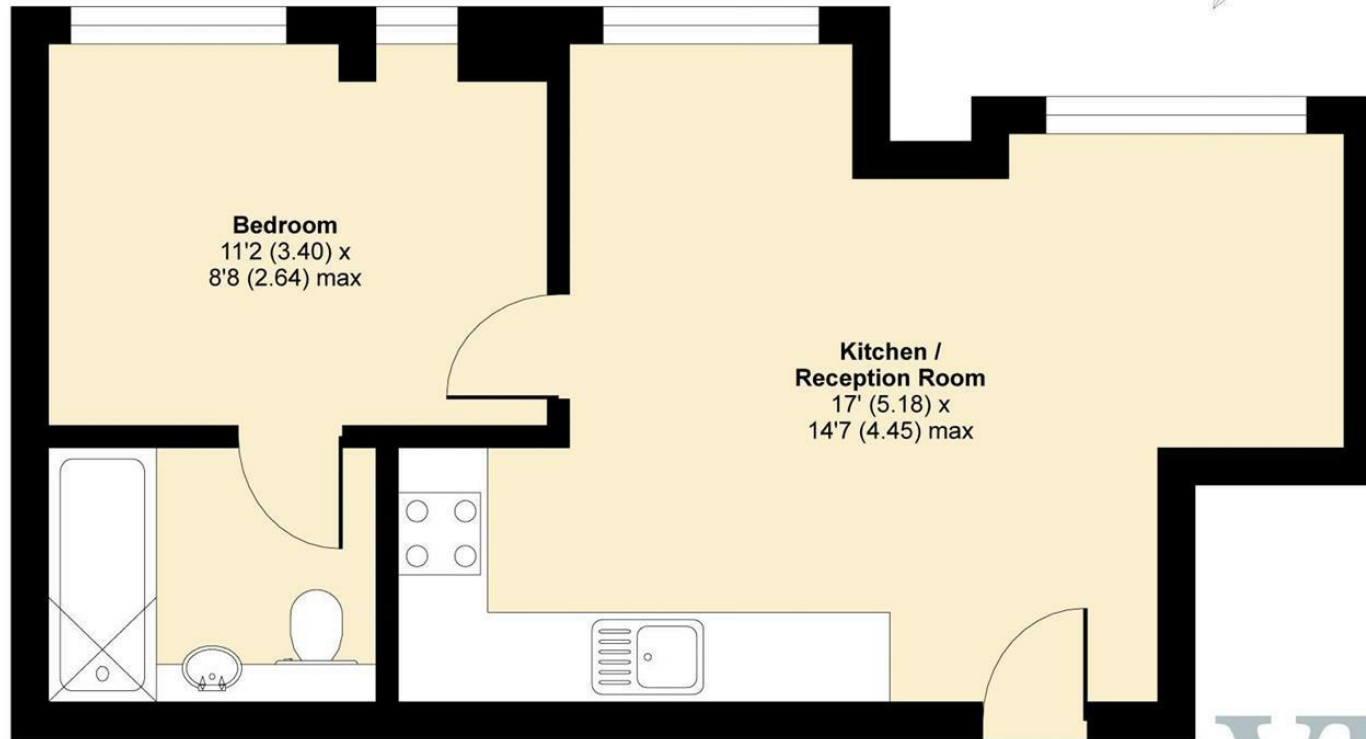
This apartment includes low energy lighting throughout, a secure video entry system, a passenger lift to all floors and allocated secure parking accessed via a gated entrance.

Situated in the very heart of Ashted Village with its selection of independent shops & restaurants and just 0.7 miles from Ashted Station, which offers trains to Waterloo and Victoria in approximately 40 minutes.



The Street, Ashted, KT21

APPROX. GROSS INTERNAL FLOOR AREA 371 SQ FT 34.4 SQ METRES



FIRST FLOOR

V&H
& HOMES

Whilst every attempt has been made to ensure the accuracy of the floor plan contained here, measurements of doors, windows and rooms are approximate and no responsibility is taken for any error, omission or misstatement. These plans are for representation purposes only as defined by RICS Code of Measuring Practice and should be used as such by any prospective purchaser. Specifically no guarantee is given on the total square footage of the property if quoted on this plan. Any figure given is for initial guidance only and should not be relied on as a basis of valuation.

Copyright nichecom.co.uk 2016 Produced for V&H Homes REF : 151381

V&H Homes

01372 221 678

sales@vhhomes.co.uk

www.vhhomes.co.uk

rightmove 

Zoopla

 PrimeLocation.com

 The Property Ombudsman


hometrack

V&H
& HOMES

Your local property specialist