



Highbury Drive, Leatherhead KT22 7UT

**V&H**  
HOMES

Your local property specialist

V&H HOMES



Highbury Drive  
Leatherhead KT22 7UT

First Floor Apartment

Two Bedrooms

Two Bathrooms

Open plan Kitchen/Reception

Balcony

Underground allocated parking space

Available Unfurnished

EPC Rating: C

Council Tax Band D

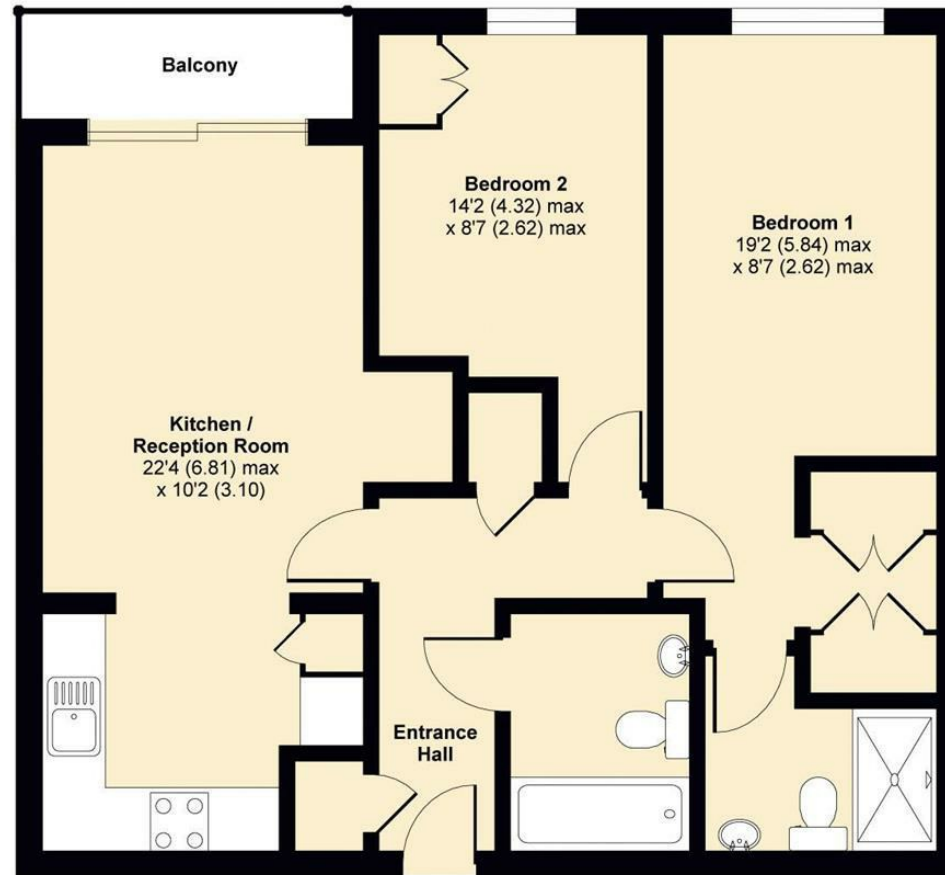






# Highbury Drive, Leatherhead, KT22

APPROX. GROSS INTERNAL FLOOR AREA 694 SQ FT 64.5 SQ METRES



**SECOND FLOOR**



**V&H**  
HOMES

Whilst every attempt has been made to ensure the accuracy of the floor plan contained here, measurements of doors, windows and rooms are approximate and no responsibility is taken for any error, omission or misstatement. These plans are for representation purposes only as defined by RICS Code of Measuring Practice and should be used as such by any prospective purchaser. Specifically no guarantee is given on the total square footage of the property if quoted on this plan. Any figure given is for initial guidance only and should not be relied on as a basis of valuation.

Copyright nichecom.co.uk 2017 Produced for V&H Homes REF : 181376

**V&H Homes**

01372 221 678

[sales@vhhomes.co.uk](mailto:sales@vhhomes.co.uk)

[www.vhhomes.co.uk](http://www.vhhomes.co.uk)

**rightmove**

**Zoopla**

**PrimeLocation.com**

**The Property Ombudsman**

**hometrack**

**V&H**  
HOMES

Your local property specialist