



Upper High Street, Epsom KT17 4QR

**V&H**  
HOMES

Your local property specialist

V&H HOMES



## Upper High Street Epsom KT17 4QR

*A spacious and well presented two double bedroom apartment located in the heart of Epsom Town Centre and just 500m from Epsom train station. Offered to the market with no onward chain, the apartment is conveyed with an allocated parking space and direct access to the communal terrace.*

Two Double Bedroom Apartment

Allocated Parking

En-Suite Shower Room

Direct Access to Patio

Excellent Investment or Home

500m from Train Station

Heart of Epsom

EPC Rating: C

Located in the heart of Epsom town centre and just 500 metres from Epsom train station.





This spacious apartment has a large lounge with a patio door opening directly out onto the communal Japanese inspired SW facing garden. The property benefits from two double bedrooms, an en suite shower room and a family bathroom. The kitchen has a range of cupboards and work surfaces and space for appliances.

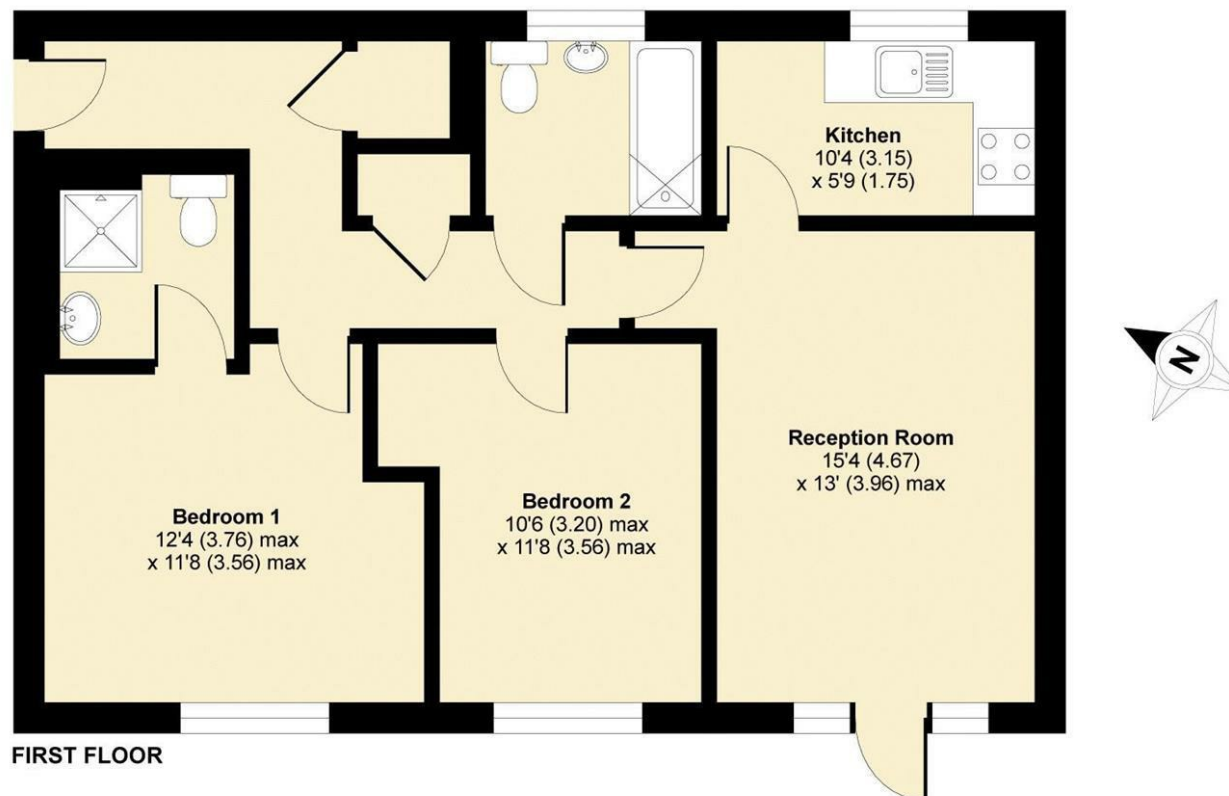
Further features include wood flooring, an entry phone system and allocated parking.

Located in the centre of Epsom within walking distance of the train station with direct lines to London Bridge, Victoria and Waterloo, and close to nurseries and schools, the University of the Arts, Laine's Theatre of Arts, and Alexandra Park.



## Maple Gardens, Upper High Street, Epsom, KT17

APPROX. GROSS INTERNAL FLOOR AREA 688 SQ FT 63.9 SQ METRES



Whilst every attempt has been made to ensure the accuracy of the floor plan contained here, measurements of doors, windows and rooms are approximate and no responsibility is taken for any error, omission or misstatement. These plans are for representation purposes only as defined by RICS Code of Measuring Practice and should be used as such by any prospective purchaser. Specifically no guarantee is given on the total square footage of the property if quoted on this plan. Any figure given is for initial guidance only and should not be relied on as a basis of valuation.

Copyright nichecom.co.uk 2016 Produced for V&H Homes REF : 98560

### V&H Homes

01372 221 678

[sales@vhhomes.co.uk](mailto:sales@vhhomes.co.uk)

[www.vhhomes.co.uk](http://www.vhhomes.co.uk)

rightmove

Zoopla

PrimeLocation.com

The Property  
Ombudsman

hometrack

V&H  
HOMES

Your local property specialist