



Cobham Road, Fetcham KT22 9JS

**V&H**  
HOMES

Your local property specialist



## Cobham Road Fetcham KT22 9JS

*A 1930's three bedroom semi-detached home which sits on a plot that is approximately 200 ft long. The house would benefit from modernisation and provides excellent potential to extend (STPP). Located in a popular Fetcham Village road close to amenities.*

1930's House

200 ft Plot (Approx.)

Three Bedrooms

Driveway Parking

Requiring Modernisation

Semi-detached

Potential to Extend (STPP)

No Onward Chain

Set in the very heart of Fetcham Village, within walking distance of the local shops and amenities. The house is also well located for the outstanding local schools.







The ground floor accommodation comprises of an entrance hall leading to an open plan dual aspect living / dining room with charming bay window and garden access. There is a kitchen that also provides external access and an outside WC.

Stairs from the hallway lead to the first floor landing, off which are two spacious double bedrooms, a single bedroom and a family bathroom.

Externally, the house sits on a large 200 ft plot. To the front is driveway parking and a mature front lawn. To the rear the garden is mainly laid to lawn.

The house benefits from the potential to extend to both the side and rear.

Offered to the market with no onward chain.



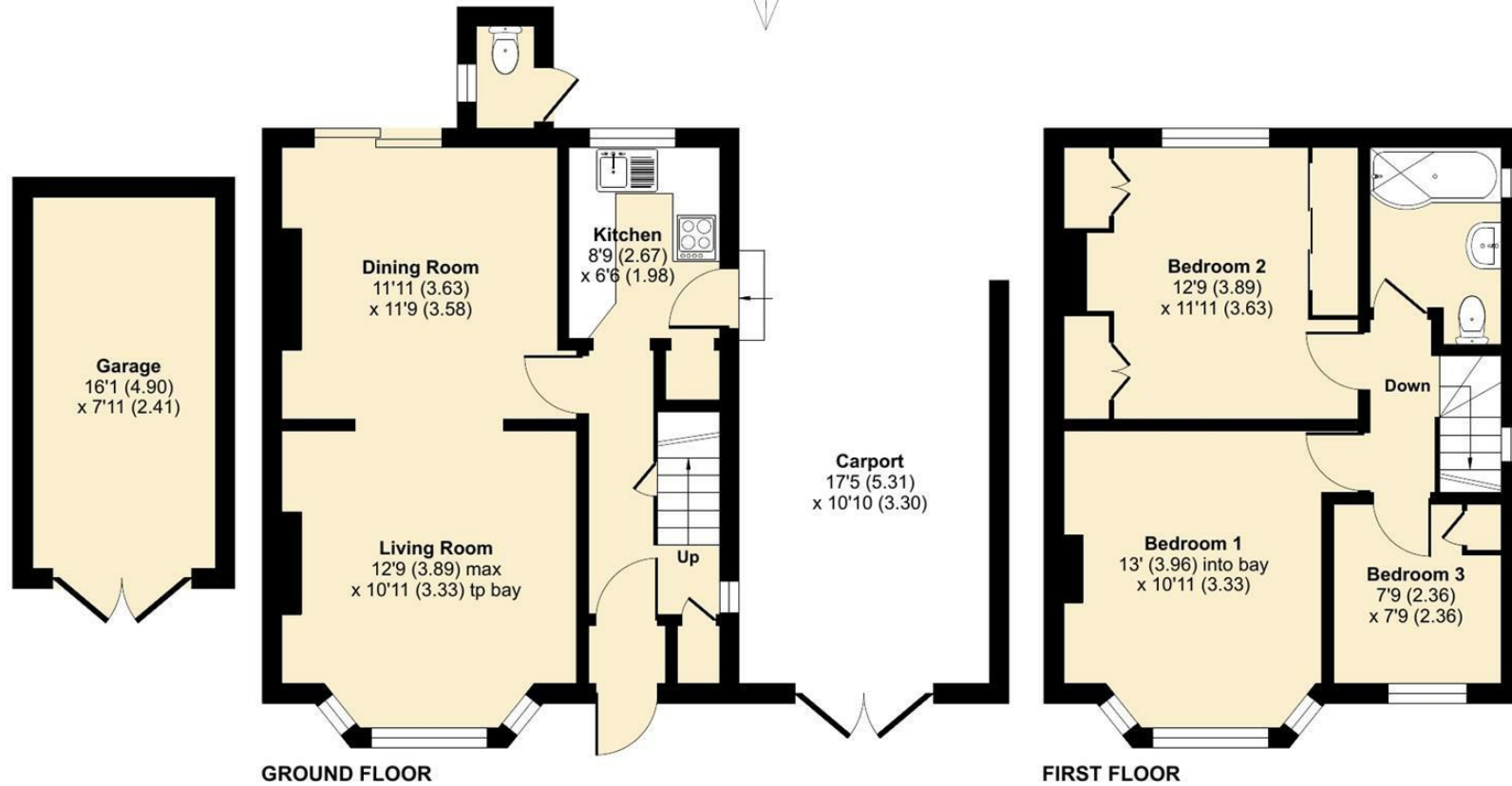
# Fetcham, Leatherhead, KT22

Approximate Area = 1033 sq ft / 96 sq m (includes garage & excludes carport)

Outbuilding = 11 sq ft / 1 sq m

Total = 1044 sq ft / 97 sq m

For identification only - Not to scale



Floor plan produced in accordance with RICS Property Measurement Standards incorporating International Property Measurement Standards (IPMS2 Residential). © nchecon 2022. Produced for V&H Homes. REF: 856892.



**V&H Homes**

01372 221 678

sales@vhomes.co.uk

www.vhomes.co.uk



Your local property specialist