



Epsom Road, Leatherhead KT22 8TB

V&H
HOMES

Your local property specialist

Epsom Road Leatherhead KT22 8TB

This outstanding two double bedroom luxury ground floor apartment is located in central Leatherhead, close to the shops and restaurants, and just 0.7 miles from the station. The property boasts two bathrooms and secure underground parking for two cars.

Luxury Ground Floor Apartment

Spacious & Bright Accommodation

Two Double Bedrooms

Two Bathrooms

Secure Underground Parking for Two Cars

Communal Gardens

Long Lease

Close to Station & Town

No Onward Chain

High EPC Rating: C

This excellent home is located just 0.7 miles from Leatherhead station which provides trains to London Waterloo and Victoria in approximately 40 minutes.





On entering the apartment there is a generous hallway with useful storage space. The substantial double aspect living / dining room benefits from a feature fireplace and the kitchen is well presented and offers ample unit space and integrated appliances.

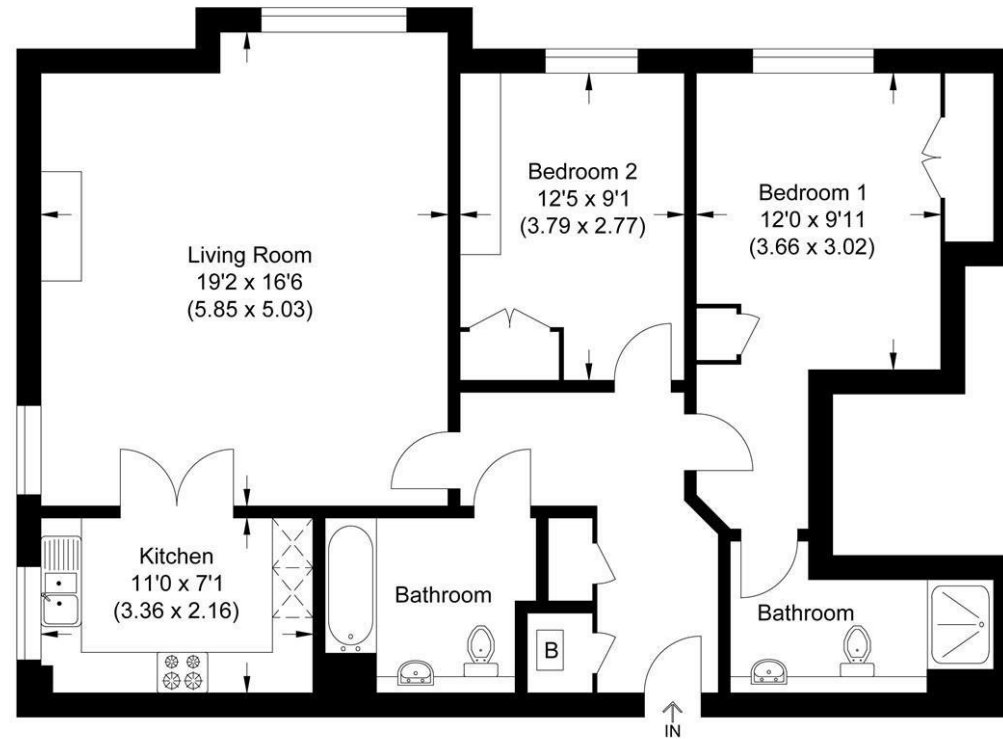
This lovely and well located home also offers two double bedrooms, both providing built in storage, and the master benefiting from an en suite shower room. There is also a separate family bathroom.

Further features include two secure underground parking spaces, a long lease and charming communal gardens.

Viewings of this superb property, which would make an excellent home or investment, are strongly recommended.



Approximate Gross Internal Area
84.55 sq m / 910.08 sq ft



Ground Floor

Illustration for identification purposes only, measurements are approximate, not to scale.

V&H Homes

01372 221 678

sales@vhhomes.co.uk

www.vhhomes.co.uk



Your local property specialist