



Barnett Wood Lane, Ashted KT21 2LR

**V&H**  
HOMES

Your local property specialist

Barnett Wood Lane  
Ashted KT21 2LR

*A bright and spacious first-floor  
conversion apartment, set within a  
handsome period property just 0.7 miles  
from Ashted Station.*

Two Double Bedrooms

High Ceilings, Period Charm

Spacious Living Accommodation

Double Glazing Throughout

Allocated Parking

Large Communal Gardens

Shared Garage for Storage

153 Years on Lease

Just 0.7 Miles To Station

EPC Rating: C





Offering high ceilings and character features throughout, this charming home includes two double bedrooms, a generous living room, and a well-appointed kitchen with ample storage and a breakfast bar.

Double-glazed throughout and well presented, the property also benefits from beautifully maintained communal gardens, access to a shared garage for storage, and one allocated parking space.

Further details:

153 years remaining on the lease

£150 per calendar month service charge

£120 per annum ground rent

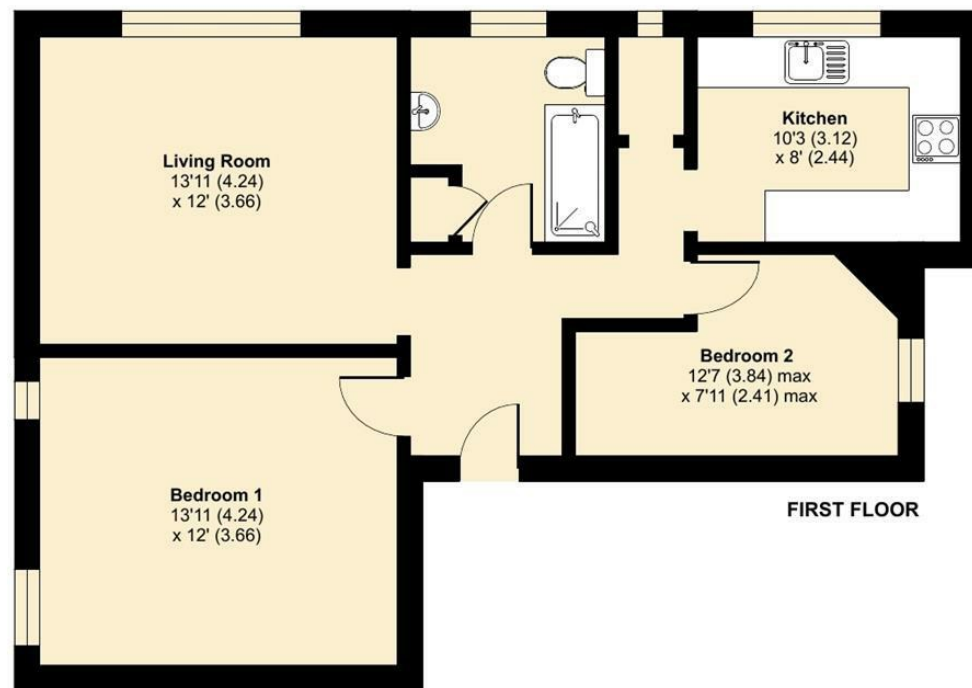




# Barnett Wood Lane, Ashted, KT21

Approximate Area = 678 sq ft / 62.9 sq m

For identification only - Not to scale



Floor plan produced in accordance with RICS Property Measurement 2nd Edition, Incorporating International Property Measurement Standards (IPMS2 Residential). © nchecom 2024. Produced for V&H Homes. REF: 1289217

## V&H Homes

01372 221 678

[sales@vhhomes.co.uk](mailto:sales@vhhomes.co.uk)

[www.vhhomes.co.uk](http://www.vhhomes.co.uk)

rightmove

Zoopla

PrimeLocation.com



hometrack

V&H  
HOMES

Your local property specialist